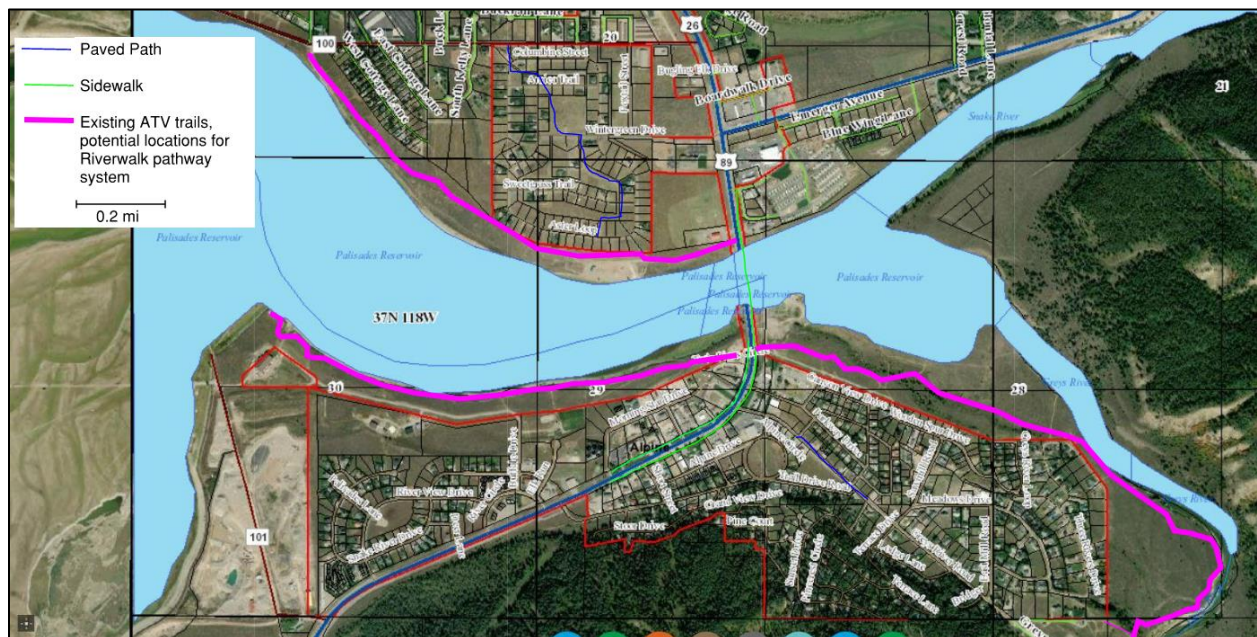


The Alpine River Walk Project

The Palisades Reservoir is an Alpine attraction and key recreational resource. There are very few existing pathways in or near Town of Alpine, and most recreation is motorized. This project is proposing to capitalize on the natural beauty by providing a pedestrian and bicycle facility adjacent to the Reservoir. This would provide stunning vistas along a natural attraction and be accessible for all age groups and mobility levels with the generally flat terrain. The proposed pathway will improve and enhance Town of Alpine livability, provide safe transportation options for pedestrians and bicyclists, and improve connectivity.

This project will include approximately 4.75 miles of dedicated pathways for bike and pedestrian use and a separate trail for motorized ATVs. Along the north side of the Palisades Reservoir, the path will extend along the reservoir between County Road 100 and Highway 89. On the south side of the reservoir and from west to east, the path will generally run from the location of Melvin Brewery along the south side of the Palisade Reservoir, cross at Highway 89, continue to the southeast adjacent to Wooden Spur Drive and connect to the new pathway on Greys River Road. This project was identified as part of the 2019 Town of Alpine, Wyoming Transportation Alternatives Plan and 2006 Lincoln County Office of Planning and Development Comprehensive Plan, Appendix 7 Star Valley Trails and Open Space Plan.



The goal of this project funding is to conduct an environmental review, project planning, site survey and complete engineering design for the Alpine River Palk Project. Due to the location of the proposed pathway, coordination with the Town of Alpine, US Bureau of Reclamation, Game and Fish, and US Forest Service will be critical. The estimated cost for the planning and design is as follows:

The Alpine River Walk Project – Estimated Planning & Design

Description	Cost Estimate
Feasibility Study. Complete topographic survey, environmental assessment, geotechnical investigation, develop conceptual alternatives, coordinate with agencies, public involvement, identify needs and wants for project (such as sitting and picnic areas, look outs, lighting) present to Town and County, develop feasibility report .	\$150,000
Preliminary design – 30% level of completeness	\$80,000
Design – 75% level of completeness	\$100,000
Environmental regulatory compliance, easements, agency agreements, and permitting.	\$75,000
100% Plan Set and Construction Documents	\$65,000
Contingency (~10%)	\$30,000
TOTAL	\$500,000