

1 PHOTOMETRIC PLAN
SCALE:

SITE PLAN

- | # | Description |
|----|---|
| 1. | Illuminated channel letters on ACM panels see page 3 |
| 2. | Illuminated channel letters on ACM panels see page 3 |
| 3. | Illuminated channel letters on ACM support see page 4 |

Project ID
MC5-63173A

Parkland Corporation 80229
15 Boardwalk Drive
Alpine, WY

Sign Item

Date: 10-29-2024
Scale: NTS
Contact: E. Collin
Designer: T. Albert

Revision Note

- Xx
-

Information Required
for Production

- Xx
-

Customer Approval

Signature

MM/DD/YYYY

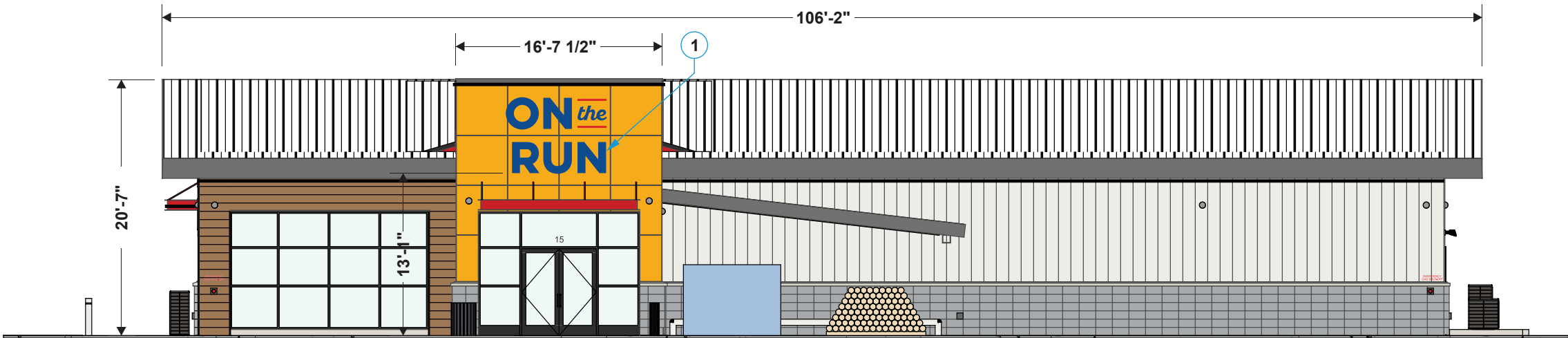
All rights reserved. The artwork depicted herein are copyrighted and are the exclusive property of Pattison ID and as such cannot be reproduced and/or distributed, in whole or in part, without written permission of Pattison ID.

It is the Customer's responsibility to ensure that the sign installation location is suitable to accept and support the installation of the signs being ordered. Notify Pattison ID immediately if further details are required.

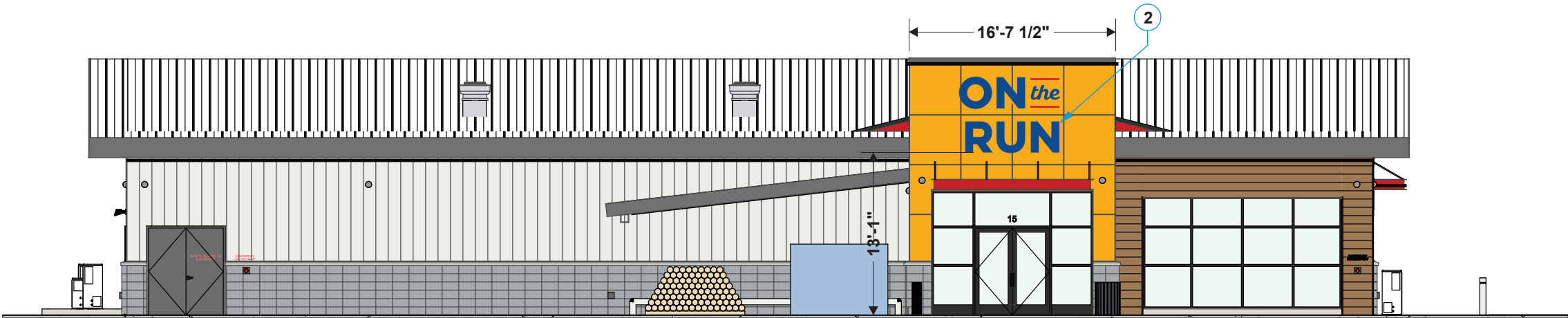
Pattison



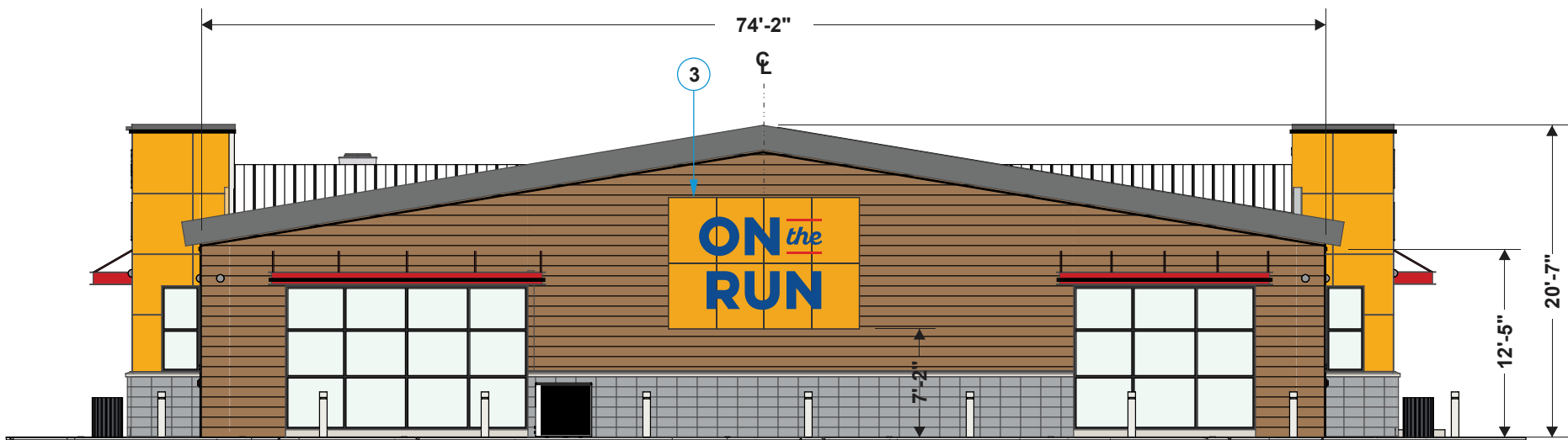
1.866.635.1110
pattisonid.com



EAST ELEVATION



WEST ELEVATION



SOUTH ELEVATION

ELEVATIONS

#	Description
1.	Illuminated channel letters on ACM panels see page 3
2.	Illuminated channel letters on ACM panels see page 3
3.	Illuminated channel letters on ACM support see page 4

Project ID
MC5-63173A

Parkland Corporation 80229
15 Boardwalk Drive
Alpine, WY

Sign Item

Date: 10-29-2024
Scale: 3/32"=1'-0"
Contact: E. Collin
Designer: T. Albert

Revision Note

RV2: TA - 11.07.2024
Enlever la feuille d'érable

Information Required
for Production

- Xx
-

Customer Approval

Signature

MM/DD/YYYY

All rights reserved. The artwork depicted herein are copyrighted and are the exclusive property of Pattison ID and as such cannot be reproduced and/or distributed, in whole or in part, without written permission of Pattison ID.

It is the Customer's responsibility to ensure that the sign installation location is suitable to accept and support the installation of the signs being ordered. Notify Pattison ID immediately if further details are required.



1.866.635.1110
pattisonid.com

NOTE: TECHNICAL SURVEY HAS NOT BEEN PERFORMED. DIMENSIONS MUST BE VERIFIED PRIOR TO PRODUCTION.



FRONT VIEW
SCALE: 1/2" = 1'-0"
61.16 sq. ft. / 5.68 m²



NIGHT VIEW

OTR - OPTION 1A

ILLUMINATED CHANNEL LETTERS

(VERTICAL)

#

Description

1.

3/16" white acrylic face with vinyl applied to first surface

2.

0.040" tk. coil painted aluminium siding (pre-painted white inside) & ACM backing

3.

Trim

*

Internal illumination by LED's

4.

Architectural Yellow ACM panels by Pattison

Colors:

A

Digitally printed on 3635-210 white perforated vinyl to match 3630-37 blue vinyl with overlaminate application (8520 mat)

B

Red vinyl #3630-143

C

Painted to match blue vinyl 3630-37

D

Painted to match red vinyl 3630-143

Light output per sign 539 lumens

Project ID

MC5-63173A

Parkland Corporation 80229

15 Boardwalk Drive

Alpine, WY

Sign Item

SG1

Date:

10-29-2024

Scale:

1/2"=1'-0"

Contact:

E. Collin

Designer:

T. Albert

Revision Note

RV2: TA - 11.07.2024

Enlever la feuille d'érable

Information Required for Production

- Survey required to confirm ACM panel size

Customer Approval

Signature

MM/DD/YYYY

All rights reserved. The artwork depicted herein are copyrighted and are the exclusive property of Pattison ID and as such cannot be reproduced and/or distributed, in whole or in part, without written permission of Pattison ID.

It is the Customer's responsibility to ensure that the sign installation location is suitable to accept and support the installation of the signs being ordered. Notify Pattison ID immediately if further details are required.

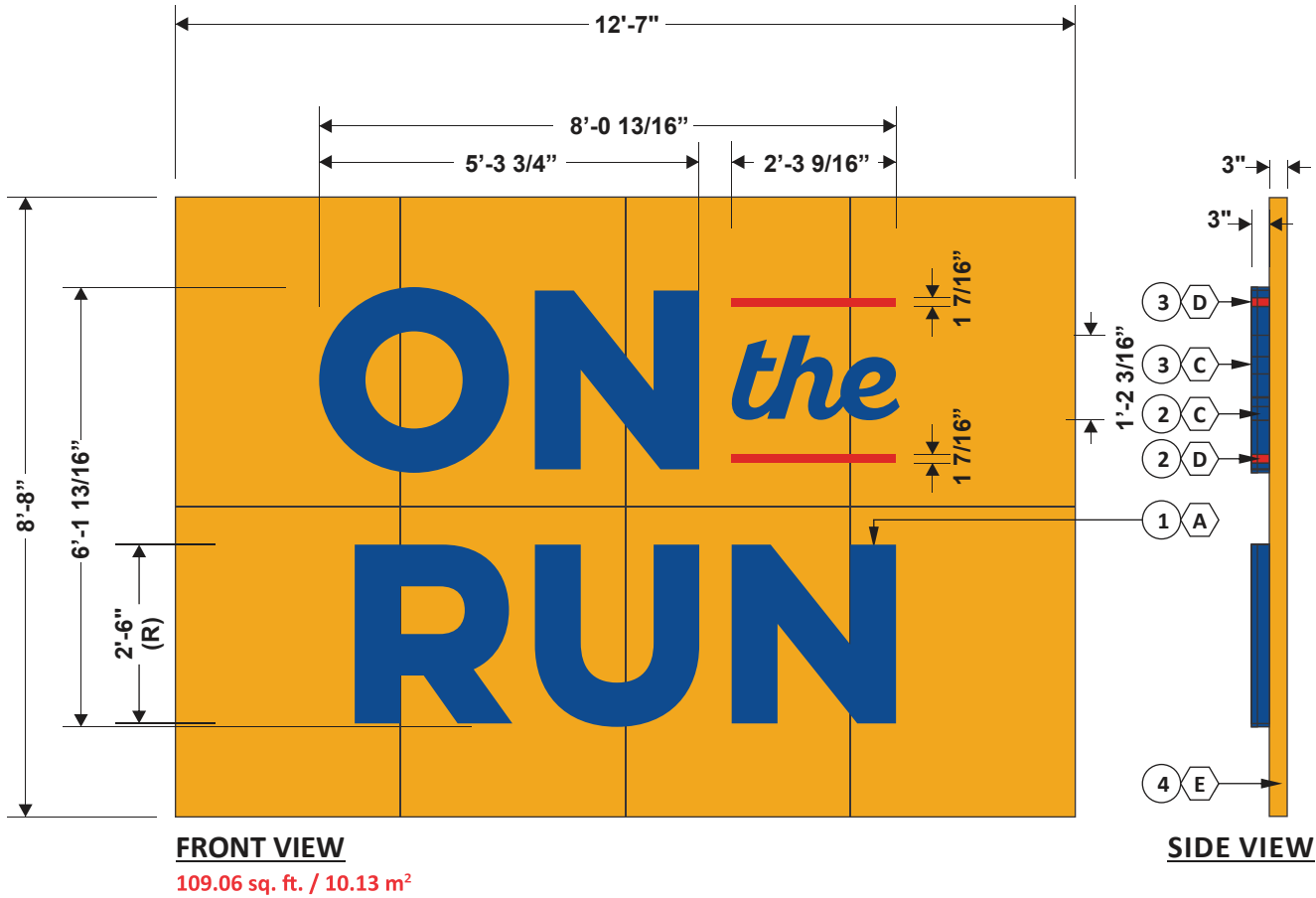
Pattison

id

1.866.635.1110

pattisonid.com

NOTE: TECHNICAL SURVEY HAS NOT BEEN PERFORMED. DIMENSIONS MUST BE VERIFIED PRIOR TO PRODUCTION.



OTR - OPTION 2A
ILLUMINATED CHANNEL LETTERS
ON SUPPORT (VERTICAL)

- | # | Description |
|----|---|
| 1. | 3/16" white acrylic face with vinyl applied to first surface |
| 2. | 0.040" tk. coil painted aluminium siding (pre-painted white inside) & ACM backing |
| 3. | Trim |
| 4. | Fabricated sign support |
| * | Internal illumination by LED's |

Colors:

A	Digitally printed on 3635-210 white perforated vinyl to match 3630-37 blue vinyl with overlamine application (8520 mat)
B	Red vinyl #3630-143
C	Painted to match blue vinyl 3630-37
D	Painted to match red vinyl 3630-143
E	Painted to match yellow vinyl 3630-25

Light output per sign 539 lumens

Project ID
MC5-63173A

Parkland Corporation 80229
15 Boardwalk Drive
Alpine, WY

Sign Item

SG2

Date: 10-29-2024
Scale: 3/8"=1'-0"
Contact: E. Collin
Designer: T. Albert

Revision Note

RV1: TA - 11.06.2024
Ajout de joints dans les panneaux jaunes
RV2: TA - 11.07.2024
Enlever la feuille d'érable

Information Required
for Production

- Joints à être déterminé en production

Customer Approval

Signature

MM/DD/YYYY

All rights reserved. The artwork depicted herein are copyrighted and are the exclusive property of Pattison ID and as such cannot be reproduced and/or distributed, in whole or in part, without written permission of Pattison ID.

It is the Customer's responsibility to ensure that the sign installation location is suitable to accept and support the installation of the signs being ordered. Notify Pattison ID immediately if further details are required.

Pattison



1.866.635.1110
pattisonid.com