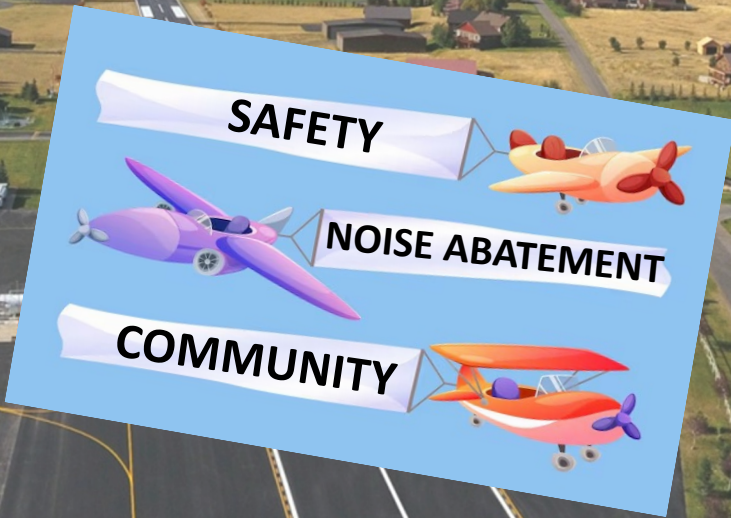




Alpine Airport Safety



46U ALPINE AIRPARK

46U (draft-V2) Transmitt Map

Write a description for your map.

Legend

Inclusion Zone

Google Earth

2000 ft

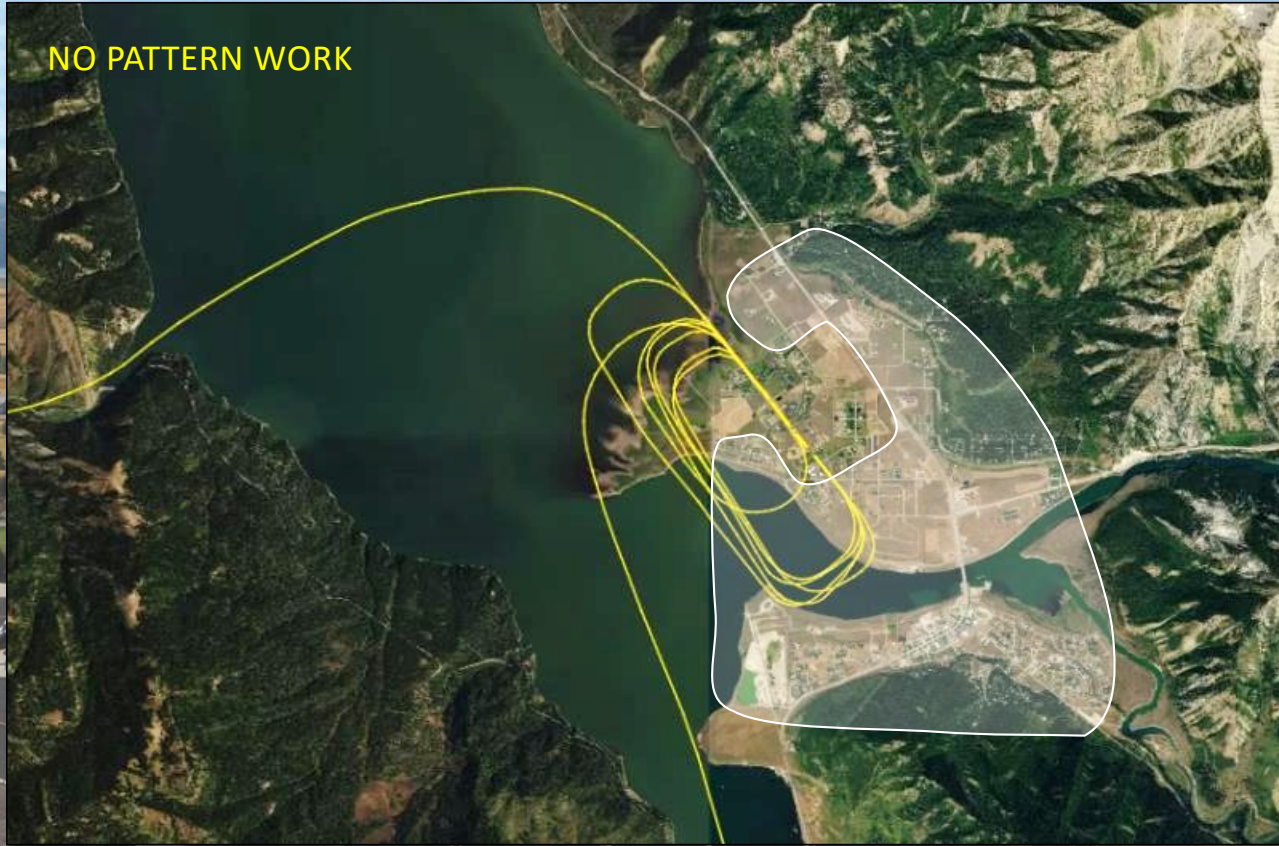
Alpine Airpark
Runway – Safety
was designed
from Inception

Existing procedures have been improved to limit noise
Aircraft are to fly below 7500' unless landing



**No practice touch-and-go landings or low approaches –
This aircraft in the picture shows an aircraft from another airport in
Idaho... the pilot did not know of our noise procedures**

NO PATTERN WORK





Right Downwind Departure Rwy 31 Discouraged

And no low altitude departures over the Grey's River



Helicopter approaches to runway too low over bench – new procedures are being worked on to reduce noise for Helicopters



Proper Procedures for Takeoff (Runway 31) Noise abatement areas in shade





HELICOPTER SAFE OPERATING PROCEDURES COMMITTEE

46U **ALPINE**
AIRPARK

