

JOHN LOTSHAW
ELK MEADOWS SUBDIVISION
ALPINE WY
WATER & SEWER PLANS
CONTRACT RECORD DRAWINGS
2021

ENGINEERING CONSULTANTS

DAVID KENNINGTON, P.E. PROJECT ENGINEER

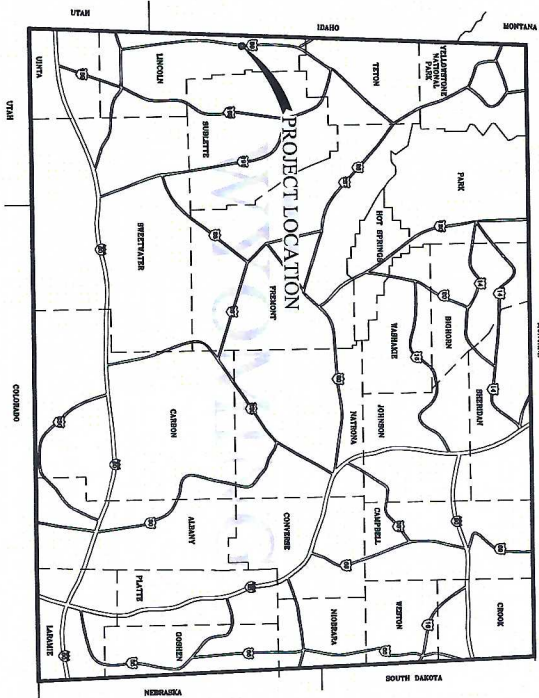
CONTRACT RECORD DRAWINGS

THE INFORMATION CONTAINED ON THIS DRAWING MAY HAVE BEEN
OBTAINED FROM THE RECORD DRAWINGS OF THE PROJECT, BUT
IT IS NOT GUARANTEED THAT THE INFORMATION IS COMPLETE
OR ACCURATE. THE ENGINEER ASSUMES NO LIABILITY FOR
ANY ERRORS OR OMISSIONS. THE USER OF THIS DRAWING
SHOULD CONSULT THE RECORD DRAWINGS OF THE PROJECT
FOR A COMPLETE UNDERSTANDING OF THE PROJECT.
DESIGN NO. 20-001-15



47 EAST 4TH AVENUE
AFTON, WYOMING 83110
TEL: 307.885.8500 • FAX: 307.885.8501
WWW.SUNRISE-ENG.COM

AREA MAP



VICINITY MAP



SHEET INDEX

GENERAL	
COVER SHEET	G1
AREA MAP AND VICINITY MAP SHEET INDEX	G2
ABBREVIATIONS, CONSTRUCTION NOTES, DESIGN CRITERIA, LEGEND	G3
INDEX SHEET	I1
PLAN & PROFILE SHEETS	
SEWER & WATER PLAN & PROFILES	PP1-PP4
ROAD PLAN & PROFILES	PP5-PP6
DETAILS	
WATER SYSTEM DETAILS	DI-D4

CONTRACT RECORD DRAWINGS

NO GUARANTEE IS MADE BY THE ENGINEER FOR THE ACCURACY OF THE INFORMATION CONTAINED HEREIN. THE ENGINEER'S RESPONSIBILITY IS LIMITED TO THE DESIGN OF THE PROJECT AND THE INFORMATION CONTAINED HEREIN. THE ENGINEER DOES NOT WARRANT, REPRESENT, OR GUARANTEE THE ACCURACY OF THE INFORMATION CONTAINED HEREIN. THE ENGINEER'S RESPONSIBILITY IS LIMITED TO THE DESIGN OF THE PROJECT AND THE INFORMATION CONTAINED HEREIN.

47 EAST 4TH AVENUE
SUNRISE
ENGINEERING
TEL: 303.858.8500 • FAX: 303.858.8511
WWW.SUNRISE-ENG.COM

CONTRACT
DRAWING

JOHN LOTSHAW

ELK MEADOWS SUBDIVISION

AREA MAP, VICINITY MAP, SHEET INDEX

SHEET NO. 2 OF 4 G2

GENERAL ABBREVIATIONS

SEWER SYSTEM

A3	ALUM.	ANCHOR BOLT	GSP	GALVANIZED STEEL, PLATE
A8	ALUM.	GATE VALVE	QV	
APPROX.	APPROXIMATELY	HORIZ.	HORIZ.	HORIZONTAL
ASSY.	ASSEMBLY	HV	ID	INSIDE DIAMETER
L	AT (MEASUREMENTS)	N or #	INCH	
B	BLIND FLANGE	INSUL.	INSULATION	
B.F.	BUILDING	LB. or #	LINEAL	LINEAL FEET
B.M.	BENCH MARK	LT	LINEAL	LINEAL FEET
BSC	BUTYNUMOUS SURFACE COURSE	LT	LINEAL	LINEAL FEET
B.W.	BOTH WAYS	MAX.	MAXIMUM	
C	CHANNEL (STRUCTURAL)	MECH.	MECHANICAL	
CI	CAST IRON	MFR.	MANUFACTURER	
CFM	CUBIC FEET PER MINUTE	MIN.	MINIMUM	
CFS	CUBIC FEET PER SECOND	MJ	NUMBER	
£	CENTER LINE	NO. or #	NUMBER	
CMP	CORRUGATED METAL PIPE	O.C.	ON CENTER	
CO	CLEAN OUT	OD	OUTSIDE DIAMETER	
CONC.	CONCRETE	PE	POLYETHYLENE	
CONT.	CONTINUOUS	PE PIPE	POLYETHYLENE PIPE	
CP-C	COPULING	PL	PLATE	
CU FT.	CUBIC FEET	*_	PROPERTY LINE	
CU YD.	CUBIC YARD	Pel	POUNDS per SQUARE INCH	
DEG. or °	DEGREE	PVC	POLYVINYL-CHLORIDE	
DET.	DETAIL	R	RADIUS	
DM. or Ø	DIAMETER	REM.	REMOVE	
DMG.	DIMENSIONAL	RECD	REQUIRED	
DM	DIMENSION	REV.	REVISION	
DIP	DUCTILE IRON PIPE	RW	RIGHT-OF-WAY	
DIST.	DISTRIBUTION	RV	REGISTRATION VEHICLE	
DMG.	DRAWING	S	SLOPE	
EA.	EACH	SPEC.	SPECIFICATION	
E.F.	EACH FACE	SO.	SQUARE	
ELB.	ELBOW	SO. FT.	SQUARE FEET	
ELEV.	ELEVATION	SO. IN.	SQUARE INCHES	
E.W.	EACH WAY	STA.	STATION	
EXIST.	EXISTING	STD.	STANDARD	
F.G.	FINISH GRADE	STL	STEEL	
FLEX.	FLEXIBLE	ST STL	STAINLESS STEEL	
FLG.	FLANGE	TYP.	TYPICAL	
FT or'	FEET	W	WITH	
GA.	GAUGE	WO	WITHOUT	
GALV.	GALVANIZED	W/REQD.	WHERE REQUIRED	
GPM	GALLONS PER MINUTE			

CONSIDERED SIGNIFICANT. MUCH OF THIS INFORMATION IS OBTAINED BY THIRD PARTY SOURCES, SUNRISE ENGINEERING, INC. ASSUMES RESPONSIBILITY FOR INFORMATION INACCURACIES.


13. NOT EVERY CONDITION OR ELEMENT IS SHOWN ON THE PLANS. IT IS UNDERSTOOD THAT THE CONTRACTOR WILL USE INDUSTRY ACCEPTED STANDARD GOOD PRACTICE FOR ALL MISCELLANEOUS WORK NOT EXPLICITLY SHOWN.
14. THE CONTRACTOR SHALL BE RESPONSIBLE FOR VERIFICATION OF ALL DIMENSIONS, ELEVATIONS AND CONDITIONS THAT COULD AFFECT THE WORK. IN THE EVENT OF DISCREPANCY OR QUESTION, THE CONTRACTOR SHALL FORWARD A QUESTION TO THE ENGINEER FOR CLARIFICATION.
15. THE CONTRACTOR SHALL FIELD VERIFY THE LOCATION OF THE EXISTING CONNECTING WATER LINES PRIOR TO CONSTRUCTION. ON THE PLANS, THE CONTRACTOR IS TO CONTACT THE ENGINEER FOR DIRECTION.
16. THE CONTRACTOR SHALL COMPLY WITH THE WYDOT LICENSE FOUND IN THE STANDARD SPECIFICATIONS TO THE MISSOURI HIGHWAY DESIGN STANDARDS AND THE WYDOT TRAFFIC CONTROL FOR ROADWAY WORK OPERATIONS MANUAL.

GENERAL ABBREVIATIONS

A3	ALUM.	ANCHOR BOLT	GSP	GALVANIZED STEEL, PLATE
A8	ALUM.	GATE VALVE	QV	
APPROX.	APPROXIMATELY	HORIZ.	HORIZ.	HORIZONTAL
ASSY.	ASSEMBLY	HV	ID	INSIDE DIAMETER
L	AT (MEASUREMENTS)	N or #	INCH	
B	BLIND FLANGE	INSUL.	INSULATION	
B.F.	BUILDING	LB. or #	LINEAL	LINEAL FEET
B.M.	BENCH MARK	LT	LINEAL	LINEAL FEET
BSC	BUTYNUMOUS SURFACE COURSE	LT	LINEAL	LINEAL FEET
B.W.	BOTH WAYS	MAX.	MAXIMUM	
C	CHANNEL (STRUCTURAL)	MECH.	MECHANICAL	
CI	CAST IRON	MFR.	MANUFACTURER	
CFM	CUBIC FEET PER MINUTE	MIN.	MINIMUM	
CFS	CUBIC FEET PER SECOND	MJ	NUMBER	
£	CENTER LINE	NO. or #	NUMBER	
CMP	CORRUGATED METAL PIPE	O.C.	ON CENTER	
CO	CLEAN OUT	OD	OUTSIDE DIAMETER	
CONC.	CONCRETE	PE	POLYETHYLENE	
CONT.	CONTINUOUS	PE PIPE	POLYETHYLENE PIPE	
CP-C	COPULING	PL	PLATE	
CU FT.	CUBIC FEET	*_	PROPERTY LINE	
CU YD.	CUBIC YARD	Pel	POUNDS per SQUARE INCH	
DEG. or °	DEGREE	PVC	POLYVINYL-CHLORIDE	
DET.	DETAIL	R	RADIUS	
DM. or Ø	DIAMETER	REM.	REMOVE	
DMG.	DIMENSIONAL	RECD	REQUIRED	
DM	DIMENSION	REV.	REVISION	
DIP	DUCTILE IRON PIPE	RW	RIGHT-OF-WAY	
DIST.	DISTRIBUTION	RV	REGISTRATION VEHICLE	
DMG.	DRAWING	S	SLOPE	
EA.	EACH	SPEC.	SPECIFICATION	
E.F.	EACH FACE	SO.	SQUARE	
ELB.	ELBOW	SO. FT.	SQUARE FEET	
ELEV.	ELEVATION	SO. IN.	SQUARE INCHES	
E.W.	EACH WAY	STA.	STATION	
EXIST.	EXISTING	STD.	STANDARD	
F.G.	FINISH GRADE	STL	STEEL	
FLEX.	FLEXIBLE	ST STL	STAINLESS STEEL	
FLG.	FLANGE	TYP.	TYPICAL	
FT or'	FEET	W	WITH	
GA.	GAUGE	WO	WITHOUT	
GALV.	GALVANIZED	W/REQD.	WHERE REQUIRED	
GPM	GALLONS PER MINUTE			

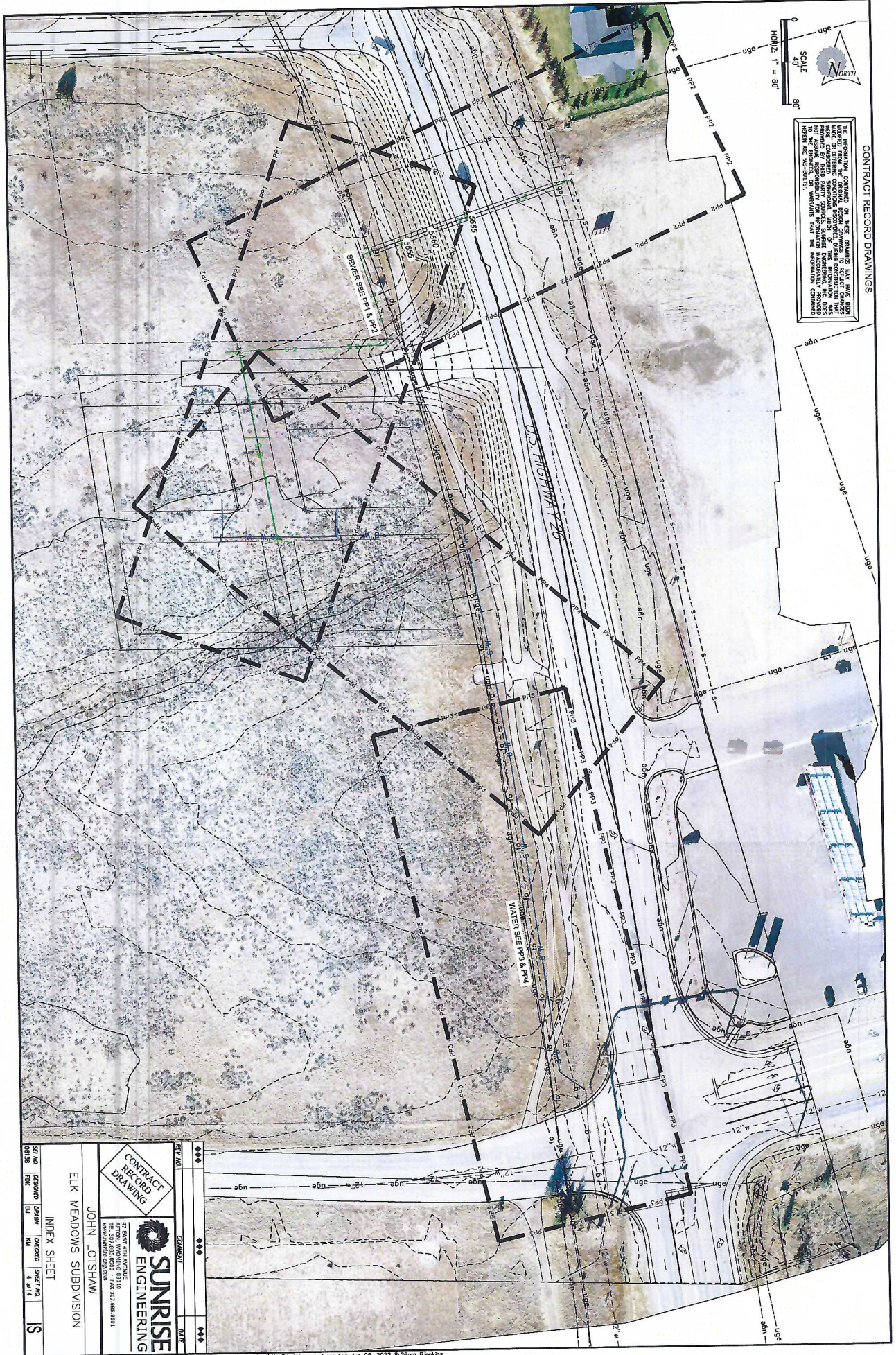
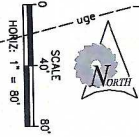
CONTRACT RECORD DRAWINGS

THE INFORMATION CONTAINED ON THESE DRAWINGS MAY HAVE BEEN ADAPTED FROM THE ORIGINAL DESIGN DRAWINGS TO REFLECT CHANGES MADE, OR OTHER CONDITIONS DISCOVERED, DURING CONSTRUCTION THAT WERE CONSIDERED SIGNIFICANT. MUCH OF THIS INFORMATION THAT WAS PROVIDED BY THIRD PARTY SOURCES, SUNSHINE ENGINEERING, INC. DOES NOT ASSUME RESPONSIBILITY FOR INFORMATION INACCURATELY PROVIDED TO THE ENGINEER, OR WARRANTIES THAT THE INFORMATION CONTAINED HEREIN ARE "AS-BUILT'S".

♦♦♦	♦♦♦	♦♦♦
NEW YORK	CONNECTICUT	MAINE
<div style="border: 1px solid black; padding: 5px; transform: rotate(-45deg); display: inline-block;"> CONTRACT RECORD DRAWING </div>	 SUNRISE ENGINEERING	
527 MAIN ST. PO BOX 100 NEW YORK, NY 10010	1000 E. 10TH AVE. APT. 202 WICHITA, KS 67202	1000 E. 10TH AVE. APT. 202 WICHITA, KS 67202
GENERAL NOTES AND ABBREVIATIONS	ELK MEADOWS SUBDIVISION JOHN LOTSHAW	
527 MAIN ST. PO BOX 100 NEW YORK, NY 10010	1000 E. 10TH AVE. APT. 202 WICHITA, KS 67202	1000 E. 10TH AVE. APT. 202 WICHITA, KS 67202

CONTRACT RECORD DRAWINGS

THE INFORMATION CONTAINED ON THESE DRAWINGS WAS OBTAINED FROM THE RECORD DRAWINGS OF THE PREVIOUS PROJECT AND THE INFORMATION WAS PROVIDED BY THE PREVIOUS PROJECT. THE INFORMATION WAS PROVIDED BY THE PREVIOUS PROJECT AND THE INFORMATION WAS PROVIDED BY THE PREVIOUS PROJECT. THE INFORMATION WAS PROVIDED BY THE PREVIOUS PROJECT.



507	NO	DESIGNED	DATE	15
0013	NO	DRAWN	DATE	15
0013	NO	CHECKED	DATE	15
0013	NO	INDEX SHEET	DATE	15

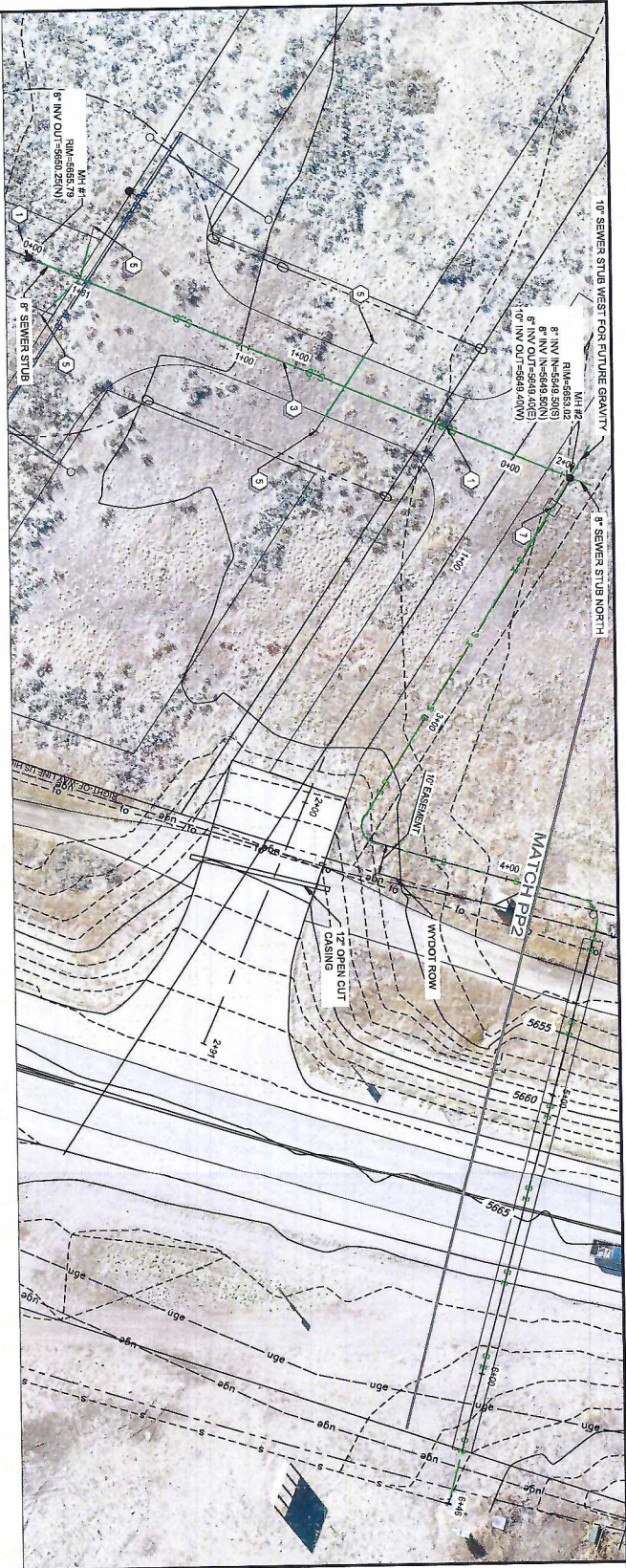
CONTRACT RECORD DRAWING

ELK MEADOWS SUBDIVISION

JOHN LOTSHAW

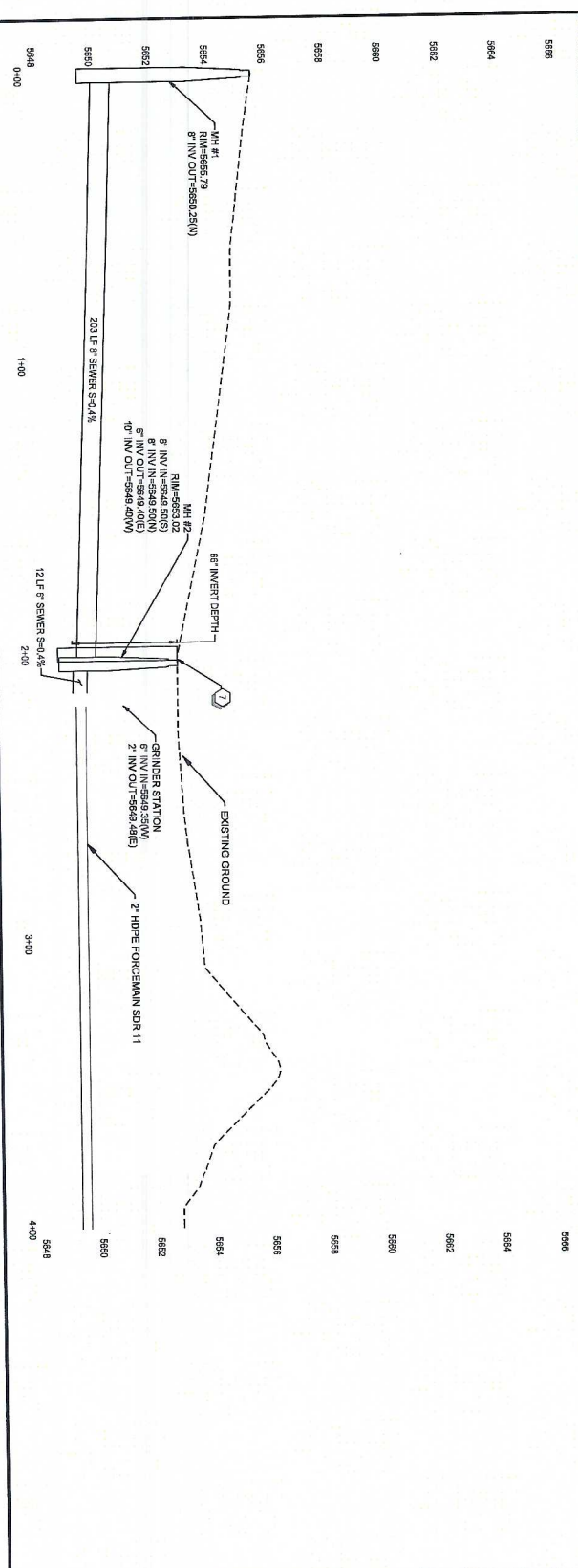
SUNRISE ENGINEERING

47 EAST KATA ANCHORS
SALT LAKE CITY, UT 84143
TEL: 303.488.9500 - FAX: 303.488.5521
WWW.SUNRISE-ENG.COM

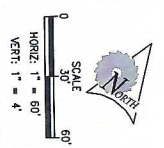


SEWER LINE NOTES:

- 1 NEW MANHOLE PER (15)
- 2 NEW 8" PVC SDR25 SEWER LINE PER (15)
- 3 NEW 8" PVC SDR 35 SEWER LINE (15)
- 4 NEW 10" CASING UNDER ROADWAY (15)
- 5 NEW SEWER SERVICE (15)
- 6 NEW CLEANOUT (15)
- 7 NEW GRINDER STATION PER (15)



CONTRACT RECORD DRAWINGS



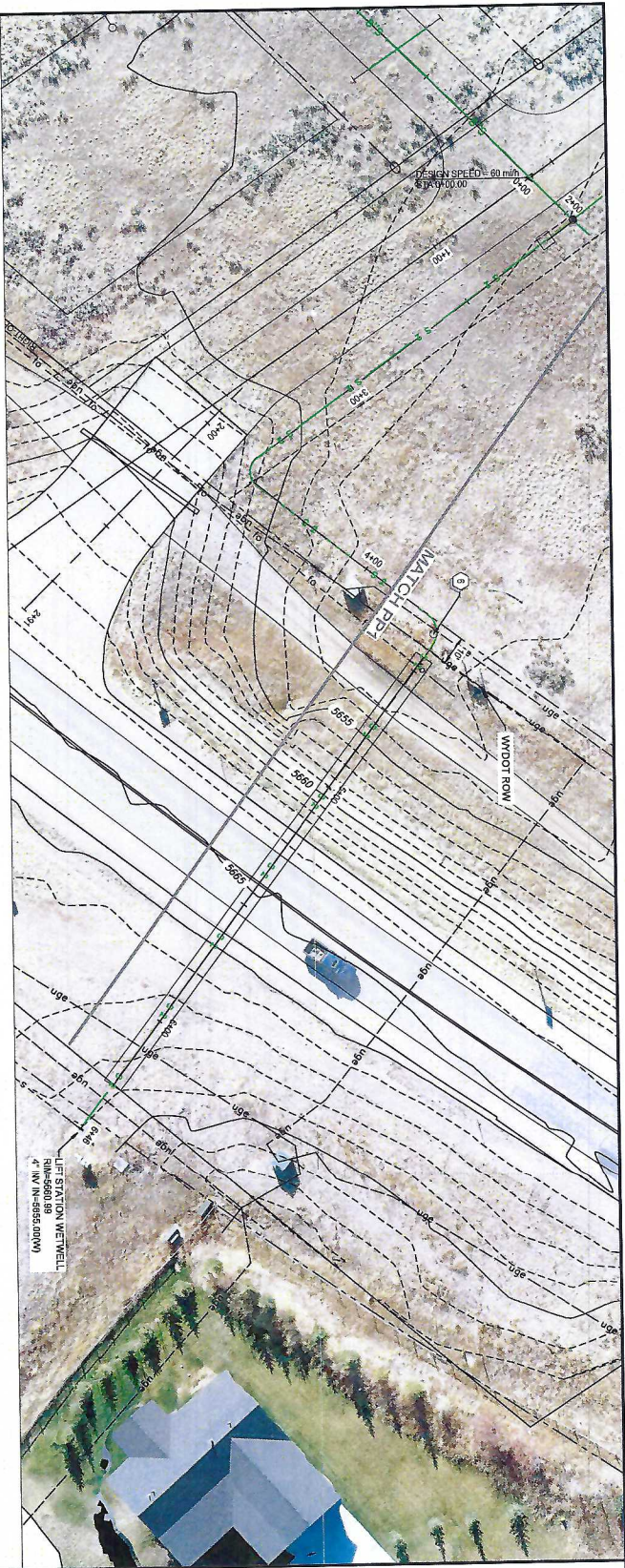
THE INFORMATION CONTAINED ON THIS DRAWING WAS PREPARED BY THE ENGINEER OR SURVEYOR AND IS NOT TO BE USED FOR ANY OTHER PROJECT OR PURPOSE WITHOUT THE WRITTEN CONSENT OF THE ENGINEER OR SURVEYOR. THE ENGINEER OR SURVEYOR IS NOT RESPONSIBLE FOR ANY ERRORS OR OMISSIONS IN THIS DRAWING OR FOR ANY CONSEQUENCES ARISING FROM THE USE OF THIS DRAWING FOR ANY OTHER PROJECT OR PURPOSE.

CONTRACT RECORD DRAWING

SUNRISE ENGINEERING

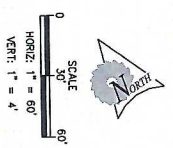
47 EAST 7TH AVENUE
TULSA, OK 74103
WWW.SUNRISE-ENGINEERING.COM

SEW. NO.	DESIGNED	DRAWN	CHECKED	SHEET NO.	PP1
08135	PKK	SO	RM	3 of 14	



SEWER LINE NOTES:

1. NEW MANHOLE PER (16)
2. NEW 6" PVC SD225 SEWER LINE PER (16)
3. NEW 6" PVC SD225 SEWER LINE PER (16)
4. NEW 10" CASING UNDER ROADWAY (16)
5. NEW SEWER SERVICE (16)
6. NEW CLEANOUT (16)
7. NEW GRINDER STATION PER (16)



CONTRACT RECORD DRAWINGS

THE INFORMATION CONTAINED ON THESE DRAWINGS AND ANY INSTRUMENTS ATTACHED HERETO, IS THE PROPERTY OF SUNRISE ENGINEERING, INC. AND IS NOT TO BE REPRODUCED, COPIED, OR TRANSMITTED IN ANY FORM OR BY ANY MEANS, WITHOUT THE WRITTEN PERMISSION OF SUNRISE ENGINEERING, INC. ANY VIOLATION OF THIS NOTICE SHALL BE SUBJECT TO LEGAL ACTION.

CONTRACT RECORD DRAWING

SUNRISE ENGINEERING

47 EAST 6TH AVENUE
TULSA, OK 74103
TEL: 918.485.8000 • FAX: 918.485.8001
WWW.SUNRISE-OK.COM

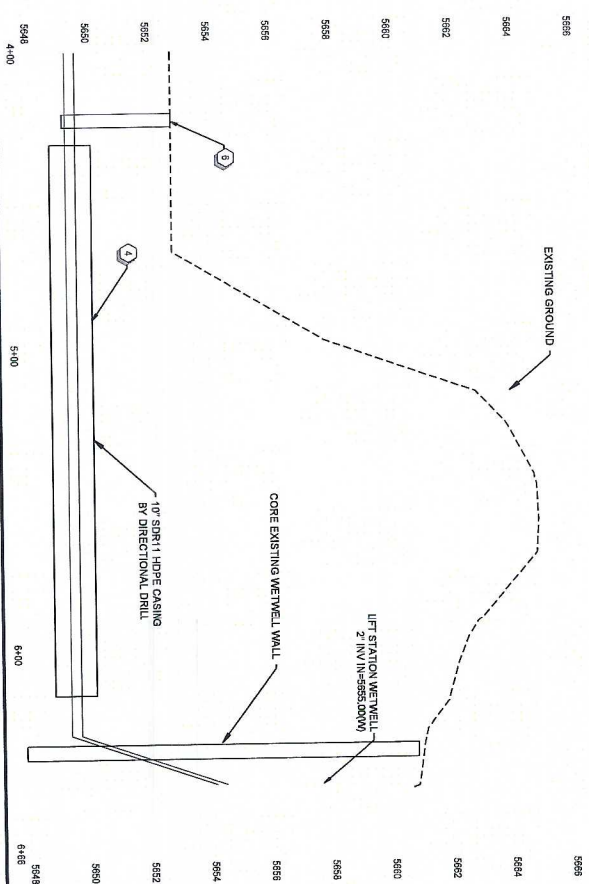
JOHN LOTSHAW

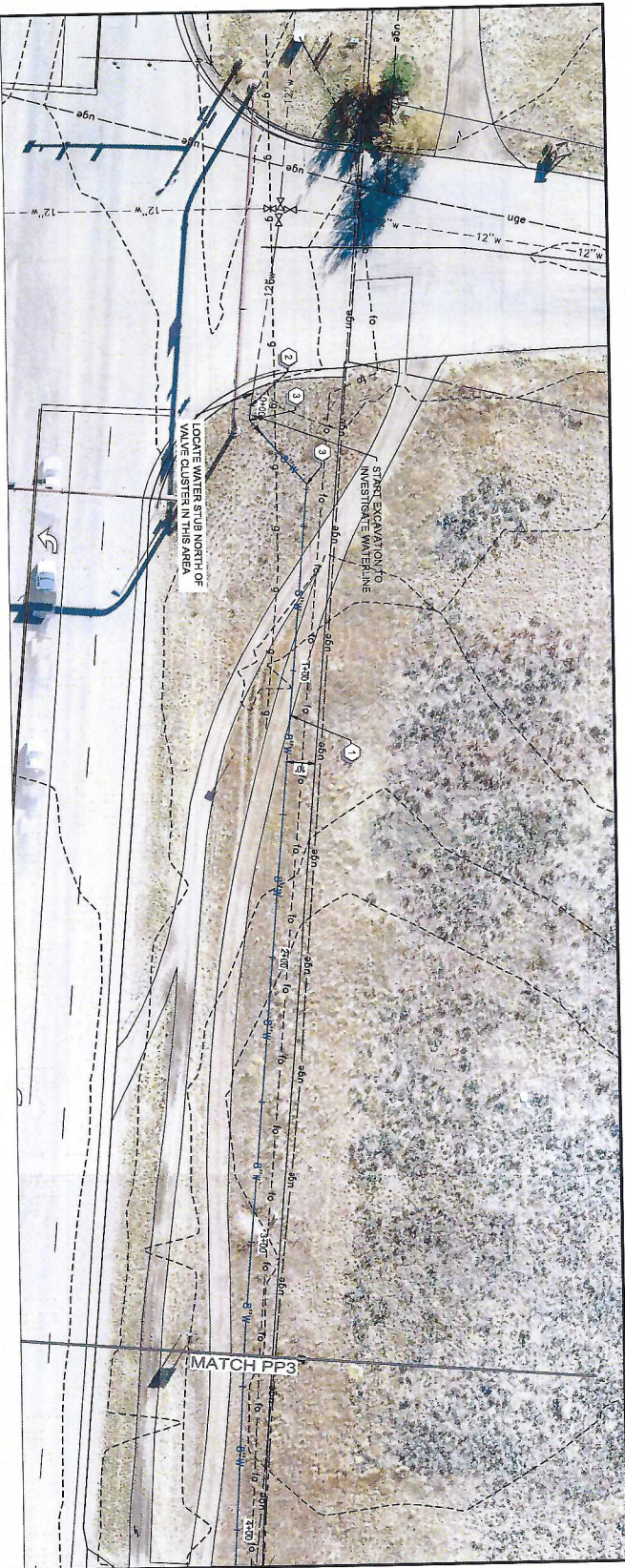
ELK MEADOWS SUBDIVISION

SEWER

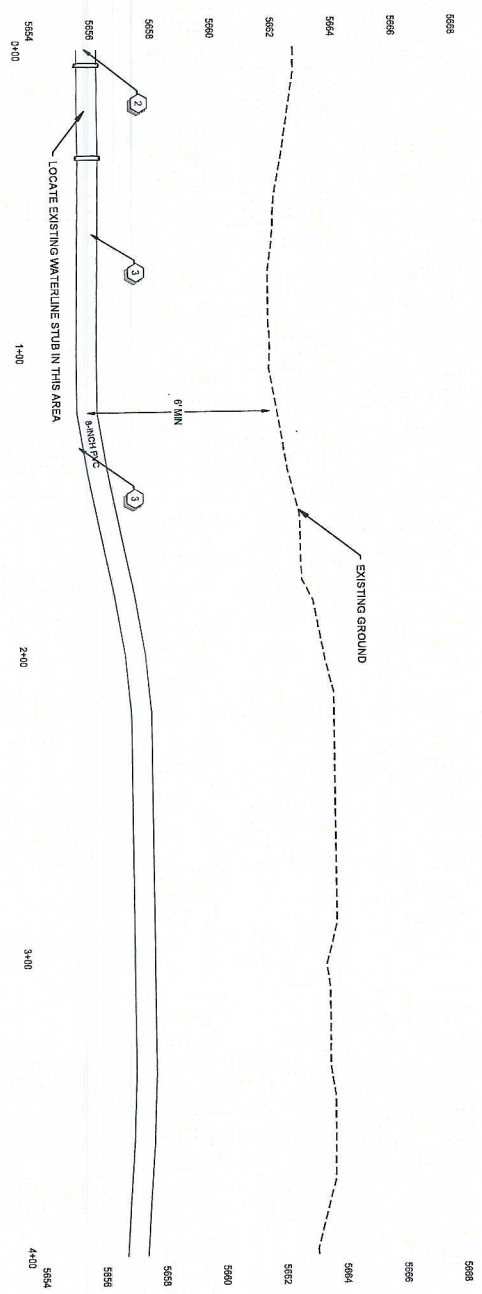
PLAN AND PROFILE

SHEET NO. **PP2**





- WATERLINE NOTES:**
- 1 NEW 8" WATERLINE PER (B) (S)
 - 2 CONNECT TO EXISTING WATERLINE
 - 3 SEND (90° 45° 22 1/2° ETC.)
 - 4 GATE VALVE PER (B) (S)
 - 5 FIRE HYDRANT PER (B) (S)
 - 6 TEE WITH THRUST BLOCK PER (B) (S)
 - 7 NEW WATER SERVICE PER (B) (S)
 - 8 NEW AIR RELEASE VALVE PER (B) (S)
 - 9 BLIND FLANGE WITH THRUST BLOCK PER (B) (S)

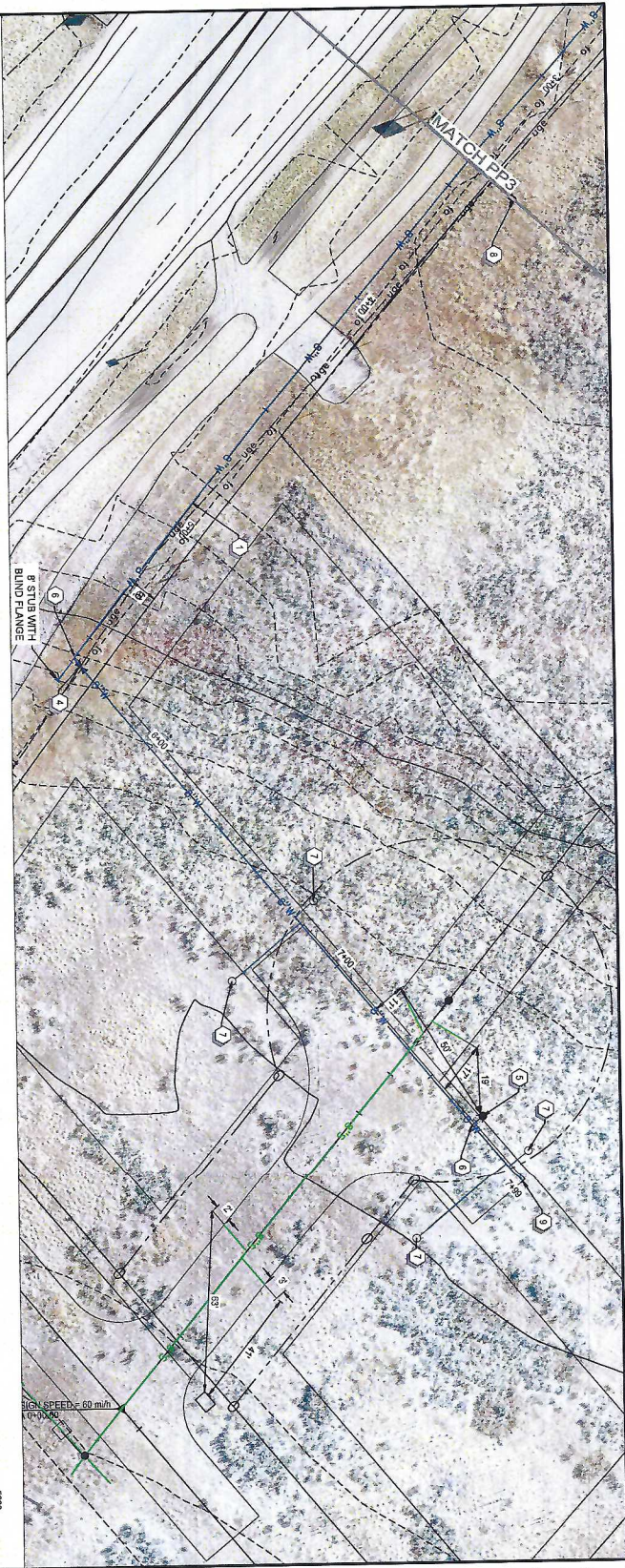


CONTRACT RECORD DRAWINGS

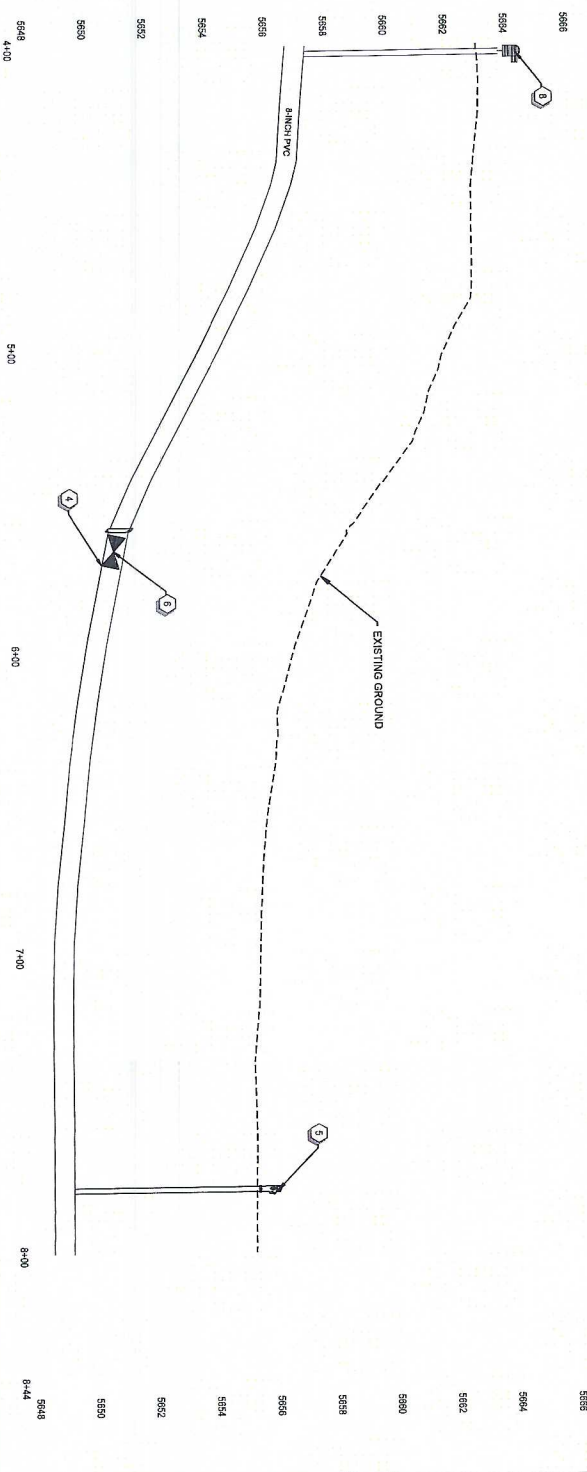
ALL INFORMATION CONTAINED ON THESE DRAWINGS HAS BEEN OBTAINED FROM THE ORIGINAL DESIGN DRAWINGS TO WHICH OWNERS HAVE PROVIDED WRITTEN PERMISSION TO REPRODUCE. ANY INFORMATION NOT SHOWN ON THESE DRAWINGS IS THE RESPONSIBILITY OF THE USER. THE INFORMATION CONTAINED HEREIN IS FOR INFORMATION ONLY AND DOES NOT CONSTITUTE A CONTRACT. THE INFORMATION CONTAINED HEREIN IS NOT TO BE USED FOR ANY OTHER PURPOSE WITHOUT THE WRITTEN PERMISSION OF THE ENGINEER.

SCALE
HORIZ. 1" = 60'
VERT. 1" = 4'

CONTRACT RECORD DRAWING		SUNRISE ENGINEERING 401 EAST 7TH AVENUE, SUITE 110 DENVER, CO 80202 TEL: 303.885.8500 • FAX: 303.885.8501 WWW.SUNRISEENGINEERING.COM
DESIGNED BY: JLM CHECKED BY: JLM DATE: 10/1/20	DRAWN BY: JLM CHECKED BY: JLM DATE: 10/1/20	PROJECT: ELK MEADOWS SUBDIVISION WATER SHEET NO: PP3



- WATERLINE NOTES:**
- 1 NEW 6" WATERLINE PER (B) (S)
 - 2 CONNECT TO EXISTING WATERLINE
 - 3 BEND 90° 45° 22 1/2° ETC. (B) (S)
 - 4 GATE VALVE PER (B) (S)
 - 5 FIRE HYDRANT PER (B) (S)
 - 6 TEE WITH THRUST BLOCK PER (B) (S)
 - 7 NEW WATER SERVICE PER (B) (S)
 - 8 NEW AIR RELEASE VALVE PER (B) (S)
 - 9 BLIND FLANGE WITH THRUST BLOCK PER (B) (S)



CONTRACT RECORD DRAWINGS

1. ALL DRAWINGS CONTAINED IN THESE DRAWINGS MAY HAVE BEEN
 ADDED TO OR DELETED FROM THE ORIGINAL DESIGN DRAWINGS TO REFLECT CHANGES
 MADE TO THE PROJECT. THE CONTRACTOR SHALL BE RESPONSIBLE FOR THE ACCURACY OF THE
 INFORMATION CONTAINED HEREIN. THE CONTRACTOR SHALL BE RESPONSIBLE FOR THE
 ACCURACY OF THE INFORMATION CONTAINED HEREIN. THE CONTRACTOR SHALL BE
 RESPONSIBLE FOR THE ACCURACY OF THE INFORMATION CONTAINED HEREIN.

SCALE
 HORIZ: 1" = 60'
 VERT: 1" = 4'

CONTRACT RECORD DRAWING

SUNRISE ENGINEERING

4250 17TH AVENUE
 SUITE 100
 DENVER, CO 80202
 TEL: 303.733.4333 FAX: 303.733.4331
 WWW.SUNRISE-ENGINEERING.COM

JOHN LOTSHAW

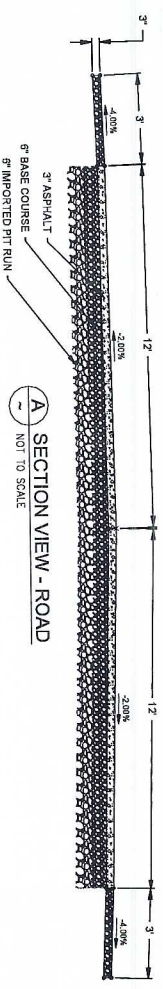
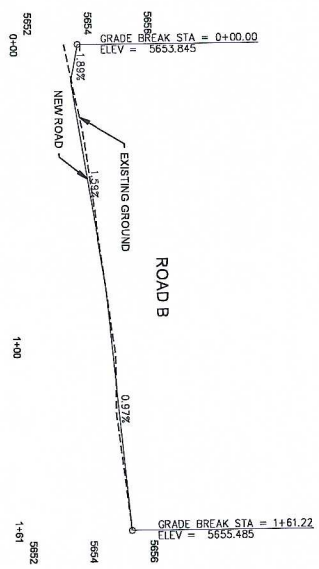
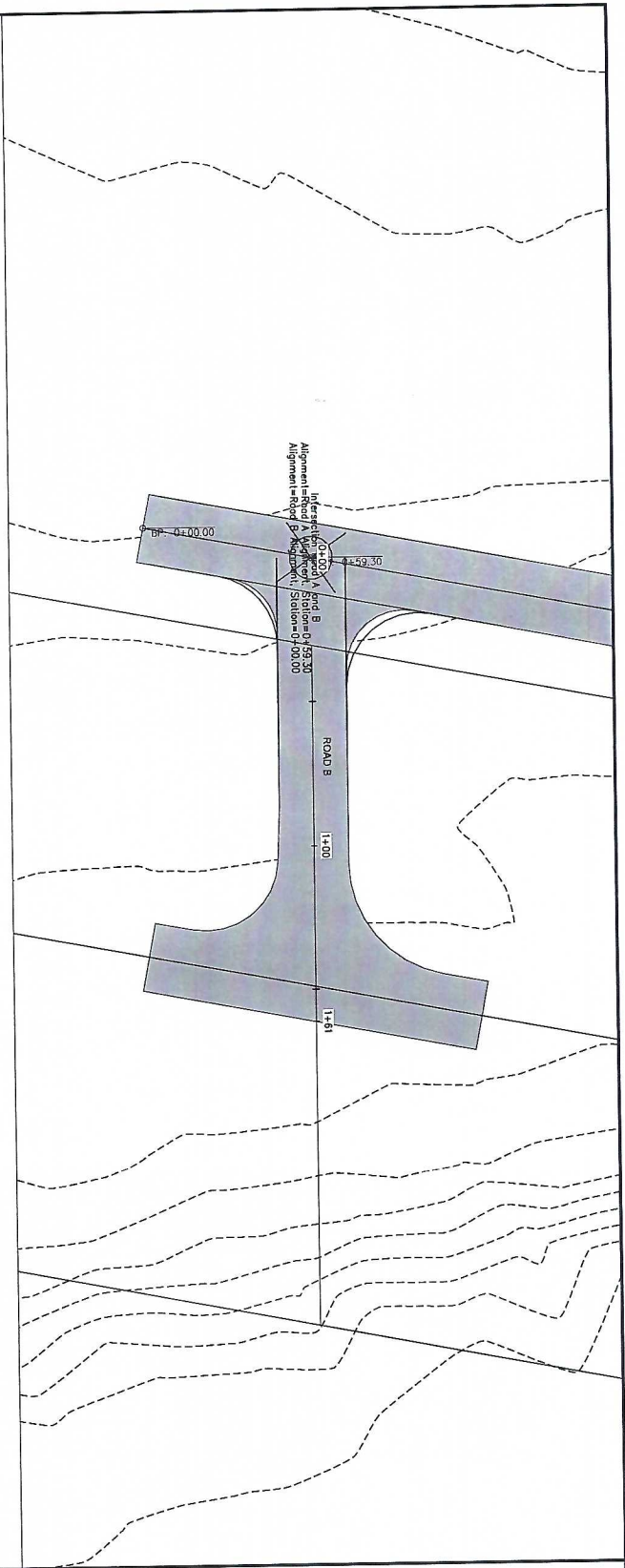
ELK MEADOWS SUBDIVISION

WATER

PLAN AND PROFILE

PP4

50	NO.	DESIGNED	BY	CHKD	DATE
08138	104	10/10/11	10/10/11	10/10/11	10/10/11



CONTRACT RECORD DRAWINGS

THE INFORMATION CONTAINED ON THESE DRAWINGS MAY HAVE BEEN OBTAINED FROM A SOURCE OTHER THAN THE ENGINEER. THE ENGINEER MAKES NO WARRANTY, REPRESENTATION OR GUARANTEE AS TO THE ACCURACY, COMPLETENESS OR RELIABILITY OF SUCH INFORMATION. THE ENGINEER SHALL NOT BE RESPONSIBLE FOR ANY ERRORS OR OMISSIONS IN THE INFORMATION CONTAINED HEREON, OR FOR ANY CONSEQUENCES ARISING FROM THE USE OF SUCH INFORMATION.

CONTRACT RECORD

DATE:

BY:

FOR:

SUNRISE ENGINEERING

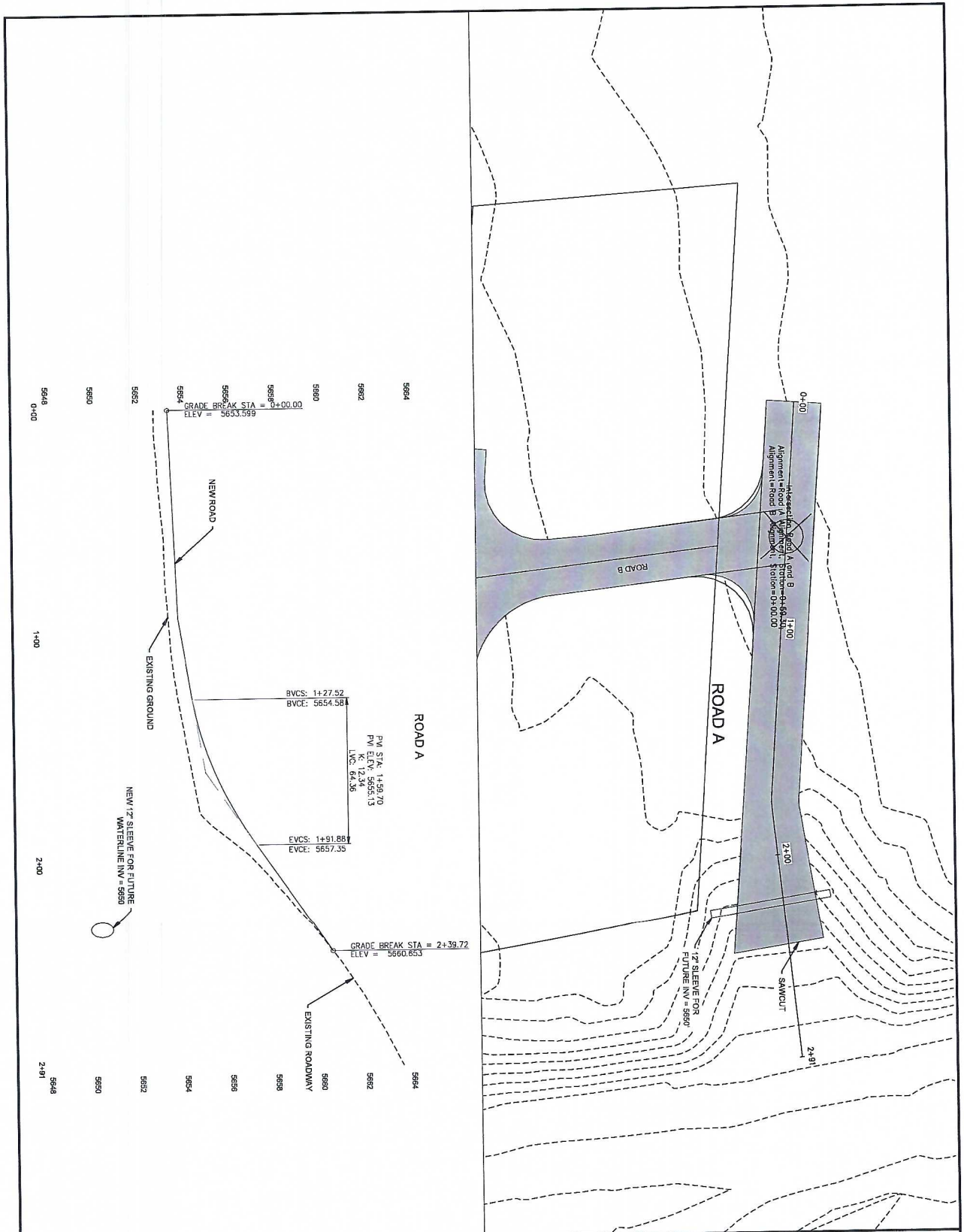
47 EAST 4TH AVENUE
DENVER, CO 80202
TEL: 303.733.8000 • FAX: 303.733.8001
WWW.SUNRISE-ENG.COM

JOHN LOTSHAW

ELK MEADOWS SUBDIVISION

ROAD B PLAN & PROFILE

SHEET NO. **PP6**



CONTRACT RECORD DRAWINGS

THE INFORMATION CONTAINED ON THESE DRAWINGS WAS PREPARED BY THE ENGINEER OR SURVEYOR AND IS NOT TO BE USED FOR ANY OTHER PURPOSE WITHOUT THE WRITTEN CONSENT OF THE ENGINEER OR SURVEYOR. THE ENGINEER OR SURVEYOR DOES NOT WARRANT THE ACCURACY OF THE INFORMATION CONTAINED HEREON FOR ANY OTHER PURPOSE.

DATE:

BY:

FOR:

CONTRACT RECORD DRAWINGS

THE INFORMATION CONTAINED ON THESE DRAWINGS WAS PREPARED BY THE ENGINEER OR SURVEYOR AND IS NOT TO BE USED FOR ANY OTHER PURPOSE WITHOUT THE WRITTEN CONSENT OF THE ENGINEER OR SURVEYOR. THE ENGINEER OR SURVEYOR DOES NOT WARRANT THE ACCURACY OF THE INFORMATION CONTAINED HEREON FOR ANY OTHER PURPOSE.

DATE:

BY:

FOR:

CONTRACT RECORD DRAWINGS

THE INFORMATION CONTAINED ON THESE DRAWINGS WAS PREPARED BY THE ENGINEER OR SURVEYOR AND IS NOT TO BE USED FOR ANY OTHER PURPOSE WITHOUT THE WRITTEN CONSENT OF THE ENGINEER OR SURVEYOR. THE ENGINEER OR SURVEYOR DOES NOT WARRANT THE ACCURACY OF THE INFORMATION CONTAINED HEREON FOR ANY OTHER PURPOSE.

DATE:

BY:

FOR:

CONTRACT RECORD DRAWINGS

THE INFORMATION CONTAINED ON THESE DRAWINGS WAS PREPARED BY THE ENGINEER OR SURVEYOR AND IS NOT TO BE USED FOR ANY OTHER PURPOSE WITHOUT THE WRITTEN CONSENT OF THE ENGINEER OR SURVEYOR. THE ENGINEER OR SURVEYOR DOES NOT WARRANT THE ACCURACY OF THE INFORMATION CONTAINED HEREON FOR ANY OTHER PURPOSE.

DATE:

BY:

FOR:

CONTRACT RECORD DRAWINGS

THE INFORMATION CONTAINED ON THESE DRAWINGS WAS PREPARED BY THE ENGINEER OR SURVEYOR AND IS NOT TO BE USED FOR ANY OTHER PURPOSE WITHOUT THE WRITTEN CONSENT OF THE ENGINEER OR SURVEYOR. THE ENGINEER OR SURVEYOR DOES NOT WARRANT THE ACCURACY OF THE INFORMATION CONTAINED HEREON FOR ANY OTHER PURPOSE.

DATE:

BY:

FOR:

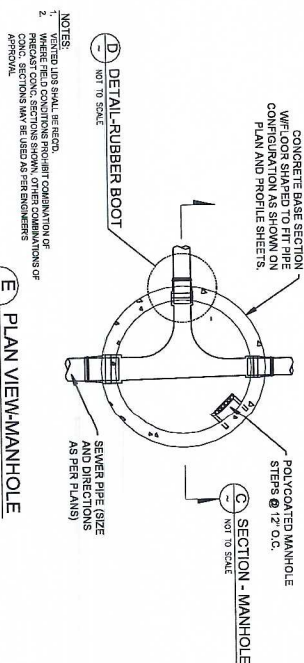
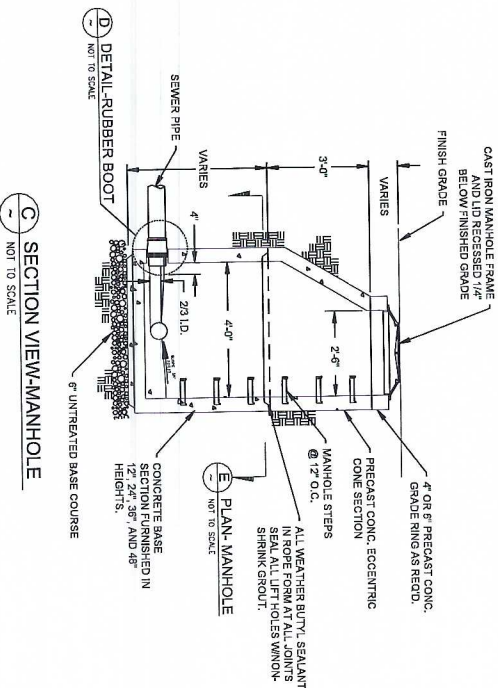
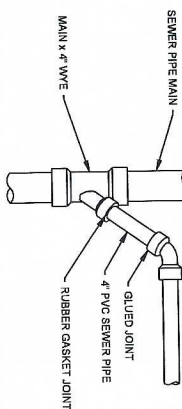
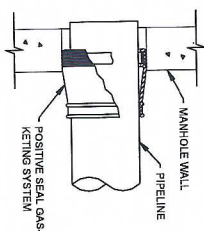
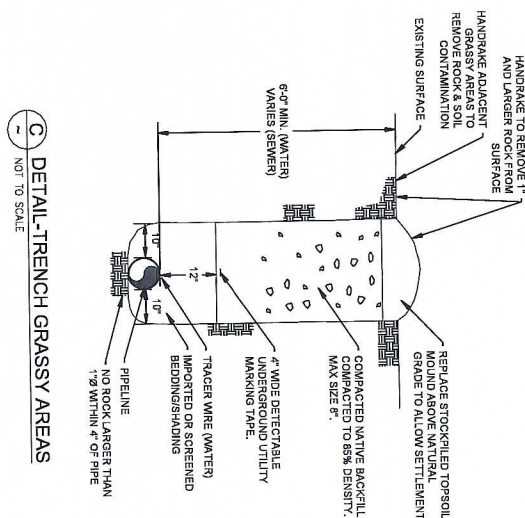
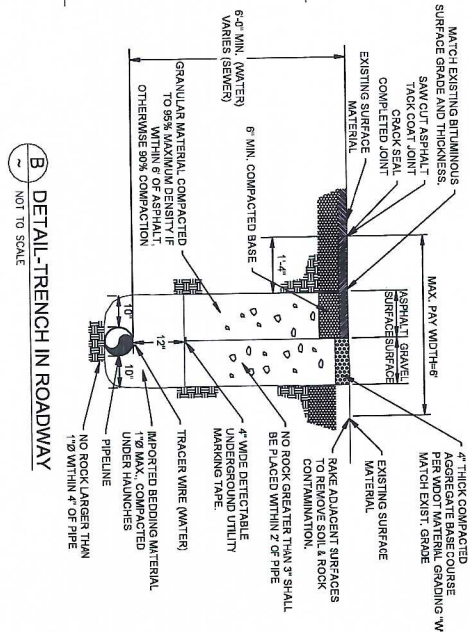
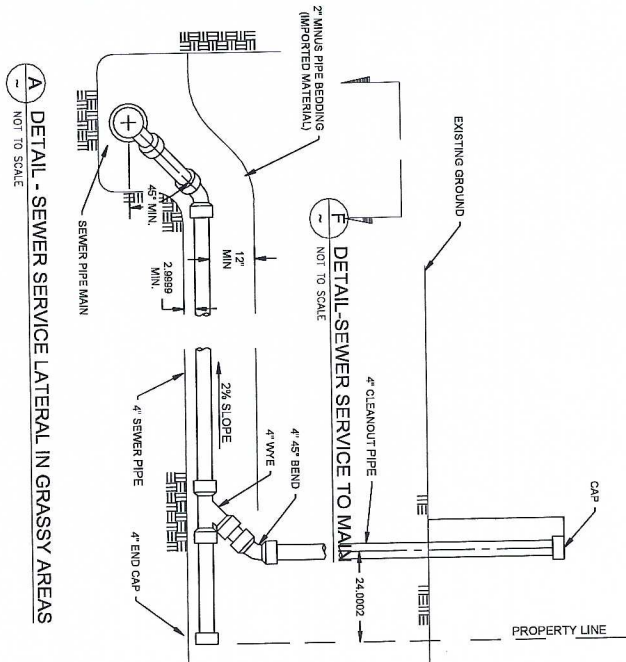
CONTRACT RECORD DRAWINGS

THE INFORMATION CONTAINED ON THESE DRAWINGS WAS PREPARED BY THE ENGINEER OR SURVEYOR AND IS NOT TO BE USED FOR ANY OTHER PURPOSE WITHOUT THE WRITTEN CONSENT OF THE ENGINEER OR SURVEYOR. THE ENGINEER OR SURVEYOR DOES NOT WARRANT THE ACCURACY OF THE INFORMATION CONTAINED HEREON FOR ANY OTHER PURPOSE.

DATE:

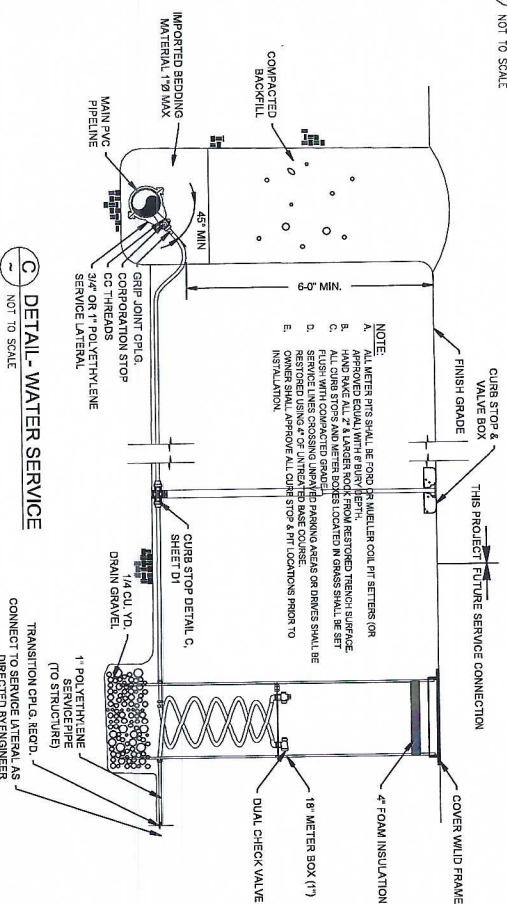
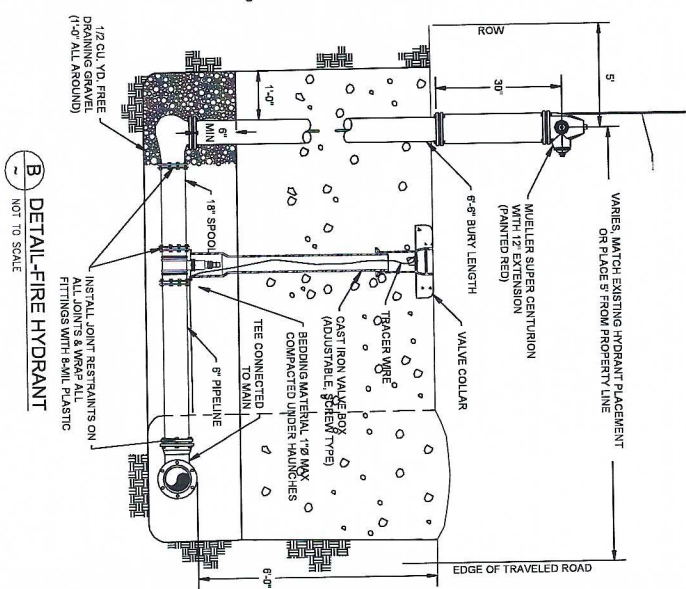
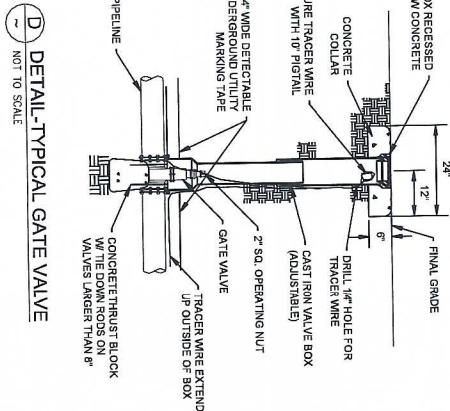
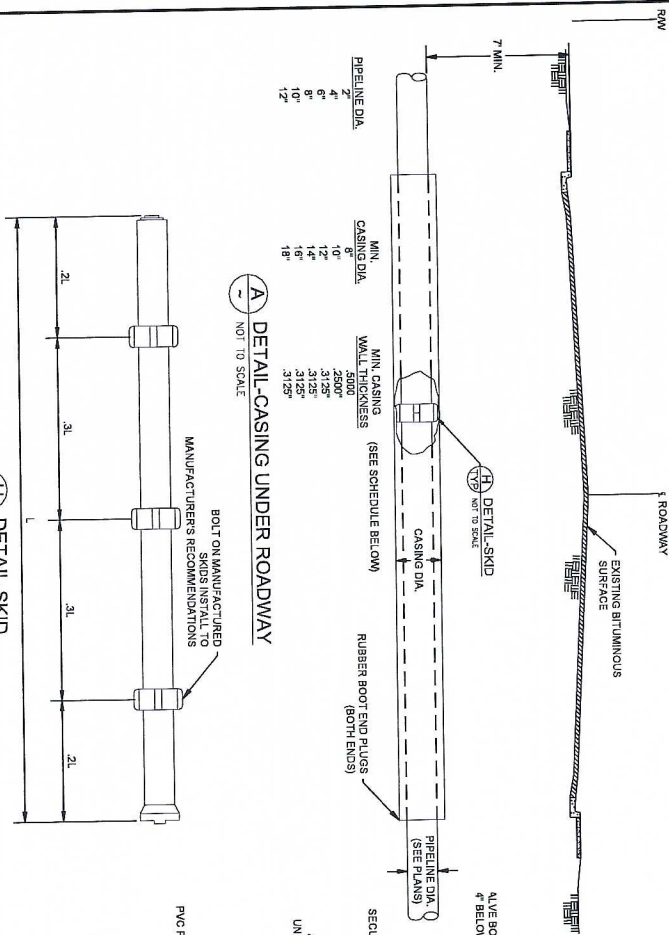
BY:

FOR:



1. VINTED LIDS SHALL BE REQD.
2. WHERE FIELD CONDITIONS PROHIBIT COMBINATION OF
PRECAST CONC. SECTIONS SHOWN, OTHER COMBINATIONS OF
CONC. SECTIONS MAY BE USED AS PER ENGINEERS
APPROVAL.

<p>THE INFORMATION CONTAINED ON THESE DRAWINGS MAY HAVE BEEN OBTAINED FROM THE ORIGINAL DESIGN ORIGINATOR OR BY DIRECT CONTACT WITH THE DESIGNER OR BY OTHER MEANS. THE INFORMATION HAS NOT BEEN VERIFIED BY THE ENGINEER. THE ENGINEER ASSUMES NO LIABILITY FOR ANY ERRORS OR OMISSIONS. THE ENGINEER ASSUMES NO LIABILITY FOR ANY DAMAGE TO PERSONS OR PROPERTY CAUSED BY THE USE OF THESE DRAWINGS. THE ENGINEER ASSUMES NO LIABILITY FOR ANY DAMAGE TO PERSONS OR PROPERTY CAUSED BY THE USE OF THESE DRAWINGS.</p>			
<p>DATE: 10/1/2013</p>	<p>DATE: 10/1/2013</p>	<p>DATE: 10/1/2013</p>	<p>DATE: 10/1/2013</p>
<p>CONTRACT RECORD DRAWING</p>	<p>CONTRACT RECORD DRAWING</p>	<p>CONTRACT RECORD DRAWING</p>	<p>CONTRACT RECORD DRAWING</p>
<p>727 EAST 3000 SOUTH APT. 101, WASHINGTON, UT 84053 TEL: 801-223-8885 WWW.SUNRISEENGINEERING.COM</p>	<p>727 EAST 3000 SOUTH APT. 101, WASHINGTON, UT 84053 TEL: 801-223-8885 WWW.SUNRISEENGINEERING.COM</p>	<p>727 EAST 3000 SOUTH APT. 101, WASHINGTON, UT 84053 TEL: 801-223-8885 WWW.SUNRISEENGINEERING.COM</p>	<p>727 EAST 3000 SOUTH APT. 101, WASHINGTON, UT 84053 TEL: 801-223-8885 WWW.SUNRISEENGINEERING.COM</p>
<p>ELK MEADOWS SUBDIVISION</p>	<p>ELK MEADOWS SUBDIVISION</p>	<p>ELK MEADOWS SUBDIVISION</p>	<p>ELK MEADOWS SUBDIVISION</p>
<p>JOHN LOTSHAW</p>	<p>JOHN LOTSHAW</p>	<p>JOHN LOTSHAW</p>	<p>JOHN LOTSHAW</p>
<p>DESIGNED: []</p>	<p>DESIGNED: []</p>	<p>DESIGNED: []</p>	<p>DESIGNED: []</p>
<p>CHECKED: []</p>	<p>CHECKED: []</p>	<p>CHECKED: []</p>	<p>CHECKED: []</p>
<p>DATE: 10/1/2013</p>	<p>DATE: 10/1/2013</p>	<p>DATE: 10/1/2013</p>	<p>DATE: 10/1/2013</p>
<p>D1</p>	<p>D1</p>	<p>D1</p>	<p>D1</p>

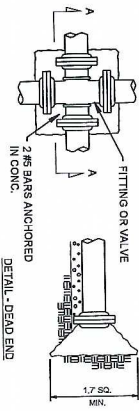


CONTRACT RECORD DRAWINGS									
NO.	DATE	BY	CHKD	APP'D	DATE	NO.	DATE	BY	CHKD
1	10/15/21	JOHN LOTSHAW				2	10/15/21	JOHN LOTSHAW	
3	10/15/21	JOHN LOTSHAW				4	10/15/21	JOHN LOTSHAW	
5	10/15/21	JOHN LOTSHAW				6	10/15/21	JOHN LOTSHAW	
7	10/15/21	JOHN LOTSHAW				8	10/15/21	JOHN LOTSHAW	
9	10/15/21	JOHN LOTSHAW				10	10/15/21	JOHN LOTSHAW	
11	10/15/21	JOHN LOTSHAW				12	10/15/21	JOHN LOTSHAW	
13	10/15/21	JOHN LOTSHAW				14	10/15/21	JOHN LOTSHAW	
15	10/15/21	JOHN LOTSHAW				16	10/15/21	JOHN LOTSHAW	
17	10/15/21	JOHN LOTSHAW				18	10/15/21	JOHN LOTSHAW	
19	10/15/21	JOHN LOTSHAW				20	10/15/21	JOHN LOTSHAW	
21	10/15/21	JOHN LOTSHAW				22	10/15/21	JOHN LOTSHAW	
23	10/15/21	JOHN LOTSHAW				24	10/15/21	JOHN LOTSHAW	
25	10/15/21	JOHN LOTSHAW				26	10/15/21	JOHN LOTSHAW	
27	10/15/21	JOHN LOTSHAW				28	10/15/21	JOHN LOTSHAW	
29	10/15/21	JOHN LOTSHAW				30	10/15/21	JOHN LOTSHAW	
31	10/15/21	JOHN LOTSHAW				32	10/15/21	JOHN LOTSHAW	
33	10/15/21	JOHN LOTSHAW				34	10/15/21	JOHN LOTSHAW	
35	10/15/21	JOHN LOTSHAW				36	10/15/21	JOHN LOTSHAW	
37	10/15/21	JOHN LOTSHAW				38	10/15/21	JOHN LOTSHAW	
39	10/15/21	JOHN LOTSHAW				40	10/15/21	JOHN LOTSHAW	
41	10/15/21	JOHN LOTSHAW				42	10/15/21	JOHN LOTSHAW	
43	10/15/21	JOHN LOTSHAW				44	10/15/21	JOHN LOTSHAW	
45	10/15/21	JOHN LOTSHAW				46	10/15/21	JOHN LOTSHAW	
47	10/15/21	JOHN LOTSHAW				48	10/15/21	JOHN LOTSHAW	
49	10/15/21	JOHN LOTSHAW				50	10/15/21	JOHN LOTSHAW	
51	10/15/21	JOHN LOTSHAW				52	10/15/21	JOHN LOTSHAW	
53	10/15/21	JOHN LOTSHAW				54	10/15/21	JOHN LOTSHAW	
55	10/15/21	JOHN LOTSHAW				56	10/15/21	JOHN LOTSHAW	
57	10/15/21	JOHN LOTSHAW				58	10/15/21	JOHN LOTSHAW	
59	10/15/21	JOHN LOTSHAW				60	10/15/21	JOHN LOTSHAW	
61	10/15/21	JOHN LOTSHAW				62	10/15/21	JOHN LOTSHAW	
63	10/15/21	JOHN LOTSHAW				64	10/15/21	JOHN LOTSHAW	
65	10/15/21	JOHN LOTSHAW				66	10/15/21	JOHN LOTSHAW	
67	10/15/21	JOHN LOTSHAW				68	10/15/21	JOHN LOTSHAW	
69	10/15/21	JOHN LOTSHAW				70	10/15/21	JOHN LOTSHAW	
71	10/15/21	JOHN LOTSHAW				72	10/15/21	JOHN LOTSHAW	
73	10/15/21	JOHN LOTSHAW				74	10/15/21	JOHN LOTSHAW	
75	10/15/21	JOHN LOTSHAW				76	10/15/21	JOHN LOTSHAW	
77	10/15/21	JOHN LOTSHAW				78	10/15/21	JOHN LOTSHAW	
79	10/15/21	JOHN LOTSHAW				80	10/15/21	JOHN LOTSHAW	
81	10/15/21	JOHN LOTSHAW				82	10/15/21	JOHN LOTSHAW	
83	10/15/21	JOHN LOTSHAW				84	10/15/21	JOHN LOTSHAW	
85	10/15/21	JOHN LOTSHAW				86	10/15/21	JOHN LOTSHAW	
87	10/15/21	JOHN LOTSHAW				88	10/15/21	JOHN LOTSHAW	
89	10/15/21	JOHN LOTSHAW				90	10/15/21	JOHN LOTSHAW	
91	10/15/21	JOHN LOTSHAW				92	10/15/21	JOHN LOTSHAW	
93	10/15/21	JOHN LOTSHAW				94	10/15/21	JOHN LOTSHAW	
95	10/15/21	JOHN LOTSHAW				96	10/15/21	JOHN LOTSHAW	
97	10/15/21	JOHN LOTSHAW				98	10/15/21	JOHN LOTSHAW	
99	10/15/21	JOHN LOTSHAW				100	10/15/21	JOHN LOTSHAW	

NOTES:

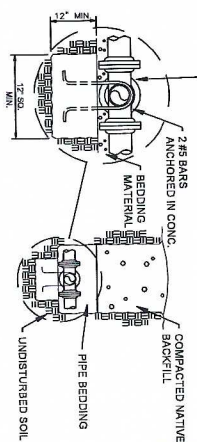
FOR THRUST RESTRAINT CONTRACTORS SHALL USE EITHER "STANDARD" OR "MODIFIED" TYPE RESTRAINTS. CONTRACTORS SHALL BE RESPONSIBLE FOR THE PROPER INSTALLATION OF THE RESTRAINTS. CONTRACTORS SHALL BE RESPONSIBLE FOR THE PROPER INSTALLATION OF THE RESTRAINTS.

CONCRETE THRUST RESTRAINT SHALL ONLY BE USED WHEN SPECIFICALLY APPROVED BY THE WATER COMPANY. CONCRETE THRUST RESTRAINT SHALL ONLY BE USED WHEN SPECIFICALLY APPROVED BY THE WATER COMPANY. CONCRETE THRUST RESTRAINT SHALL ONLY BE USED WHEN SPECIFICALLY APPROVED BY THE WATER COMPANY.



PLAN - THRUST BLOCK

DETAIL - DEAD END



SECTION AA

THRUST BLOCK BEARING AREA IN SQ. FT.											
PIPE DIA.	THRUST	PIPE DIA.	THRUST	PIPE DIA.	THRUST	PIPE DIA.	THRUST	PIPE DIA.	THRUST	PIPE DIA.	THRUST
4	2.4	6	5.4	8	9.6	10	12.0	12	14.4	14	16.8
16	62.4	18	81.0	20	100.8	22	120.6	24	140.4	26	160.2
28	235.2	30	270.0	32	307.2	34	343.8	36	380.4	38	417.0
40	480.0	42	529.2	44	578.4	46	627.6	48	676.8	50	726.0
52	950.4	54	1011.6	56	1072.8	58	1134.0	60	1195.2	62	1256.4
64	1536.0	66	1608.6	68	1681.2	70	1753.8	72	1826.4	74	1899.0
76	2145.6	78	2230.2	80	2314.8	82	2399.4	84	2484.0	86	2568.6
88	2779.2	90	2877.0	92	2974.8	94	3072.6	96	3170.4	98	3268.2
100	3384.0	102	3493.8	104	3603.6	106	3713.4	108	3823.2	110	3933.0
112	3957.6	114	4078.2	116	4198.8	118	4319.4	120	4440.0	122	4560.6
124	4545.6	126	4676.4	128	4807.2	130	4938.0	132	5068.8	134	5199.6
136	4749.6	138	4882.2	140	5014.8	142	5147.4	144	5280.0	146	5412.6
148	4960.8	150	5105.4	152	5241.0	154	5376.6	156	5512.2	158	5647.8
160	5179.2	162	5325.8	164	5471.4	166	5617.0	168	5762.6	170	5908.2
172	5404.8	174	5562.6	176	5720.4	178	5878.2	180	6036.0	182	6193.8
184	5636.4	186	5806.2	188	5976.0	190	6145.8	192	6315.6	194	6485.4
196	5874.0	198	6055.8	200	6237.6	202	6418.2	204	6598.8	206	6779.4
208	6117.6	210	6309.0	212	6490.4	214	6671.8	216	6853.2	218	7034.6
220	6367.2	222	6568.2	224	6769.2	226	6969.2	228	7169.2	230	7369.2
232	6623.2	234	6834.2	236	7070.2	238	7270.2	240	7470.2	242	7670.2
244	6885.2	246	7106.2	248	7331.2	250	7556.2	252	7781.2	254	8006.2
256	7153.2	258	7394.2	260	7626.2	262	7856.2	264	8086.2	266	8316.2
268	7427.2	270	7678.2	272	7908.2	274	8138.2	276	8368.2	278	8598.2
280	7707.2	282	7968.2	284	8208.2	286	8438.2	288	8668.2	290	8898.2
292	7993.2	294	8264.2	296	8498.2	298	8728.2	300	8958.2	302	9188.2
304	8285.2	306	8556.2	308	8826.2	310	9056.2	312	9286.2	314	9516.2
316	8583.2	318	8864.2	320	9156.2	322	9406.2	324	9656.2	326	9906.2
328	8887.2	330	9178.2	332	9466.2	334	9716.2	336	9966.2	338	10216.2
340	9197.2	342	9498.2	344	9776.2	346	10026.2	348	10276.2	350	10526.2
352	9513.2	354	9824.2	356	10136.2	358	10386.2	360	10636.2	362	10886.2
364	9835.2	366	10146.2	368	10446.2	370	10696.2	372	10946.2	374	11196.2
376	10163.2	378	10474.2	380	10756.2	382	11006.2	384	11256.2	386	11506.2
388	10497.2	390	10808.2	392	11066.2	394	11316.2	396	11566.2	398	11816.2
400	10837.2	402	11148.2	404	11426.2	406	11676.2	408	11926.2	410	12176.2
412	11183.2	414	11494.2	416	11786.2	418	12036.2	420	12286.2	422	12536.2
424	11535.2	426	11846.2	428	12146.2	430	12396.2	432	12646.2	434	12896.2
436	11893.2	438	12204.2	440	12456.2	442	12706.2	444	12956.2	446	13206.2
448	12257.2	450	12568.2	452	12766.2	454	13016.2	456	13266.2	458	13516.2
460	12627.2	462	12938.2	464	13126.2	466	13376.2	468	13626.2	470	13876.2
472	13003.2	474	13314.2	476	13486.2	478	13736.2	480	13986.2	482	14236.2
484	13385.2	486	13696.2	488	13896.2	490	14146.2	492	14396.2	494	14646.2
496	13773.2	498	14084.2	500	14296.2	502	14546.2	504	14796.2	506	15046.2
508	14167.2	510	14478.2	512	14676.2	514	14926.2	516	15176.2	518	15426.2
520	14567.2	522	14878.2	524	15076.2	526	15326.2	528	15576.2	530	15826.2
532	14973.2	534	15284.2	536	15486.2	538	15736.2	540	15986.2	542	16236.2
544	15385.2	546	15696.2	548	15896.2	550	16146.2	552	16396.2	554	16646.2
556	15803.2	558	16114.2	560	16316.2	562	16566.2	564	16816.2	566	17066.2
568	16227.2	570	16538.2	572	16736.2	574	16986.2	576	17236.2	578	17486.2
580	16657.2	582	16968.2	584	17166.2	586	17416.2	588	17666.2	590	17916.2
592	17093.2	594	17404.2	596	17606.2	598	17856.2	600	18106.2	602	18356.2
604	17535.2	606	17846.2	608	18046.2	610	18296.2	612	18546.2	614	18796.2
616	17983.2	618	18294.2	620	18496.2	622	18746.2	624	18996.2	626	19246.2
628	18437.2	630	18748.2	632	18946.2	634	19196.2	636	19446.2	638	19696.2
640	18897.2	642	19208.2	644	19406.2	646	19656.2	648	19906.2	650	20156.2
652	19363.2	654	19674.2	656	19876.2	658	20126.2	660	20376.2	662	20626.2
664	19835.2	666	20146.2	668	20346.2	670	20596.2	672	20846.2	674	21096.2
676	20313.2	678	20624.2	680	20826.2	682	21076.2	684	21326.2	686	21576.2
688	20797.2	690	21108.2	692	21306.2	694	21556.2	696	21806.2	698	22056.2
700	21287.2	702	21598.2	704	21796.2	706	22046.2	708	22296.2	710	22546.2
712	21783.2	714	22094.2	716	22296.2	718	22546.2	720	22796.2	722	23046.2
724	22285.2	726	22596.2	728	22796.2	730	23046.2	732	23296.2	734	23546.2
736	22793.2	738	23104.2	740	23306.2	742	23556.2	744	23806.2	746	24056.2
748	23307.2	750	23618.2	752	23816.2	754	24066.2	756	24316.2	758	24566.2
760	23827.2	762	24138.2	764	24336.2	766	24586.2	768	24836.2	770	25086.2
772	24353.2	774	24664.2	776	24866.2	778	25116.2	780	25366.2	782	25616.2
784	24885.2	786	25196.2	788	25396.2	790	25646.2	792	25896.2	794	26146.2
796	25423.2	798	25734.2	800	25936.2	802	26186.2	804	26436.2	806	26686.2
808	25967.2	810	26278.2	812	26480.2	814	26730.2	816	26980.2	818	27230.2
820	26517.2	822	26828.2	824	27032.2	826	27282.2	828	27532.2	830	27782.2
832	27073.2	834	27384.2	836	27586.2	838	27836.2	840	28086.2	842	28336.2
844	27635.2	846	27946.2	848	28146.2	850	28396.2	852	28646.2	854	28896.2
856	28203.2	858	28514.2	860	28716.2	862	28966.2	864	29216.2	866	29466.2
868	28777.2	870	29088.2	872	29290.2	874	29540.2	876	29790.2	878	30040.2
880	29357.2	882	29668.2	884	29870.2	886	30120.2	888	30370.2	890	30620.2
892	29943.2	894	30254.2	896	30456.2	898	30706.2	900	30956.2	902	31206.2
904	30535.2	906	30846.2	908	31046.2	910	31296.2	912	31546.2	914	31796.2
916	31133.2	918	31444.2	920	31646.2	922	31896.2	924	32146.2	926	32396.2
928	31737.2	930	32048.2	932	32250.2	934	32500.2	936	32750.2	938	33000.2
940	32347.2	942	32658.2	944	32860.2	946	33110.2	948	33360.2	950	33610.2
952	32963.2	954	33274.2	956	33476.2	958	33726.2	960	33976.2	962	34226.2
964	33585.2	966	33896.2	968	34096.2	970	34346.2	972	34596.2	974	34846.2
976	34213.2	978	34524.2	980	34726.2	982	34976.2	984	35226.2	986	35476.2
988	34847.2	990	35158.2	992	35360.2	994	35610.2	996	35860.2	998	36110.2
1000	35487.2	1002	35798.2	1004	35996.2	1006	36246.2	1008	36496.2	1010	36746.2
1012	36133.2	1014	36444.2	1016	36646.2	1018	36896.2	1020	37146.2	1022	37396.2
1024	36785.2	1026	37096.2	1028	37296.2	1030	37546.2	1032	37796.2	1034	38046.2
1036	37443.2	1038	37754.2	1040	37956.2	1042	38206.2	1044	38456.2	1046	38706.2
1048	38107.2	1050	38418.2	1052	38620.2	1054	38870.2	1056	39120.2	1058	39370.2
1060	38777.2	1062	39088.2	1064	39290.2	1066	39540.2	1068	39790.2	1070	40040.2
1072	39453.2	1074	39764.2	1076	39966.2	1078	40216.2	1080	40466.2	1082	40716.2
1084	40135.2	1086	40446.2	1088	40646.2	1090	40896.2	1092	41146.2	1094	41396.2
1096	40823.2	1098	41134.2	1100	41336.2	1102	41586.2	1104	41836.2	1106	42086.2
1108	41517.2	1110	41828.2	1112	42030.2	1114	42280.2	1116	42530.2	1118	42780.2
1120	42217.2	1122	42528.2	1124	42730.2	1126	42980.2	1128	43230.2	1130	43480.2
1132	42923.2	1134	43234.2	1136	43436.2	1138	43686.2	1140	43936.2	1142	44186.2