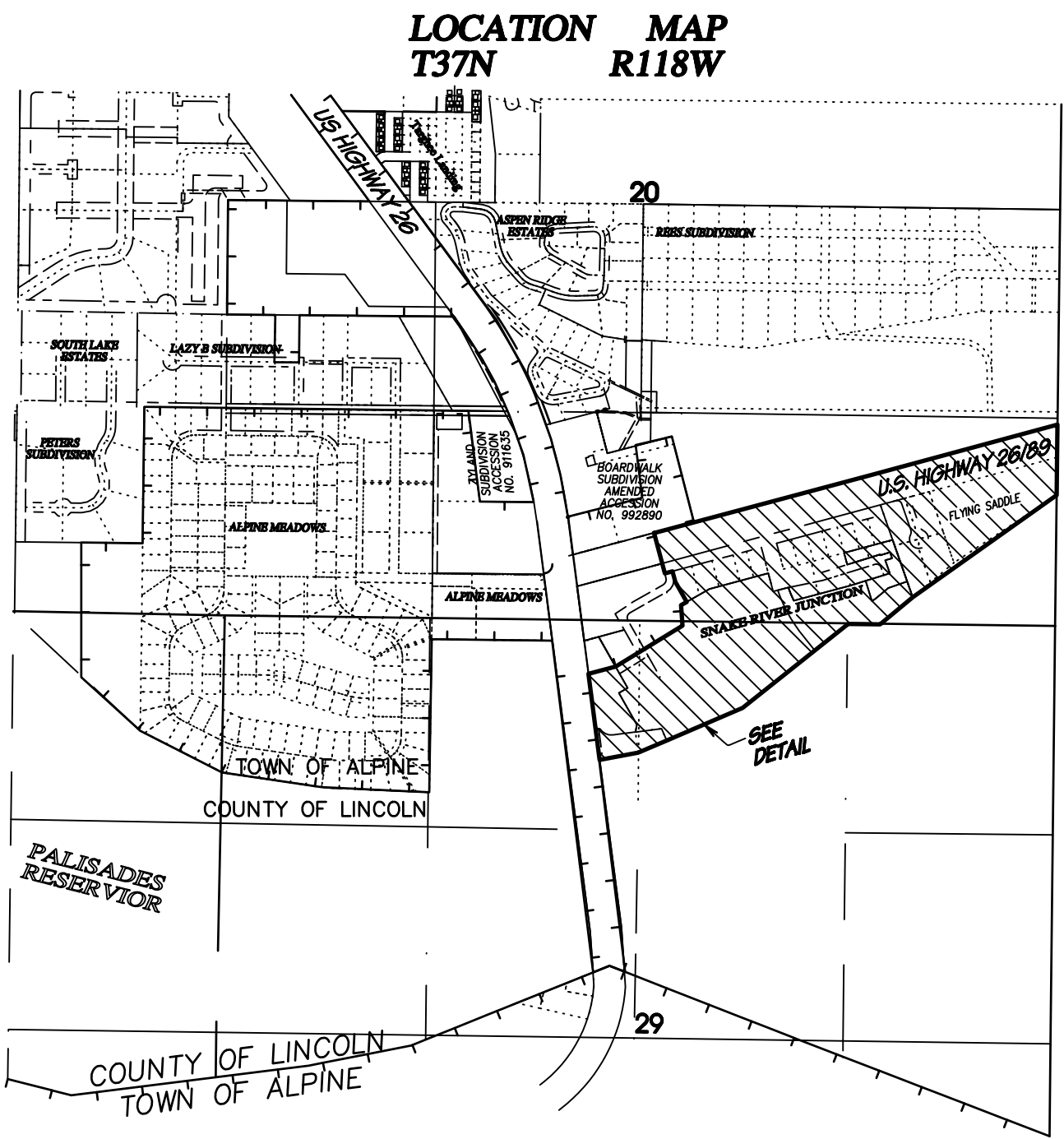
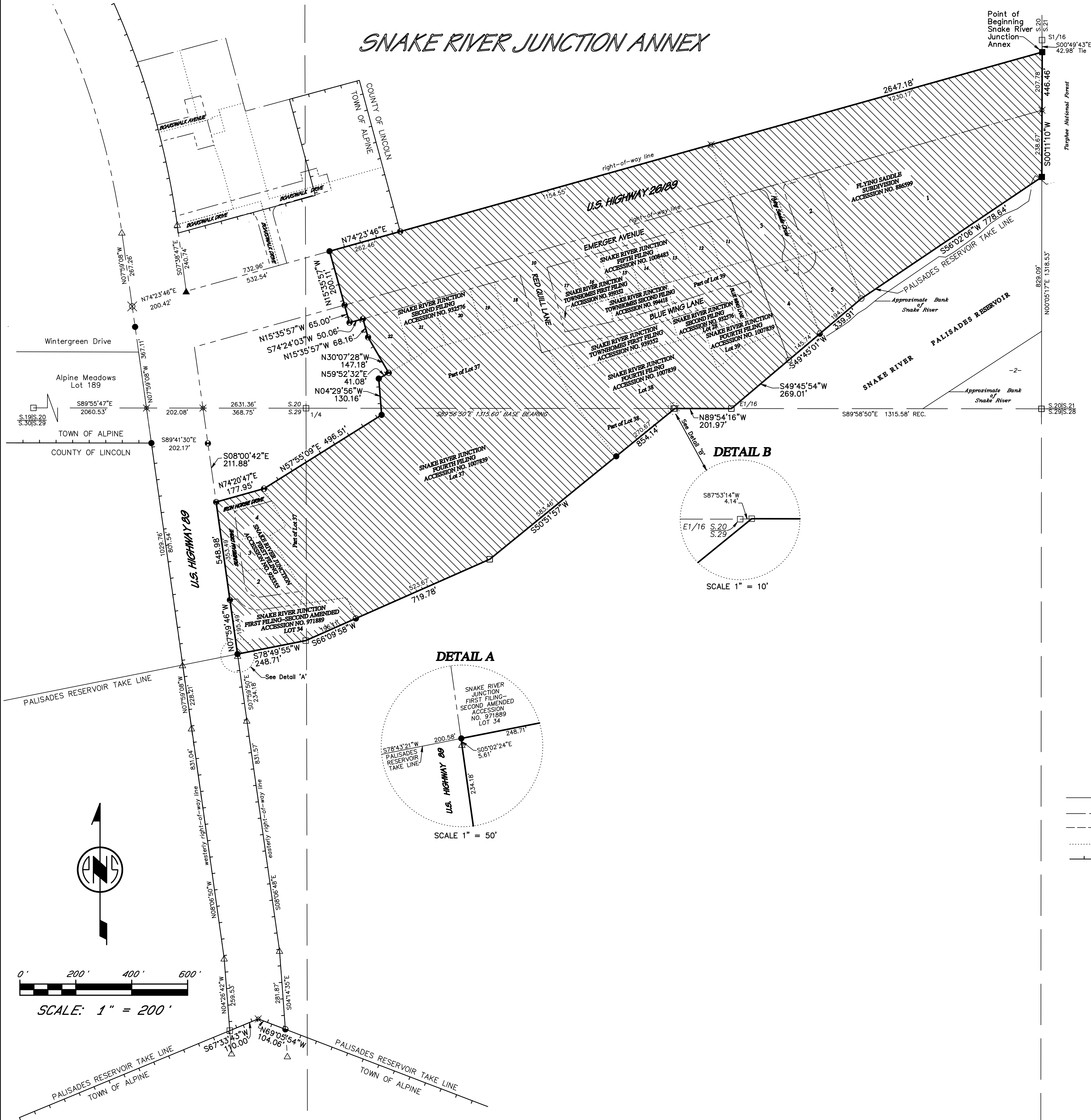


Snake River Junction Annex



LEGEND

- Indicates a corner record on file in the office of the Clerk of Lincoln County.
- Indicates a 1" galvanized steel pipe with brass cap inscribed "U.S. Bureau of Reclamation penalty \$250 for removal 19\_\_", found, amended by a 2" galvanized steel pipe 28" long (BLM type) with brass cap inscribed: "Paul N. Scherbel PLS164 Big Piney Wyoming 1994", found.
- Indicates a 2" galvanized steel pipe with brass cap inscribed: "Paul N. Scherbel PLS164 Big Piney Wyoming 1994" found for WYDOT right-of-way marker.
- Indicates 1" galvanized steel pipe with brass cap inscribed: "U.S. Bureau of Reclamation penalty \$250 for removal 19\_\_", found.
- Indicates a 5/8" x 24" steel reinforcing rod with a 2" aluminum cap inscribed, "SURVEYOR SCHERBEL LTD.", and other details, set.
- Indicates a 5/8" x 24" steel reinforcing rod, with aluminum cap inscribed: "Surveyor Scherbel Ltd PLS164 Big Piney WY" and other details, found.
- Indicates a 5/8" steel reinforcing rod with 2" diameter aluminum cap inscribed, "JORGENSEN ASSOCIATES PE&LS 2612" or "PLS 9007", found or of record.
- Indicates a calculated position, no monument found or set.
- Indicates an existing septic system.
- Indicates a water well.
- Indicates the bank of the Snake River.
- Indicates a right-of-way line.
- Indicates a utility easement.
- Indicates record lot lines.
- Indicates boundary of the Town of Alpine.

The base bearing for this survey is the south line of the SE1/4 of section 20, T37N, R118W, being S89°56'50"E.

CERTIFICATE OF RECORDATION

This plat was filed for record in the Office of the Clerk of Lincoln County on this \_\_\_ day of \_\_\_, 2024.

April Bruncki, Clerk

CERTIFICATE OF SURVEYOR

STATE OF WYOMING }  
COUNTY OF LINCOLN } ss..

I, Karl F. Scherbel of Afton, Wyoming, hereby certify that this plat was made from notes taken during an actual survey made by me and persons under my supervision during October 2024, and from records in the Office of the Clerk of Lincoln County and that it correctly represents **Snake River Junction Annexation** as shown;

that the boundary of the annexation is:

That part of the S1/2 of Section 20, and that part of the N1/2 of Section 29, T37N R118W, Lincoln County, Wyoming, described as follows including Snake River Junction First Filing, Snake River Junction Second Filing, Snake River Junction Third Filing, Snake River Junction Fourth Filing, Snake River Junction Fifth Filing, Snake River Junction Townhomes First Filing, Snake River Junction Townhomes Second Filing, Flying Saddle Subdivision and part of U.S. Highway 26/89;

COMMENCING at the northeast corner of said S1/2 of Section 20, S00°49'43"E, 42.98 feet, to the northeasterly most point;

thence S00°11'10"W, 446.46 feet, along the east line of said S1/2 to a point on Palisades Reservoir Take Line;

thence along said Palisades Reservoir Take Line as follows:

S56°02'06"W, 778.64 feet, to a point;

S49°45'01"W, 339.91 feet, to a point;

S49°45'54"W, 269.01 feet, to a corner on the south line on said S1/2;

N89°54'16"W, 201.97 feet, along said south line to a corner;

S50°51'57"W, 854.14 feet, to a point;

S86°09'58"W, 719.78 feet, to a point;

S78°49'55"W, 248.71 feet, to a point on the easterly right-of-way line of U.S. Highway 89 and leaving said Take Line;

thence N07°59'46"W, 548.98 feet, along said right-of-way line to a point;

thence N74°20'47"E, 177.95 feet, to a point;

thence N57°55'09"E, 496.51 feet, to a point;

thence N04°29'56"W, 130.16 feet, to a point;

thence N59°52'32"E, 41.08 feet, to a point;

thence N30°07'28"W, 147.18 feet, to a point;

thence N15°35'57"W, 68.16 feet, to a point;

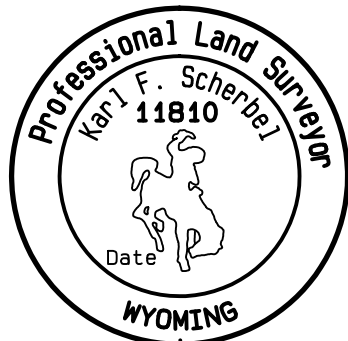
thence S74°24'03"W, 50.06 feet, to a point;

thence N15°35'57"W, 65.00 feet, to a point on the southerly right-of-way line of U.S. highway 26/89;

thence N15°35'57"W, 200.11 feet, to a point on the northerly right-of-way line of U.S. Highway 26/89;

thence N74°23'46"E, 264.17 feet, along said northerly right-of-way line to the CORNER OF BEGINNING.

ENCOMPASSING an area of 58.74 Acres, more or less.



The foregoing instrument was acknowledged before me by Karl F. Scherbel this \_\_\_ day of \_\_\_, 2024.

Witness my hand and official seal.

Notary Public

CERTIFICATE OF ACCEPTANCE

STATE OF WYOMING }  
COUNTY OF LINCOLN } ss.

It is certified that the **Snake River Junction Annexation** was approved by Ordinance No. \_\_\_\_\_

Signed and dated at Alpine, Wyoming on \_\_\_ day of \_\_\_, 2024.

Attest: \_\_\_\_\_  
Town of Alpine

Monica Chenault, Clerk      Eric Green, Mayor

PLAT TO ACCOMPANY  
ORDINANCE NO. \_\_\_\_\_  
SNAKE RIVER JUNCTION ANNEXATION  
TO THE TOWN OF ALPINE  
WITHIN THE

S1/2      SECTION 20  
N1/2      SECTION 29  
T37N      R118W  
LINCOLN COUNTY, WYOMING

DATE:	19 September 2024
DRAWN BY:	Clint A. Phillips
CALCULATED BY:	Karl F. Scherbel
CATEGORY/PORT:	Town/Snake River Junction Annex
FIELD BOOK:	
COMPUTER FILE:	SnakeRiverJunctionAnnex.pro



**SURVEYOR SCHERBEL, LTD.**  
PROFESSIONAL LAND SURVEYORS

BOX 96 BIG PINEY-MARLBLETON, WYO. 83419 TEL. 307-276-3347  
BOX 725 AFTON, WYO. 83410 TEL. 307-285-9319 ALPINE, WYO. 83428 TEL. 307-285-9319  
JACKSON, WYO. TEL. 307-233-5903; LAVA, ID. TEL. 208-776-5930; MONTPELIER, ID. TEL. 208-847-2800

