

Legend:



MINOR CONSTRUCTION
PERMIT PROCESS
R2, MRC, & C
EXTERIOR ONLY

Submits a Fully Completed DRC Application
with All Required Documents and Fees to
Design Review Committee Secretary

Review Submitted Materials & Evaluate the
Application for Completeness & Compliance

Approve or Deny

Recommendation
Submitted to Zoning
Administrator

Submits a Fully Completed Sign
Permit Application with All
Required Documents and Fees to
Zoning Administrator

Site Plan Review & Evaluate the Application
for Completeness and Compliance

Submit Application to
Building Official

Review Submitted Materials &
Evaluate the Application for
Completeness & Compliance

Approve or Deny

Can Appeal Decision to
Town Council

Refer to Part 5:
(Appeals & Enforcement)



Issue
Minor Construction Permit

Complete Construction

Complete Final Site Inspection

Issue Certificate of Completion

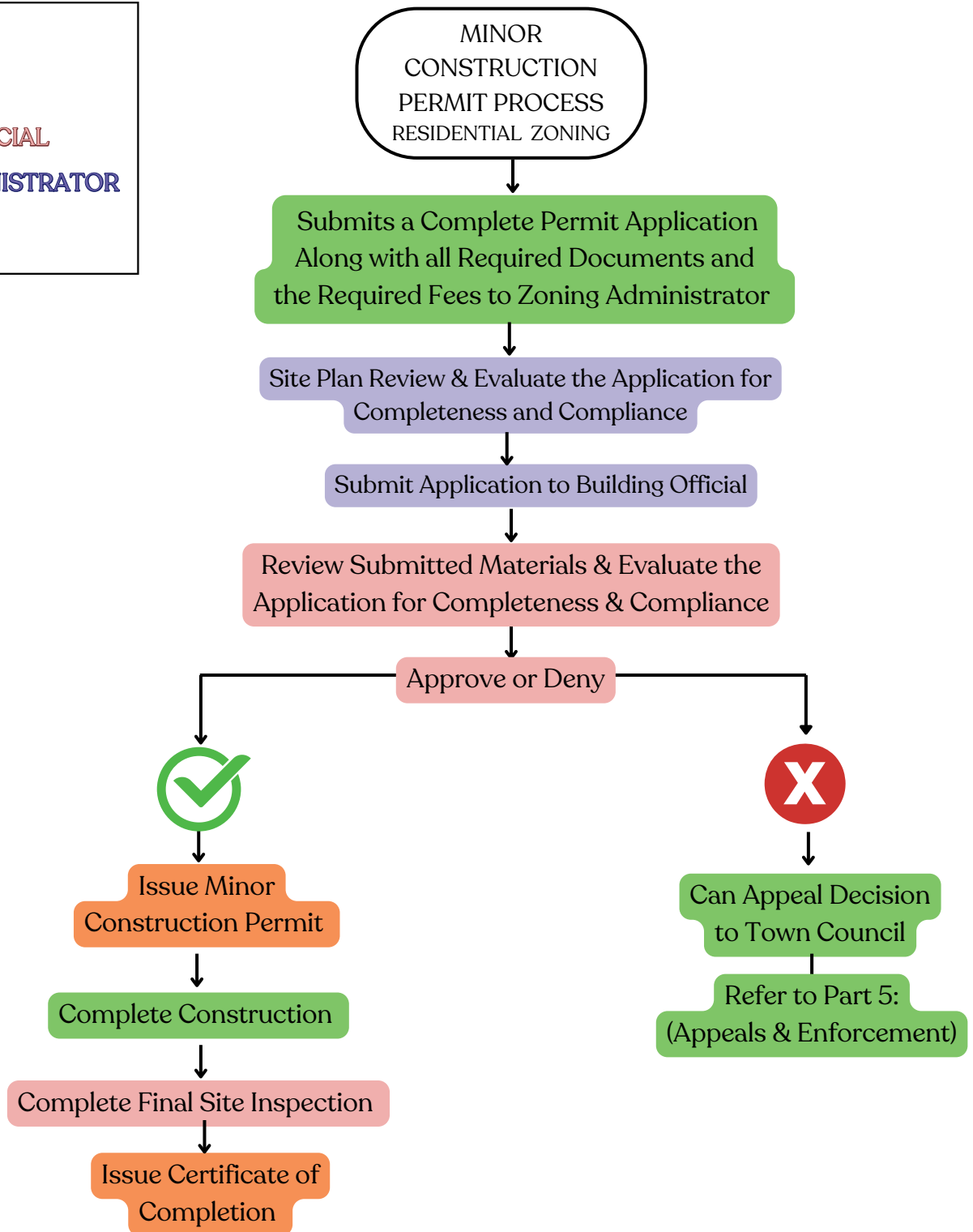


Land Use and
Development Code

MINOR CONSTRUCTION R2, MRC, & C ZONING: EXTERIOR

Figure 2-9

Legend:



ALPINE
WYOMING

Land Use and
Development Code

MINOR CONSTRUCTION RESIDENTIAL ZONING

Figure 2-9

Town of Alpine Land Use and Development Code
2025 FINAL CHANGES

Page 42