



# City of Algona

## 2024 Annual Budget



200 Washington Blvd.

(253) 833-2897

[algonawa.gov](http://algonawa.gov)

# Table of Contents

Mayor’s Budget Message.....	3
Elected Officials.....	5
Administrative Staff .....	5
Organizational Chart .....	6
Budget Development Process.....	7
Budget Calendar.....	8
Budget Principles .....	9
City-Wide Budget Summary.....	11
Historical Staffing.....	12
Wage Scale .....	13
Indirect Cost Allocation.....	14
Equipment Replacement Plan.....	17
General Fund.....	18
Street Fund.....	19
Utility Funds .....	20
Remaining Funds.....	23

# Mayor's Budget Message

October 16, 2023

Dear City Councilmembers,

I am pleased to submit for your consideration the 2024 proposed annual budget for the City of Algona. Proposed 2024 appropriations compared to budgeted 2023 appropriations (through 2023 budget amendment #1) are as follows:

<b>Fund</b>	<b>2023 Budget (Amended)</b>	<b>2024 Proposed Budget</b>	<b>Increase (Decrease)</b>	<b>% Change</b>
General	3,286,760	3,257,189	(29,571)	-1%
Drug	2,200	-	(2,200)	-100%
Street	401,900	311,700	(90,200)	-22%
Rainy Day Fund	-	-	-	--
Capital Improvement	315,000	315,000	-	0%
Park Impact	-	-	-	--
General Obligation Bond	319,000	318,300	(700)	0%
Stormwater Management	327,300	393,800	66,500	20%
Water Maintenance	812,950	830,200	17,250	2%
Sewer Maintenance	1,242,350	1,142,900	(99,450)	-8%
Water Capital Improvement	564,000	-	(564,000)	-100%
Sewer Capital Improvement	-	-	-	--
Stormwater Capital Improvement	400,000	-	(400,000)	-100%
Equipment Replacement Fund	126,800	100,000	(26,800)	-21%
Unemployment Trust	-	-	-	--
Explorers Program	-	-	-	--
<b>Total Expenditures and Other Uses</b>	<b>7,798,260</b>	<b>6,669,089</b>	<b>(1,129,171)</b>	<b>-14%</b>

The total 2024 proposed budget is significantly lower than the 2023 budget due to utility capital projects included in the 2023 budget but not the 2024 budget.

Estimated 2024 resources compared to 2023 estimated resources are as follows:

<b>Fund</b>	<b>2023 Budget (Amended)</b>	<b>2024 Proposed Budget</b>	<b>Increase (Decrease)</b>	<b>% Change</b>
General	3,143,610	3,123,630	(19,980)	-1%
Drug	1,000	1,000	-	0%
Street	401,900	311,700	(90,200)	-22%
Rainy Day Fund	-	20,000	20,000	--
Capital Improvement	100,000	100,000	-	0%
Park Impact	36,000	36,000	-	0%
General Obligation Bond	315,000	315,000	-	0%
Stormwater Management	447,000	469,200	22,200	5%
Water Maintenance	899,000	911,900	12,900	1%
Sewer Maintenance	1,312,000	1,326,000	14,000	1%
Water Capital Improvement	297,100	85,000	(212,100)	-71%
Sewer Capital Improvement	-	35,000	35,000	--
Stormwater Capital Improvement	300,000	20,000	(280,000)	-93%
Equipment Replacement Fund	124,200	115,100	(9,100)	-7%
Unemployment Trust	-	-	-	--
Explorers Program	-	-	-	--
<b>Total Revenues and Other Sources</b>	<b>7,376,810</b>	<b>6,869,530</b>	<b>(507,280)</b>	<b>-7%</b>

The 2024 estimated resources are significantly lower than in 2023 due to the following factors:

- A decrease in projected sales tax and building/planning fees.
- The 2024 Street Fund budget reflects a decreased subsidy from the General Fund.
- Capital improvement funds included grant funding in 2023.

Sincerely,

*Troy Linnell, Mayor*

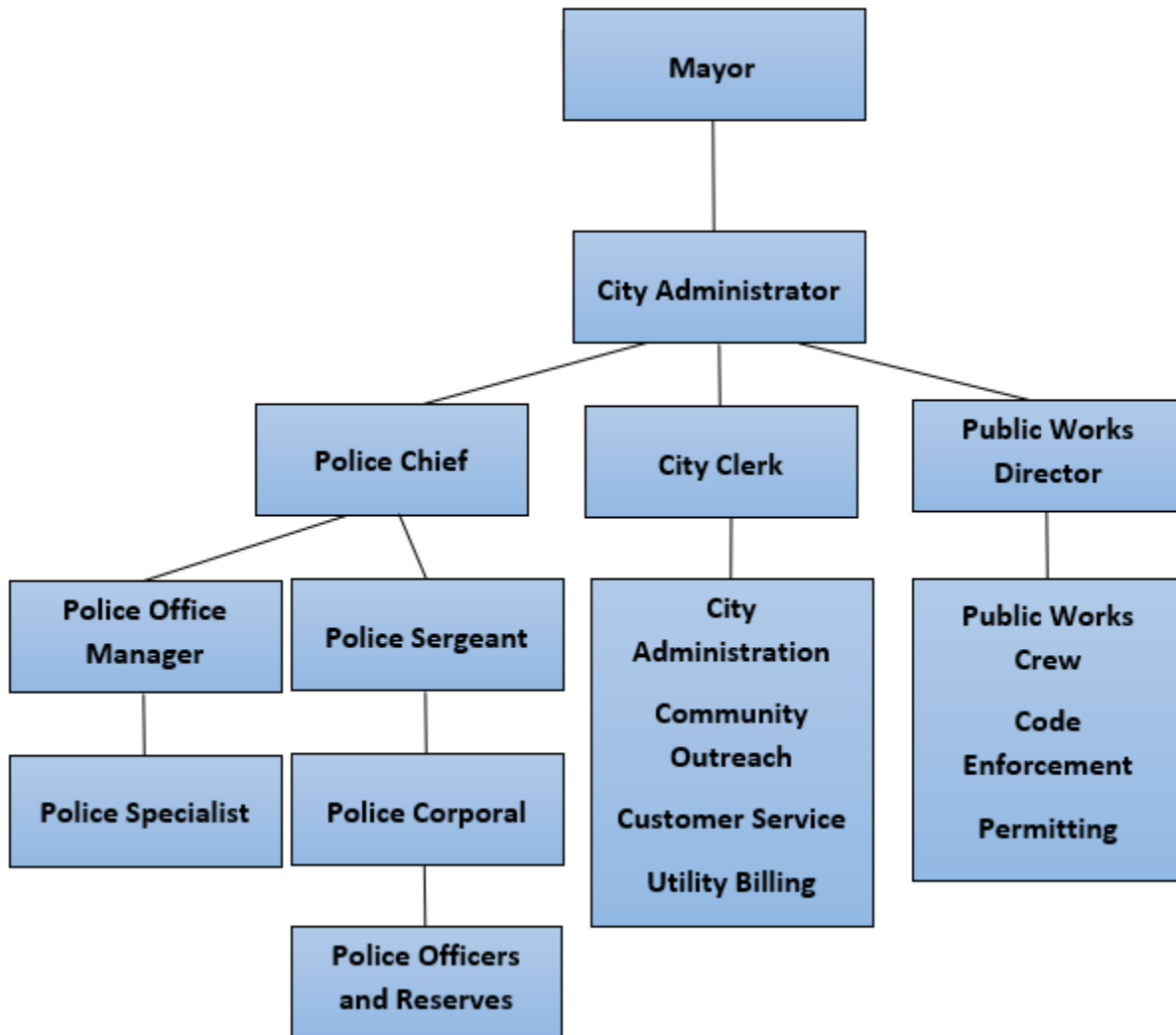
# Elected Officials

		<u>Term Expires:</u>
Troy Linnell	Mayor	December 31, 2023
Bill Thomas	Council Position #1	December 31, 2023
Lynda Osborn	Council Position #2	December 31, 2025
Tim Fairley	Council Position #3	December 31, 2023
Gordon Cook	Council Position #4	December 31, 2025
Brenna Franco	Mayor Pro-Tem Council Position #5	December 31, 2023

# Administrative Staff

Jessica Griess	City Administrator
James Schrimpsher	Police Chief
Russ Avery	Public Works Director

# Organizational Chart



# Budget Development Process

The budget includes the financial planning and legal authority to obligate public funds. Additionally, the budget provides policy direction by the City Council to the staff and community.

The budget serves four functions:

## **It is a Policy Document**

The budget functions as a policy document in that the decisions made within the budget will reflect the general principles or plans that guide the actions taken for the future. As a policy document, the budget makes specific attempts to link desired goals and policy direction to the actual day-to-day activities of the City staff.

## **It is an Operational Guide**

The budget of the City reflects its operations. Activities of each City fund or department have been planned, formalized and described in the following sections. This process will help to maintain an understanding of the various operations of the City and how they related to each other and to the attainment of the policy issues and goals of the City Council.

## **It is a Link with the General Public**

The budget provides a unique opportunity to allow and encourage public review of City operations. The budget describes the activities of the City, the purpose of those activities, future implications, and the direct relationship to citizens.

## **It is a Legally Required Financial Planning Tool**

Preparing and adopting a budget is a state law requirement of all cities as stated in Title 35A of the Revised Code of Washington (RCW). The budget must be adopted as a balanced budget and must be in place prior to the beginning of the City's fiscal year. The budget is the legal authority to expend public funds and controls those expenditures by limiting the amount of appropriation at the fund level. The revenues of the City are estimated, along with available cash carry-forward, to determine funds available.

The City of Algona operates on a calendar-year basis. The City utilizes an incremental budgeting approach that assumes, for most functions of government, that the current year's budget is indicative of the base required for the following year. Any increases are incremental and based on need defined by budget policies, emerging issues, Council goals and available resources.

# Budget Calendar

**August 21, 2023** – preliminary estimates due from directors

**September 25, 2023** – preliminary revenue estimates presented to Council

**October 16, 2023** – Mayor’s proposed budget presented to Council

**November 13, 2023** – public hearing on revenue sources; public hearing on preliminary budget; first reading of tax levy ordinance

**November 27, 2023** – public hearing on final budget; first reading of budget ordinance; second (final) reading of tax levy ordinance.

**December 11, 2023** – second (final) reading of budget ordinance/budget adoption.

After the budget is adopted, the City enters a budget implementation and monitoring stage. Throughout the year, expenditures are monitored by the City Administrator and department directors to ensure that funds are within the approved budget. As required by RCW 35A.33.140, the City Administrator provides the City Council with quarterly reports to keep them current with the City’s financial condition.

The Mayor is authorized to transfer budgeted amounts within a fund; however, any revisions that alter the total expenditures of a fund, or that affect the number of authorized employee positions, position titles, salary ranges or other conditions of employment must be approved by the City Council.

When the City Council determines that it is in the best interest of the City to increase or decrease the appropriation for a fund, it may do so by ordinance adopted by Council.



# Budget Principles

## General Principles

- Department directors have primary responsibility for formulating budget proposals in line with City Council and Mayor directions, and for implementing them once they are approved.
- The City Administrator is responsible for coordinating the overall preparation and administration of the City's budget. This function is fulfilled in compliance with applicable State of Washington statutes governing local government budgeting practices.
- The City Administrator assists department staff in identifying budget problems, formulating solutions and alternatives, and implementing any necessary corrective actions.
- Interfund charges will be based on recovery of costs associated with providing those services.
- Budget adjustments requiring City Council approval will occur through the ordinance process at the fund level prior to the end of the fiscal year.
- The City's budget presentation will be directed at displaying the City's budget in a Council and Citizen-friendly format.

## Minimum Fund Balances

- The General Fund budget should be such that the budgeted ending fund balance is at least 10% of budgeted expenditures.

## Rainy Day Fund

- The balance in the Rainy Day fund should be, at a minimum, 10% of budgeted General Fund expenditures.

## Basis of Accounting

- Annual appropriated budgets are adopted for all funds on the cash basis of accounting.
- Budgets are adopted at the fund level that constitutes legal authority for expenditures. Annual appropriations lapse at the end of the fiscal period.
- The **General Fund** is the primary fund of the City. It accounts for all financial resources except those required or elected to be accounted for in another fund.
- **Special Revenue Funds** account for revenue sources that are legally restricted or designated to finance certain activities. Special revenue funds include the following:

\*Drug Fund

\*Street Fund

\*Rainy Day Fund

\*Park Impact Fee Fund

\*Capital Improvement (Real Estate Excise Tax) Fund

- The **Debt Service Fund** accounts for principal and interest payments on long-term debt, related to financing of the City Hall/Community Center.
- **Enterprise Funds** account for operations that provide goods and services to the general public and are supported primarily by user charges. Enterprise funds include the following:
  - \*Stormwater Management      \*Water Maintenance      \*Sewer Maintenance
  - \*Stormwater Capital      \*Water Capital      \*Sewer Capital
- The Equipment Replacement **Internal Service Fund** accounts for funding and replacement of vehicles and major equipment.

# City-Wide Budget Summary

<u>Fund</u>	<u>Beginning Fund Balance</u>	<u>Revenues</u>	<u>Expenditures</u>	<u>Increase (Decrease)</u>	<u>Ending Fund Balance</u>
General	1,069,693	3,123,630	3,257,189	(133,559)	936,134
Drug	6,677	1,000	-	1,000	7,677
Street	134,636	311,700	311,700	-	134,636
Rainy Day Fund	345,174	20,000	-	20,000	365,174
Capital Improvement	219,826	100,000	315,000	(215,000)	4,826
Park Impact	208,500	36,000	-	36,000	244,500
General Obligation Bond	3,764	315,000	318,300	(3,300)	464
Stormwater Management	843,746	469,200	393,800	75,400	919,146
Water Maintenance	1,225,354	911,900	830,200	81,700	1,307,054
Sewer Maintenance	823,118	1,326,000	1,142,900	183,100	1,006,218
Water Capital Improvement	688,165	85,000	-	85,000	773,165
Sewer Capital Improvement	389,266	35,000	-	35,000	424,266
Stormwater Capital Improvement	249,877	20,000	-	20,000	269,877
Equipment Replacement Fund	757,109	115,100	100,000	15,100	772,209
Unemployment Trust	3,587	-	-	-	3,587
Explorers Program	27,417	-	-	-	27,417
<b>Total</b>	<b>6,995,908</b>	<b>6,869,530</b>	<b>6,669,089</b>	<b>200,441</b>	<b>7,196,349</b>

- Employee salaries and benefits include the following changes:
  - Cost of living (COLA) adjustments:
    - Police – 4.5%
    - Non uniform union – 0% pending settlement of contract
    - Non represented – 4.5%
  - Medical – 5.0%
  - Dental – 0%

# Historical Staffing

	Authorized Positions				
	<u>2020 Final</u>	<u>2021 Final</u>	<u>2022 Final</u>	<u>2023 (Amended)</u>	<u>2024 (Proposed)</u>
<b>Administration:</b>					
City Administrator	1	--	--	1	1
City Clerk	1	1	1	--	1
Deputy City Clerk	1	1	1	1	--
Clerical Assistant	1	1	1	1	1
Community Connector	1	1	1	1	1
Code Enforcement Officer/Permit Tech	--	--	--	1	1
Permit Technician	1	--	--	--	--
<b>Total Administration</b>	<b>6</b>	<b>4</b>	<b>4</b>	<b>5</b>	<b>5</b>
<b>Police:</b>					
Police Chief	1	1	1	1	1
Police Clerk	2	1	1	1	1
Police Sergeant	1	1	1	--	--
Police Corporal	--	--	1	1	1
Police Officer	6	6	5	7	7
Police Office Manager	--	--	--	1	1
Reserve Officer	<i>part time</i>	<i>part time</i>	<i>part time</i>	<i>part time</i>	<i>part time</i>
<b>Total Police</b>	<b>10</b>	<b>9</b>	<b>9</b>	<b>11</b>	<b>11</b>
<b>Public Works:</b>					
Public Works Director	1	1	1	1	1
Utility Superintendent	1	1	1	--	--
Utility Worker 2	1	1	1	1	--
Utility Worker 1	2	3	3	3	4
<b>Total Public Works</b>	<b>5</b>	<b>6</b>	<b>6</b>	<b>5</b>	<b>5</b>
<b>City-Wide Total</b>	<b>21</b>	<b>19</b>	<b>19</b>	<b>21</b>	<b>21</b>

# Wage Scale

<b><i>Elected Officials</i></b>	<b><u>Annual</u></b>
Mayor	35,000
Councilmembers	3,600

	<b>Annual Rates</b>				
<b><i>Non-Represented Full Time Positions</i></b>	<b><u>Step A</u></b>	<b><u>Step B</u></b>	<b><u>Step C</u></b>	<b><u>Step D</u></b>	<b><u>Step E</u></b>
Police Chief	138,248				
City Administrator	110,250				
Public Works Director	111,387				
City Clerk/Treasurer	90,350				

<b><i>Non-Represented Part Time/Temp</i></b>	<b><u>Hourly</u></b>
Police Reserve Officers	32.59
Temp EHM/Court Security	29.11

	<b>Annual Rates Per Collective Bargaining Agreement</b>				
<b><i>Represented - Non-Uniform</i></b>	<b><u>Step A</u></b>	<b><u>Step B</u></b>	<b><u>Step C</u></b>	<b><u>Step D</u></b>	<b><u>Step E</u></b>
Police Clerk	55,224	57,990	60,743	63,787	66,982
Clerical Assistant	52,678	55,307	58,073	60,978	63,731
Community Connector	68,144	71,547	75,130	78,658	82,586
Utility Superintendent	67,826	71,215	74,770	78,506	82,434
Utility Worker 1	56,524	59,277	62,237	65,350	68,615
Code Enforcement Officer/Permit Tech	67,826	71,215	74,770	78,506	82,434

	<b>Annual Rates Per Collective Bargaining Agreement</b>				
<b><i>Represented - Uniform</i></b>	<b><u>Step A</u></b>	<b><u>Step B</u></b>	<b><u>Step C</u></b>	<b><u>Step D</u></b>	<b><u>Step E</u></b>
Police Corporal	80,196	84,204	88,419	92,840	97,482
Police Officer	75,657	79,438	83,414	87,585	91,964
Police Officer Manager	80,196	84,204	88,418	92,840	97,482

# Indirect Cost Allocation

## **Background**

Indirect cost allocation is a method to determine and assign the cost of central services to the internal users of those services. Cost allocation enables local governments to more accurately account for the complete cost of the services it provides, and to provide a clear/concise method to use in budget development.

Indirect costs include central services costs related to legislative, executive, finance, legal and human resources expenses.

Cost allocation plans share indirect costs across programs, activities, funds and departments. The term “allocation” implies that there is no precise method for charging indirect costs, however cost allocations should be designed to provide a consistent, reasonable and equitable means to allocate costs.

## **Funds to Be Charged**

An indirect cost allocation plan is intended to charge restricted funds for a fair and equitable portion of central services costs. The City has two fund types that could be eligible for indirect cost allocation – special revenue funds and business-type funds.

Special revenue funds must be at least partially funded by an externally restricted or internally assigned revenue source; however, the special revenue funds can be, and many are, subsidized by the general fund. Therefore, there is no benefit to be had by including most special revenue funds in the indirect cost allocation plan (increasing expenses in funds subsidized by the general fund would simply increase the amount of general fund subsidy required).

The City’s business-type funds must be self-supporting and cannot receive general fund support in the form of subsidization or services provided at no charge. An indirect cost allocation plan is the appropriate way to charge business-type funds for services provided by the general fund. The City’s current business type funds subject to allocation are Water, Sewer and Stormwater.

The indirect cost allocation plan shall be developed based on the principle that costs will be split between general government activities (those pertaining to the general fund and special revenue funds) and business-type activities. Business-type activities will be further allocated by fund, based on the criteria described below. General government activities will remain in the general fund.

## **Costs to Be Allocated**

The following costs are subject to allocation:

- ❖ Salaries, benefits, supplies, training, equipment, etc. associated with:
  - Mayor and City Council
  - City Administrator
  - Finance Department
- ❖ Contracted legal, audit and accounting services

All the costs listed above are paid for out of the general fund and primarily exist for the support of the City as a whole. Costs included in the allocation plan should be administrative in nature and must be reasonably perceived to benefit all City funds. Therefore, the cost of services such as public safety, street maintenance, community events, etc. are excluded from the plan and are not subject to allocation.

**Activities & Measurement Criteria**

The activities on which to base allocations and the measurement criteria for those activities are identified in the following table.

<b>ACTIVITIES</b> <i>(based on April 2021 time study)</i>	<b>MEASUREMENT CRITERIA</b>
Accounts Payable	Non-salary expenses (2021 budget)
Mayor and Council	# of agenda items (2020 actual)
Payment Processing	Revenue (2021 budget)
Utility Billing	# of accounts (December 2020 actual)
Budget, Accounting, Annual reporting	Total expenses (2021 budget)

**Percentages**

Salaries and benefits for the Mayor, Council, City Administrator, City Clerk-Treasurer and Administrative Assistant shall be allocated using the following percentages.

<b>Position</b>	<b><u>General</u></b>			
	<b><u>Government</u></b>	<b><u>Water</u></b>	<b><u>Sewer</u></b>	<b><u>Storm</u></b>
Council	69.77%	10.47%	8.14%	11.63%
Mayor	69.77%	10.47%	8.14%	11.63%
City Administrator	57.09%	17.66%	15.93%	9.33%
Clerk/Treasurer	60.88%	13.36%	19.42%	6.34%
Admin Assistant	79.69%	7.32%	10.08%	2.91%

Supplies, training, and other expenses associated with the City Council and Mayor shall be directly coded to various funds based on the Council and Mayor allocation percentages shown above. These percentages are based on the allocation of actual council agenda items from 2020.

Supplies, training, and other expenses associated with the Clerk’s Office, including payment of contracted accounting and auditing services shall be directly coded based on the percentages shown below. These percentages are based on 2021 budgeted expenditures. The same percentages shall be used to allocate legal expenses.

	<b><u>General Government</u></b>	<b><u>Water</u></b>	<b><u>Sewer</u></b>	<b><u>Storm</u></b>
Contracted Services	60.59%	13.46%	19.78%	6.17%

**Updates to the Plan**

The cost allocation plan should be reviewed annually during budget development. It is not necessary to update the activities or measurement criteria on an annual basis as long as the plan has been reviewed for general reasonableness. If significant changes have been made which may affect the overall allocation percentages then the plan should be updated. The plan should be updated at least every five years. The current plan was established in 2021, with review and updates made for 2024. A full review and update of the plan should be performed in 2024 for use in the 2025 budget.



# Equipment Replacement Plan

The asset replacement plan includes funding for future replacement of the following assets:

Description	Department	Replacement		Replacement	Allocations							
		Year	Useful Life	Cost	Police	Finance	Parks	Streets	Water	Sewer	Storm	
2018 Ford Explorer	Police 3	2025	7	50,000	100.00%							
2020 Ford Explorer	Police 4	2027	7	50,000	100.00%							
Chevy Tahoe	Police 5	2028	7	50,000	100.00%							
2022 Ford Explorer	Police 6	2030	7	50,000	100.00%							
2020 Ford Fusion	Police 7	2027	7	50,000	100.00%							
2019 Ford Fusion	Police 8	2026	7	50,000	100.00%							
2023 Ford Truck	Police 9	2030	7	50,000	100.00%							
2003 Ford Ranger - Parks	PW 2	2026	15	40,000			50.00%	12.50%	12.50%	12.50%	12.50%	
2008 Ford F250 w/ snow plow	PW 3	2026	15	50,400			20.00%	20.00%	20.00%	20.00%	20.00%	20.00%
2012 John Deere Tractor	PW 4	2024	10	72,000				100.00%				
2011 Ford F250 utility truck	PW 5	2025	15	70,000			20.00%	20.00%	20.00%	20.00%	20.00%	
2022 Kubota 3400 tractor/brush hog	PW 6	2037	15	66,600				100.00%				
2007 New Holland B95 Backhoe	PW 7	2027	10	100,000			20.00%	20.00%	20.00%	20.00%	20.00%	
2000 Freightliner FL70 dump truck	PW 9	2028	15	140,000			20.00%	20.00%	20.00%	20.00%	20.00%	
2002 Chevy Bucket Truck	PW 10	2029	15	130,000			50.00%	50.00%				
Riding Lawn Mower	PW 11	2027	6	12,500			50.00%	50.00%				
Ferris 48" Mower	PW 12	2024	10	8,000			50.00%	50.00%				
John Deere Gator 2wd	PW 13	2031	20	20,000			50.00%	12.50%	12.50%	12.50%	12.50%	
Flail mower attachment	PW 14	2024	12	20,000				70.00%	10.00%	10.00%	10.00%	
2015 Chevy Malibu	Admin 1	2025	10	43,868		57.00%			18.00%	16.00%	9.00%	
				<b>1,123,368</b>								

The 2024 charges are as follows:

2024					
<u>Police</u>	<u>Parks</u>	<u>Streets</u>	<u>Water</u>	<u>Sewer</u>	<u>Storm</u>
<b>50,000</b>	<b>23,155</b>	<b>3,808</b>	<b>12,677</b>	<b>12,677</b>	<b>12,677</b>

# General Fund

## General Fund - 5 Year Comparative

<u>Account</u>	<u>Description</u>	<u>2020 Actual</u>	<u>2021 Actual</u>	<u>2022 Actual</u>	<u>2023 Projected</u>	<u>2024 Budget</u>
<b>308</b>	<b>Beginning Fund Balance</b>	<b>1,183,198</b>	<b>698,176</b>	<b>891,993</b>	<b>1,343,661</b>	<b>1,069,693</b>
310	Taxes	1,852,185	1,893,871	2,171,179	2,183,542	2,189,300
320	Licenses & Permits	255,758	294,163	310,399	350,227	350,300
330	Intergovernmental Revenues	272,026	651,342	622,545	158,927	409,630
340	Charges For Services	46,683	119,420	165,308	88,028	55,800
350	Fines & Forfeitures	57,497	38,682	1,402	-	-
360	Misc Revenues	118,195	48,996	908,401	123,742	118,600
380	Non Revenues	2,832	2,254	1,874	1,443	-
	<b>Total Revenues</b>	<b>2,605,177</b>	<b>3,048,728</b>	<b>4,181,108</b>	<b>2,905,910</b>	<b>3,123,630</b>
511	Legislative	33,321	27,521	24,795	58,898	35,300
512	Judicial	79,816	73,426	60,578	71,296	75,000
513	Executive	62,252	28,449	29,771	28,628	32,000
514	Finance	264,710	303,369	281,760	299,068	317,500
515	Legal Services	62,891	47,743	77,525	59,100	45,000
518	Central Services	90,003	107,163	104,875	128,513	118,500
521	Law Enforcement	1,310,641	1,335,924	1,680,669	1,461,537	1,709,889
523	Jail Costs	78,732	33,717	57,967	60,828	101,750
524	Protective Inspections	14,812	79	-	-	-
528	Comm/Alarms/Dispatch	156,059	182,635	122,987	217,707	200,000
537	Garbage & Solid Waste Utilities	18,895	16,375	15,323	30,667	18,000
553	Conservation	5,410	5,124	50,879	115,533	3,000
554	Environmental Services	14,435	14,361	16,461	14,483	18,000
558	Planning & Community Devel	357,413	297,462	388,264	297,693	310,200
560	Social Services	9,916	7,694	3,911	5,512	10,000
570	Culture & Recreation	6,810	8,853	64,829	67,838	95,500
575	Cultural & Recreational Fac	2,960	4,980	4,232	10,614	10,000
576	Park Facilities	20,011	165,209	292,849	110,313	121,200
580	Non Expenditures	(93,026)	112,858	(16,620)	1,008	-
594	Capital Expenditures	89,138	81,970	17,387	-	-
597	Interfund Transfers	505,000	-	451,000	140,640	36,350
	<b>Total Expenditures</b>	<b>3,090,199</b>	<b>2,854,911</b>	<b>3,729,441</b>	<b>3,179,878</b>	<b>3,257,189</b>
	<b>Revenues less expenditures</b>	<b>(485,022)</b>	<b>193,817</b>	<b>451,667</b>	<b>(273,968)</b>	<b>(133,559)</b>
<b>508</b>	<b>Ending Fund Balance Balance</b>	<b>698,176</b>	<b>891,993</b>	<b>1,343,661</b>	<b>1,069,693</b>	<b>936,134</b>
	<b>Less Restricted Fund Balance - ROW sale</b>	<b>-</b>	<b>-</b>	<b>370,350</b>	<b>370,350</b>	<b>370,350</b>
	<b>Unrestricted Ending Balance</b>	<b>698,176</b>	<b>891,993</b>	<b>973,311</b>	<b>699,343</b>	<b>565,784</b>
	<b>Unrestricted Ending Fund Balance as % of Expenditures</b>	<b>23%</b>	<b>31%</b>	<b>26%</b>	<b>22%</b>	<b>17%</b>

The decrease in fund balance includes continued funding of 3/4 (approx. \$80K) of the Community Connector position with American Rescue Plan Act (ARPA) funds received in 2021 and 2022; and one-time police remodel costs of \$50,000.

# Street Fund

<u>Account</u>	<u>Description</u>	<u>2020 Actual</u>	<u>2021 Actual</u>	<u>2022 Actual</u>	<u>2023 Projected</u>	<u>2024 Budget</u>
<b>308</b>	<b>Beginning Fund Balance</b>	<b>142,047</b>	<b>124,108</b>	<b>115,785</b>	<b>232,541</b>	<b>134,636</b>
310	Taxes	182,419	185,467	192,357	186,850	188,700
320	Licenses & Permits	7,699	360	16,497	660	700
330	Intergovernmental Revenues	193,503	65,713	255,541	61,659	60,450
360	Misc Revenues	2,372	21,584	3,218	25,548	25,500
397	Interfund Transfers	150,000	-	253,000	140,640	36,350
	<b>Total Revenues</b>	<b>535,993</b>	<b>273,125</b>	<b>720,613</b>	<b>415,357</b>	<b>311,700</b>
542	Streets - Maintenance	292,814	220,743	462,602	271,506	248,200
543	Streets - Admin & Overhead	28,330	52,585	63,998	79,845	63,500
594	Capital Expenditures	232,788	8,119	77,258	161,912	-
	<b>Total Expenditures</b>	<b>553,932</b>	<b>281,447</b>	<b>603,857</b>	<b>513,263</b>	<b>311,700</b>
	<b>Revenues less expenditures</b>	<b>(17,939)</b>	<b>(8,322)</b>	<b>116,756</b>	<b>(97,905)</b>	<b>-</b>
<b>508</b>	<b>Ending Fund Balance Balance</b>	<b>124,108</b>	<b>115,785</b>	<b>232,541</b>	<b>134,636</b>	<b>134,636</b>

# Utility Funds

## Stormwater Maintenance Fund - 5 Year Comparative

<u>Account</u>	<u>Description</u>	<u>2020 Actual</u>	<u>2021 Actual</u>	<u>2022 Actual</u>	<u>2023 Projected</u>	<u>2024 Budget</u>
<b>308</b>	<b>Beginning Fund Balance</b>	<b>1,400,295</b>	<b>1,534,020</b>	<b>1,645,778</b>	<b>1,684,666</b>	<b>843,746</b>
330	Intergovernmental Revenues	5,899	36,464	-	-	-
340	Charges For Services	385,875	427,583	437,496	404,811	445,000
350	Fines & Forfeitures	725	596	2,046	1,203	1,200
360	Misc Revenues	7,762	-	-	23,709	23,000
	<b>Total Revenues</b>	<b>400,261</b>	<b>464,644</b>	<b>439,542</b>	<b>429,723</b>	<b>469,200</b>
538	Stormwater Operations	250,259	352,885	400,654	355,643	393,800
594	Capital Expenditures	16,277	-	-	915,000	-
	<b>Total Expenditures</b>	<b>266,536</b>	<b>352,885</b>	<b>400,654</b>	<b>1,270,643</b>	<b>393,800</b>
	<b>Revenues less expenditures</b>	<b>133,725</b>	<b>111,758</b>	<b>38,889</b>	<b>(840,921)</b>	<b>75,400</b>
<b>508</b>	<b>Ending Fund Balance Balance</b>	<b>1,534,020</b>	<b>1,645,778</b>	<b>1,684,666</b>	<b>843,746</b>	<b>919,146</b>

## Water Maintenance Fund - 5 Year Comparative

<u>Account</u>	<u>Description</u>	<u>2020 Actual</u>	<u>2021 Actual</u>	<u>2022 Actual</u>	<u>2023 Projected</u>	<u>2024 Budget</u>
<b>308</b>	<b>Beginning Fund Balance</b>	<b>757,673</b>	<b>852,431</b>	<b>972,553</b>	<b>1,143,208</b>	<b>1,225,354</b>
340	Charges For Services	761,370	804,041	861,891	790,608	890,900
350	Fines & Forfeitures	9,764	5,052	18,326	10,219	1,000
360	Misc Revenues	4,201	1,587	20,270	26,299	20,000
	<b>Total Revenues</b>	<b>775,335</b>	<b>810,679</b>	<b>900,486</b>	<b>827,126</b>	<b>911,900</b>
534	Water Utilities	656,029	690,558	729,831	744,979	830,200
594	Capital Expenditures	24,548	-	-	-	-
	<b>Total Expenditures</b>	<b>680,577</b>	<b>690,558</b>	<b>729,831</b>	<b>744,979</b>	<b>830,200</b>
	<b>Revenues less expenditures</b>	<b>94,758</b>	<b>120,121</b>	<b>170,655</b>	<b>82,147</b>	<b>81,700</b>
<b>508</b>	<b>Ending Fund Balance Balance</b>	<b>852,431</b>	<b>972,553</b>	<b>1,143,208</b>	<b>1,225,354</b>	<b>1,307,054</b>

**Sewer Maintenance Fund - 5 Year Comparative**

<u>Account</u>	<u>Description</u>	<u>2020 Actual</u>	<u>2021 Actual</u>	<u>2022 Actual</u>	<u>2023 Projected</u>	<u>2024 Budget</u>
<b>308</b>	<b>Beginning Fund Balance</b>	<b>361,939</b>	<b>401,696</b>	<b>523,096</b>	<b>640,628</b>	<b>823,118</b>
340	Charges For Services	990,383	1,147,598	1,223,507	1,286,805	1,300,000
350	Fines & Forfeitures	1,631	3,573	11,470	6,009	6,000
360	Misc Revenues	2,061	-	-	23,709	20,000
	<b>Total Revenues</b>	<b>994,075</b>	<b>1,151,171</b>	<b>1,234,978</b>	<b>1,316,522</b>	<b>1,326,000</b>
535	Sewer	953,878	1,029,771	1,117,445	1,134,033	1,142,900
594	Capital Expenditures	440	-	-	-	-
	<b>Total Expenditures</b>	<b>954,318</b>	<b>1,029,771</b>	<b>1,117,445</b>	<b>1,134,033</b>	<b>1,142,900</b>
	<b>Revenues less expenditures</b>	<b>39,757</b>	<b>121,400</b>	<b>117,533</b>	<b>182,490</b>	<b>183,100</b>
<b>508</b>	<b>Ending Fund Balance Balance</b>	<b>401,696</b>	<b>523,096</b>	<b>640,628</b>	<b>823,118</b>	<b>1,006,218</b>

**Water Capital Fund - 5 Year Comparative**

<u>Account</u>	<u>Description</u>	<u>2020 Actual</u>	<u>2021 Actual</u>	<u>2022 Actual</u>	<u>2023 Projected</u>	<u>2024 Budget</u>
<b>308</b>	<b>Beginning Fund Balance</b>	<b>359,186</b>	<b>444,343</b>	<b>512,600</b>	<b>582,454</b>	<b>688,165</b>
330	Intergovernmental Revenues	-	-	-	-	-
340	Charges For Services	83,110	68,257	69,854	82,002	65,000
360	Misc Revenues	2,047	-	-	23,709	20,000
	<b>Total Revenues</b>	<b>85,157</b>	<b>68,257</b>	<b>69,854</b>	<b>105,711</b>	<b>85,000</b>
594	Capital Expenditures	-	-	-	-	-
	<b>Total Expenditures</b>	<b>-</b>	<b>-</b>	<b>-</b>	<b>-</b>	<b>-</b>
	<b>Revenues less expenditures</b>	<b>85,157</b>	<b>68,257</b>	<b>69,854</b>	<b>105,711</b>	<b>85,000</b>
<b>508</b>	<b>Ending Fund Balance Balance</b>	<b>444,343</b>	<b>512,600</b>	<b>582,454</b>	<b>688,165</b>	<b>773,165</b>

**Sewer Capital Fund - 5 Year Comparative**

<u>Account</u>	<u>Description</u>	<u>2020 Actual</u>	<u>2021 Actual</u>	<u>2022 Actual</u>	<u>2023 Projected</u>	<u>2024 Budget</u>
<b>308</b>	<b>Beginning Fund Balance</b>	<b>332,647</b>	<b>334,470</b>	<b>334,470</b>	<b>334,470</b>	<b>389,266</b>
340	Charges For Services	-	-	-	31,087	15,000
360	Misc Revenues	1,823	-	-	23,709	20,000
	<b>Total Revenues</b>	<b>1,823</b>	<b>-</b>	<b>-</b>	<b>54,796</b>	<b>35,000</b>
	<b>Total Expenditures</b>	<b>-</b>	<b>-</b>	<b>-</b>	<b>-</b>	<b>-</b>
	<b>Revenues less expenditures</b>	<b>1,823</b>	<b>-</b>	<b>-</b>	<b>54,796</b>	<b>35,000</b>
<b>508</b>	<b>Ending Fund Balance Balance</b>	<b>334,470</b>	<b>334,470</b>	<b>334,470</b>	<b>389,266</b>	<b>424,266</b>

**Stormwater Capital Fund - 5 Year Comparative**

<u>Account</u>	<u>Description</u>	<u>2020 Actual</u>	<u>2021 Actual</u>	<u>2022 Actual</u>	<u>2023 Projected</u>	<u>2024 Budget</u>
<b>308</b>	<b>Beginning Fund Balance</b>	<b>195,003</b>	<b>196,071</b>	<b>196,071</b>	<b>196,071</b>	<b>249,877</b>
330	Intergovernmental	-	-	-	-	-
340	Charges for Services	-	-	-	30,097	30,097
360	Misc Revenues	1,068	-	-	23,709	-
	<b>Total Revenues</b>	<b>1,068</b>	<b>-</b>	<b>-</b>	<b>53,806</b>	<b>30,097</b>
594	Capital Expenditures	-	-	-	-	-
	<b>Total Expenditures</b>	<b>-</b>	<b>-</b>	<b>-</b>	<b>-</b>	<b>-</b>
	<b>Revenues less expenditures</b>	<b>1,068</b>	<b>-</b>	<b>-</b>	<b>53,806</b>	<b>30,097</b>
<b>508</b>	<b>Ending Fund Balance Balance</b>	<b>196,071</b>	<b>196,071</b>	<b>196,071</b>	<b>249,877</b>	<b>279,974</b>

# Remaining Funds

## Drug Fund - 3 Year Comparative

<u>Account</u>	<u>Description</u>	<u>2022 Actual</u>	<u>2023 Projected</u>	<u>2024 Budget</u>
308 10 00 02	Beginning Balance	6,677	6,677	6,677
	<b>308 Beginning Balances</b>	<b>6,677</b>	<b>6,677</b>	<b>6,677</b>
	<b>TOTAL REVENUES</b>	-	-	<b>1,000</b>
	<b>TOTAL EXPENDITURES</b>	-	-	-
	<b>REVENUES LESS EXPENDITURES</b>	-	-	<b>1,000</b>
<b>508 80 00 02</b>	<b>Ending Balance</b>	<b>6,677</b>	<b>6,677</b>	<b>7,677</b>

## Rainy Day Fund - 3 Year Comparative

<u>Account</u>	<u>Description</u>	<u>2022 Actual</u>	<u>2023 Projected</u>	<u>2024 Budget</u>
308 80 01 05	Beginning Balance	123,465	321,465	345,174
	<b>308 Beginning Balances</b>	<b>123,465</b>	<b>321,465</b>	<b>345,174</b>
	360 Misc Revenues	-	23,709	20,000
	397 Transfer In	198,000	-	-
	<b>TOTAL REVENUES</b>	<b>198,000</b>	<b>23,709</b>	<b>20,000</b>
<b>508 80 01 05</b>	<b>Ending Balance</b>	<b>321,465</b>	<b>345,174</b>	<b>365,174</b>

## Capital Improvement Fund - 3 Year Comparative

<u>Account</u>	<u>Description</u>	<u>2022 Actual</u>	<u>2023 Projected</u>	<u>2024 Budget</u>
308 80 01 06	Beginning Balance	642,610	432,155	219,826
	<b>308 Beginning Balances</b>	<b>642,610</b>	<b>432,155</b>	<b>219,826</b>
	310 Taxes	109,544	102,672	100,000
	<b>TOTAL REVENUES</b>	<b>109,544</b>	<b>102,672</b>	<b>100,000</b>
	597 Interfund Transfers	320,000	315,000	315,000
	<b>TOTAL EXPENDITURES</b>	<b>320,000</b>	<b>315,000</b>	<b>315,000</b>
	<b>REVENUES LESS EXPENDITURES</b>	<b>(210,456)</b>	<b>(212,328)</b>	<b>(215,000)</b>
<b>508 80 01 06</b>	<b>Ending Balance</b>	<b>432,155</b>	<b>219,826</b>	<b>4,826</b>

**Park Impact Fee Fund - 3 Year Comparative**

<u>Account</u>	<u>Description</u>	<u>2022 Actual</u>	<u>2023 Projected</u>	<u>2024 Budget</u>
308 10 01 10	Estimated Beginning Balance	136,680	170,377	208,500
	<b>308 Beginning Balances</b>	<b>136,680</b>	<b>170,377</b>	<b>208,500</b>
311 11 00 00	Parks Property Tax Levy	33,697	38,123	36,000
310	Taxes	33,697	38,123	36,000
	<b>TOTAL REVENUES</b>	<b>33,697</b>	<b>38,123</b>	<b>36,000</b>
	<b>TOTAL EXPENDITURES</b>	<b>-</b>	<b>-</b>	<b>-</b>
	<b>REVENUES LESS EXPENDTURES</b>	<b>33,697</b>	<b>38,123</b>	<b>36,000</b>
508 80 01 10	Ending Balance	170,377	208,500	244,500

**General Obligation Bond Fund - 3 Year Comparative**

<u>Account</u>	<u>Description</u>	<u>2022 Actual</u>	<u>2023 Projected</u>	<u>2024 Budget</u>
308 10 00 25	Restricted Beginning Balance	6,002	7,764	3,764
	<b>308 Beginning Balances</b>	<b>6,002</b>	<b>7,764</b>	<b>3,764</b>
397 00 00 25	Transfer In	320,000	315,000	315,000
	<b>397 Interfund Transfers</b>	<b>320,000</b>	<b>315,000</b>	<b>315,000</b>
591 73 71 25	GO Bonds - Principal	277,411	285,000	291,100
592 73 83 25	GO Bonds - Interest	40,827	34,000	27,200
	<b>591 Debt Service</b>	<b>318,238</b>	<b>319,000</b>	<b>318,300</b>
508 10 00 25	Ending Balance	7,764	3,764	464

**Equipment Replacement Fund - 3 Year Comparative**

<u>Account</u>	<u>Description</u>	<u>2022 Actual</u>	<u>2023 Projected</u>	<u>2024 Budget</u>
308 00 00 00	Estimated Beginning Balance	-	759,709	757,109
	<b>308 Beginning Fund Balance</b>	<b>-</b>	<b>759,709</b>	<b>757,109</b>
340 00 00 00	Charges For Services	818,500	124,200	115,100
594 10 64 00	Capital Outlay	58,791	126,800	100,000
	<b>508 Ending Fund Balance</b>	<b>759,709</b>	<b>757,109</b>	<b>772,209</b>



**Unemployment Trust Fund - 3 Year Comparative**

<u>Account</u>	<u>Description</u>	<u>2022 Actual</u>	<u>2023 Projected</u>	<u>2024 Budget</u>
308 80 06 21	Beginning Balance	4,673	(6,413)	3,587
	<b>308 Beginning Balances</b>	<b>4,673</b>	<b>(6,413)</b>	<b>3,587</b>
	<b>TOTAL REVENUES</b>	<b>-</b>	<b>10,000</b>	<b>-</b>
517 78 20 00	Unemployment Disbursement	11,086	-	-
	<b>TOTAL EXPENDITURES</b>	<b>11,086</b>	<b>-</b>	<b>-</b>
	<b>REVENUES LESS EXPENDITURES</b>	<b>(11,086)</b>	<b>10,000</b>	<b>-</b>
508 80 06 21	Ending Balance	(6,413)	3,587	3,587

**Explorers Trust Fund - 3 Year Comparative**

<u>Account</u>	<u>Description</u>	<u>2022 Actual</u>	<u>2023 Projected</u>	<u>2024 Budget</u>
308 80 00 25	Estimated Beginning Balance	27,415	27,417	27,417
	<b>308 Beginning Balances</b>	<b>27,415</b>	<b>27,417</b>	<b>27,417</b>
	<b>360 Total Revenues</b>	<b>2</b>	<b>-</b>	<b>-</b>
	<b>521 Total Expenditures</b>	<b>-</b>	<b>-</b>	<b>-</b>
508 80 00 25	Ending Balance	27,417	27,417	27,417