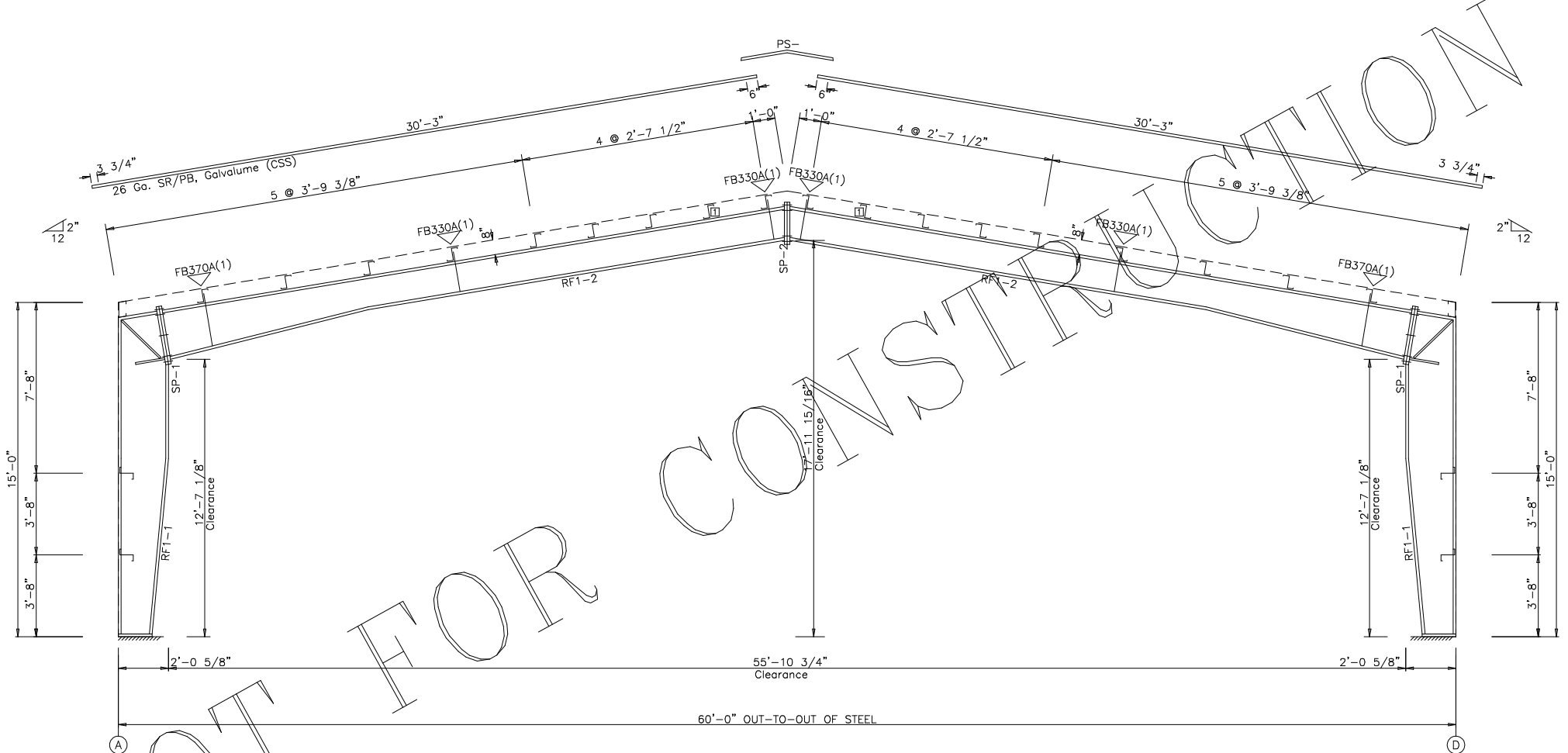


▽ FLANGE BRACES: Both Sides(U.N.)
 FBxxA(1): xx=length(in)
 A - L2x1/8

CONNECTION PLATES	
ID	Mark/Part
1	ARC083



RIGID FRAME CROSS SECTION: FRAME LINE 2 3 4

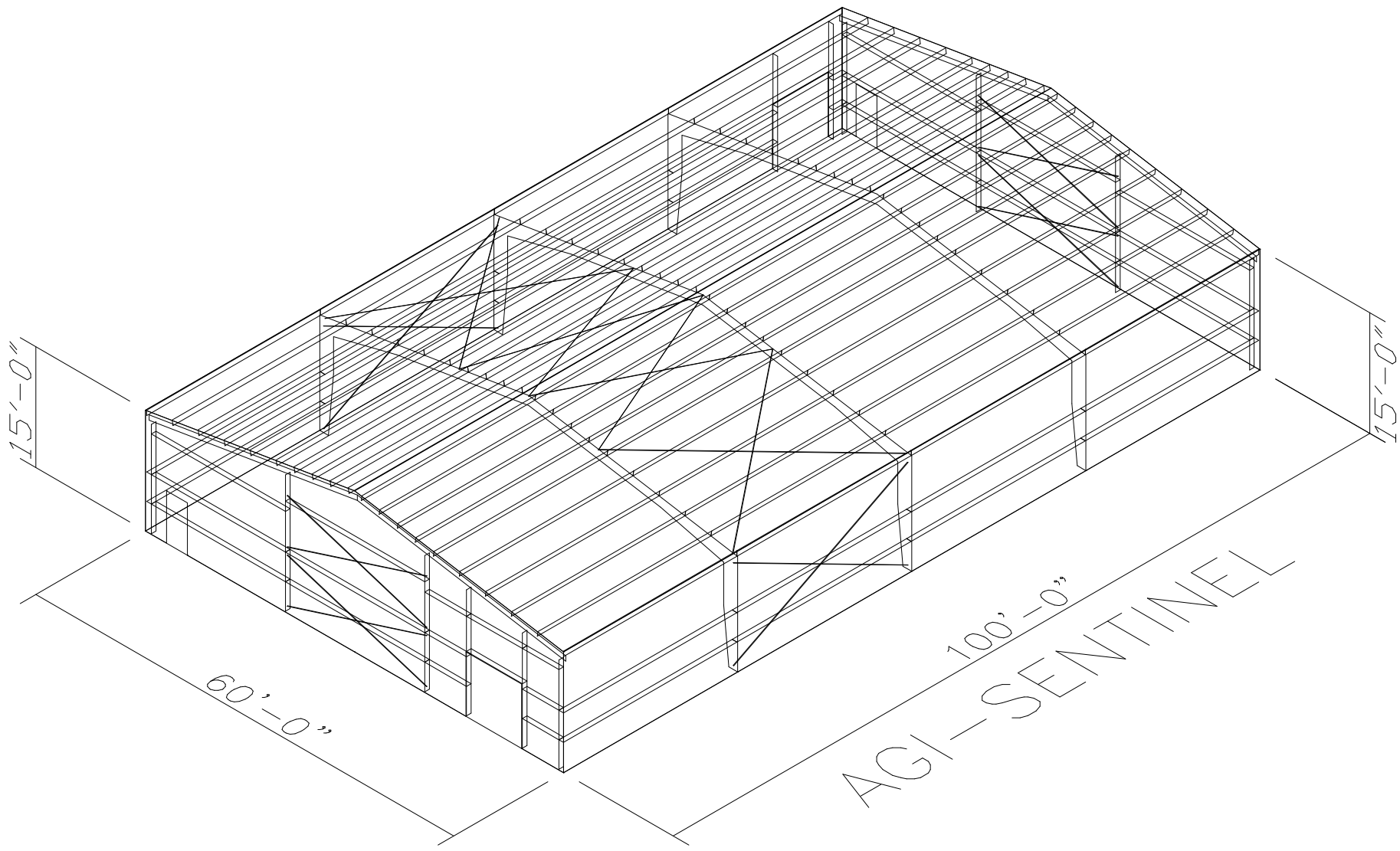
NOT FOR CONSTRUCTION

AGI-SENTINEL
 237 SOUTH 4TH STREET P.O. BOX 348 ALBION, NEBRASKA USA 68620
 800.327.0790 SENTINELBUILDINGS.COM AGGROWTH.COM
 CERTIFICATE OF AUTHORIZATION #: CA4951

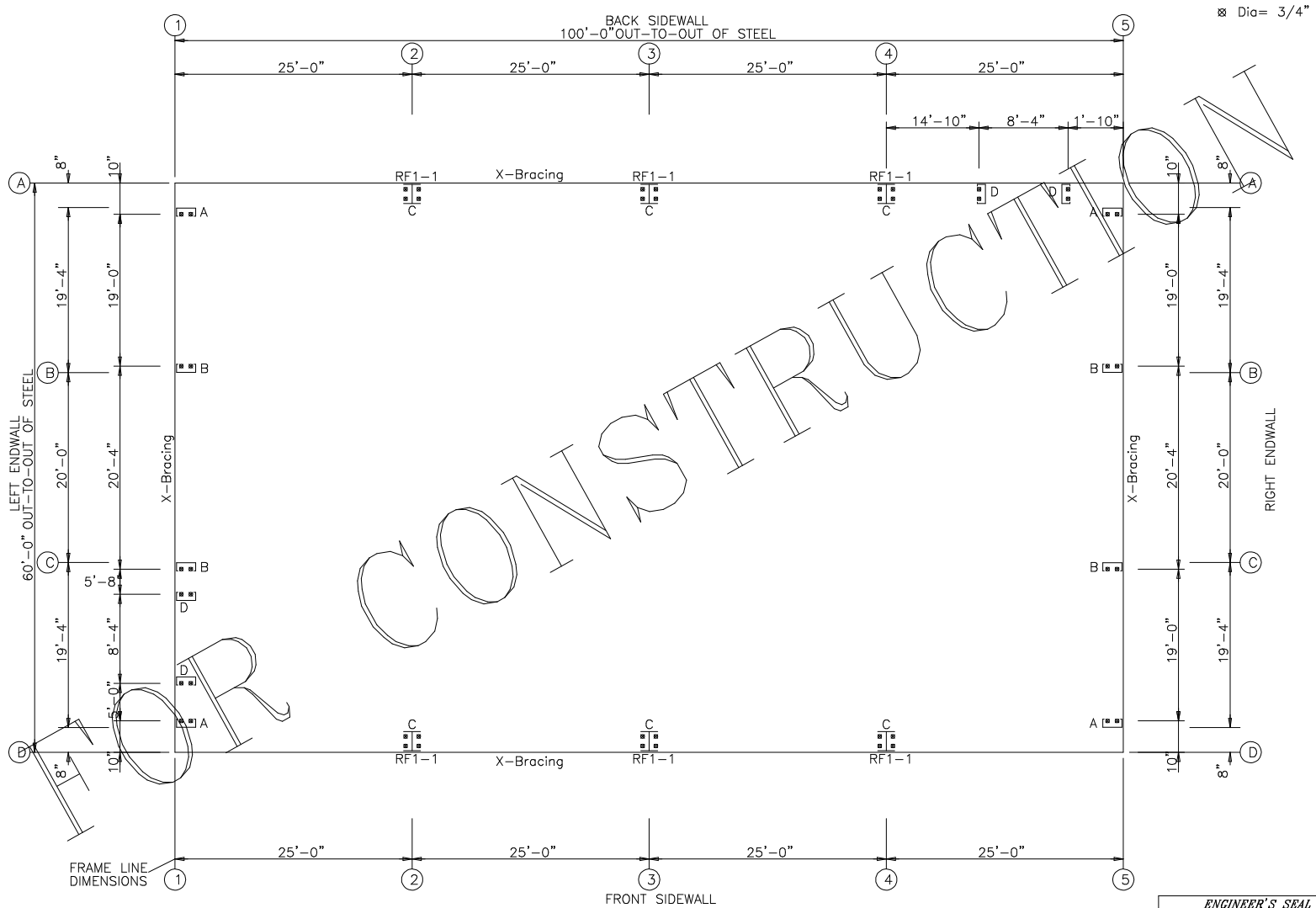
PROJECT: SPORTS COMPLEX (BOYS)	JOB NUMBER: PAGE No.
ALBION, NE 68620	29240291FR
DESIGN: ZZZ	ENGR:
DATE: 11/4/24	

Neither the engineer named on the seal, nor AGI-Sentinel is acting as the Engineer of Record. The responsibility of the engineer named and AGI-Sentinel is limited to the structural performance of the components designed by AGI-Sentinel.

ENGINEER'S SEAL



NOTE



ANCHOR BOLT PLAN
 NOTE: All Base Plates @ 100'-0" (U.N.)

AGI-SENTINEL
 237 SOUTH 4TH STREET P.O. BOX 348 ALBION, NEBRASKA USA 68620
 800.327.0790 SENTINELBUILDINGS.COM AGGROWTH.COM
 CERTIFICATE OF AUTHORIZATION #: CA4951

PROJECT: SPORTS COMPLEX (BOYS)	JOB NUMBER: PAGE No.
ALBION, NE 68620	29240291FR
DESIGN: ZZZ	ENGR: ZZZ
	DATE: 11/4/24

Neither the engineer named on the seal, nor AGI-Sentinel is acting as the Engineer of Record. The responsibility of the engineer named and AGI-Sentinel is limited to the structural performance of the components designed by AGI-Sentinel.

ENGINEER'S SEAL