





NOTES: IRC

- GRADE CONDITIONS MAY VARY FOR INDIVIDUAL SITE FROM THAT SHOWN. BUILDER SHALL VERIFY AND COORDINATE PER ACTUAL SITE CONDITIONS.

- WINDOW HEAD HEIGHTS:  
1ST FLOOR = 7'-0" U.N.O. ON ELEVATIONS.  
2ND FLOOR = 7'-0" U.N.O. ON ELEVATIONS.

- ROOFING: PITCHED SHINGLES PER DEVELOPER.

- WINDOWS: MANUFACTURER PER DEVELOPER. DIVIDED LITES AS SHOWN ON THE EXTERIOR ELEVATIONS.

- ENTRY DOOR: AS SELECTED BY DEVELOPER.

- GARAGE DOORS: AS SELECTED BY DEVELOPER, RAISED PANEL AS SHOWN.

- CHIMNEY AS OCCURS: TOP OF CHIMNEYS TO BE A MINIMUM OF 24" ABOVE ANY ROOF WITHIN 10'-0" OF CHIMNEY.

- ALL EXTERIOR MATERIALS TO BE INSTALLED PER MANUFACTURER'S WRITTEN INSTRUCTIONS.

- PROTECTION AGAINST DECAY:  
(ALL PORTIONS OF A PORCH, SCREEN PORCH OR DECK FROM THE BOTTOM OF THE HEADER DOWN, INCLUDING POST, RAILS, PICKETS, STEPS AND FLOOR STRUCTURE.)

KEY NOTES:

MASONRY:

1 ADHERED STONE VENEER AS SELECTED BY DEVELOPER. HEIGHT AS NOTED.

2 MASONRY FULL BRICK AS SELECTED BY DEVELOPER. HEIGHT AS NOTED.

3 MASONRY FULL STONE AS SELECTED BY DEVELOPER. HEIGHT AS NOTED.

4 8" SOLDIER COURSE.

5 ROWLOCK COURSE

6 DECORATIVE KEY. SEE DETAIL.

TYPICALS:

7 CORROSION RESISTANT SCREEN LOUVERED VENTS, SIZE AS NOTED.

8 CODE APPROVED TERMINATION CHIMNEY CAP.

9 CORROSION RESISTANT ROOF TO WALL FLASHING. CODE COMPLIANT FLASHING MUST BE INSTALLED AT ALL ROOF/WALL INTERSECTIONS.

10 STANDING SEAM METAL ROOF, INSTALL PER MANUFACTURER'S WRITTEN INSTRUCTIONS.

11 DECORATIVE WROUGHT IRON. SEE DETAILS.

SIDING:

12 FIBER CEMENT SHAKE SIDING PER DEVELOPER  
W/ 5/4x4 CORNER TRIM BOARDS.

13 FIBER CEMENT LAP SIDING PER DEVELOPER  
W/ 5/4x4 CORNER TRIM BOARDS.

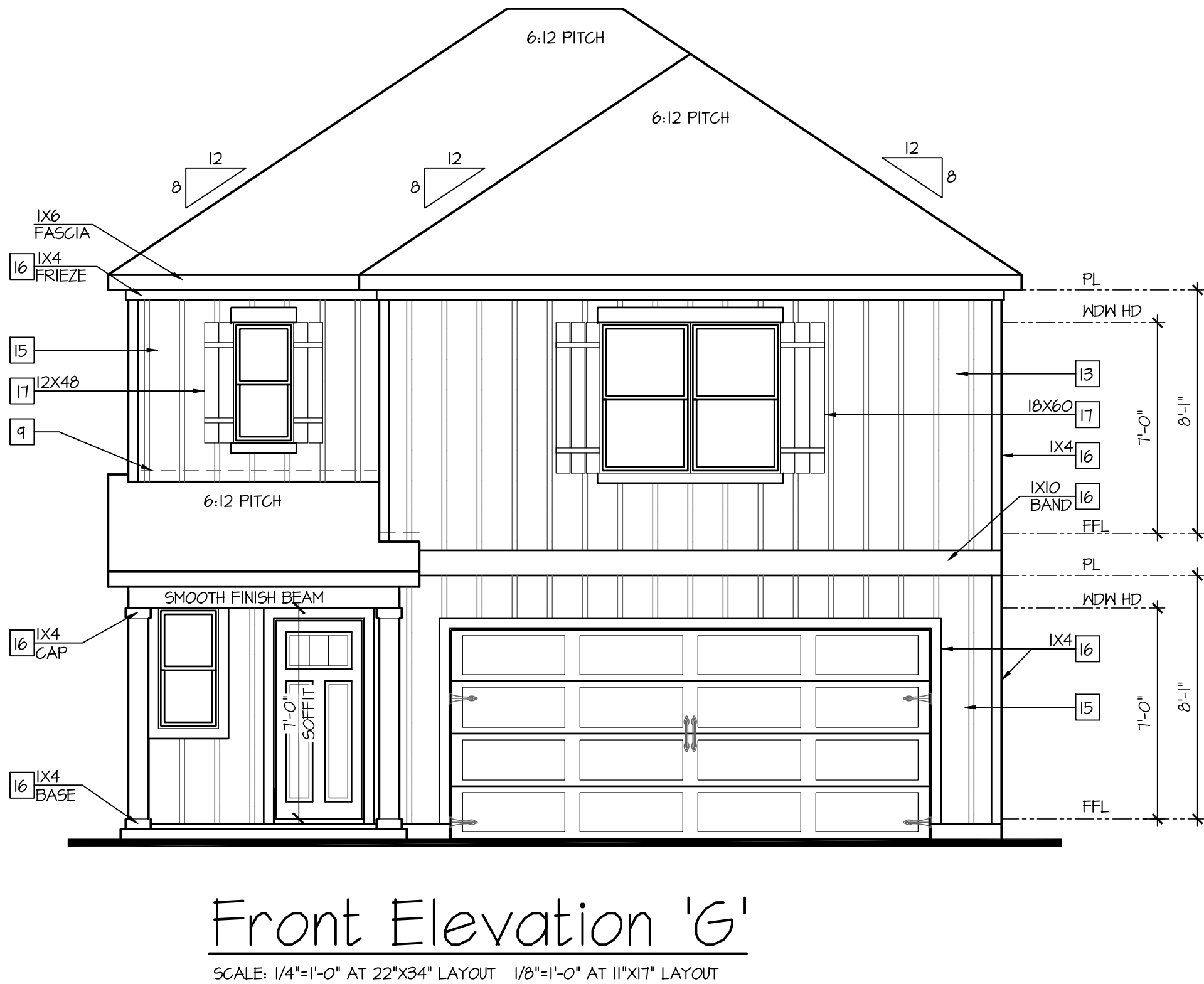
14 FIBER CEMENT WAVY SIDING PER DEVELOPER  
W/ 5/4x4 CORNER TRIM BOARDS.

15 FIBER CEMENT PANEL SIDING W/ 1X3 BATTS AT 12" O.C.  
(VINYL BOARD AND BATT SIDING)

16 1X FIBER CEMENT TRIM OR EQUAL, U.N.O. SIZE AS NOTED

17 FALSE WOOD SHUTTERS, TYPE AS SHOWN. SIZE AS NOTED.

ALL WINDOWS WHOSE OPENING IS LESS THAN 24" ABOVE THE FINISH FLOOR AND WHOSE OPENING IS GREATER THAN 12" ABOVE THE OUTSIDE WALKING SURFACE MUST HAVE WINDOW OPENING LIMITING DEVICES COMPLYING WITH LOCAL CODES



NO.	DATE:	REVISION:
△1	05.02.24	

PROFESSIONAL SEAL:

PROJECT TITLE:

30' Series

CLIENTS NAME:

**D-R-HORTON**  
*America's Builder*

PROJECT NO: GMD-GA14065

SHEET TITLE:

'DARWIN'  
EXTERIOR  
ELEVATIONS  
'4DBF-GF'

PRINT DATE:

May 02, 2024

SHEET NO:

1G

FOR  
CONSTRUCTION

THE NET FREE VENTILATING AREA SHALL NOT BE LESS THAN 1/50 OF THE AREA OF THE SPACE VENTILATED.

(PER IRC SECTION R806.2)

1 SQUARE INCH VENT FOR EVERY 150 SQUARE INCHES OF CEILINGS  
\*144 SQ. IN. = 1 SQ. FT.  
BLDG. CEILING (SF) X 144 = BLDG (SQ. IN.)  
BLDG (SQ. IN.) / 150 = SQ. IN. OF VENT REQUIRED

**ROOF AREA 1=** 1084 SF  
1084 SQ. FT. X 144 = 156096 SQ. IN.  
156096 SQ. IN. / 150 = 1040.64 SQ. IN. OF VENT REQ'D

**ROOF AREA 2=** 76 SF  
76 SQ. FT. X 144 = 10944 SQ. IN.  
10944 SQ. IN. / 150 = 72.96 SQ. IN. OF VENT REQ'D

**ROOF AREA 3=** 232 SF  
232 SQ. FT. X 144 = 33408 SQ. IN.  
33408 SQ. IN. / 150 = 222.72 SQ. IN. OF VENT REQ'D

GENERAL CONTRACTOR SHALL VERIFY THE NET FREE VENTILATION OF THE VENT PRODUCT SELECTED BY OWNER. VERIFY WITH MANUFACTURER OF HIGH AND LOW VENTS TO BE USED FOR MINIMUM CALCULATED VENTS REQUIRED. UNOBSTRUCTED VENTILATION SHALL BE MAINTAINED. PROVIDE INSULATION STOP SUCH THAT INSULATION DOES NOT OBSTRUCT FREE AIR MOVEMENT AS REQUIRED BY BUILDING OFFICIAL.


ALL OVERLAP FRAMED ROOF AREAS SHALL HAVE OPENINGS BETWEEN THE ADJACENT ATTICS IN THE ROOF SHEATHING (AS ALLOWED BY THE STRUCTURAL ENGINEER) TO ALLOW PASSAGE AND ATTIC VENTILATION BETWEEN THE TWO OR ISOLATED ATTIC SPACES SHALL BE VENTED INDEPENDENTLY TO CBC REQUIREMENTS.

PER DEVELOPER, AT ALL CANTILEVERED FLOORS, CANTILEVERED ARCHITECTURAL POP-OUTS AND ANY DOUBLE FRAMING PROJECTIONS THAT ARE SEPARATED FROM THE VENTING CALCULATIONS, SHOW ABOVE PROVIDE A CONTINUOUS 2" CORROSION RESISTANT SOFFIT VENT AT UNDERSIDE OF FRAMED ELEMENT.

ATTIC VENT CALCULATION FOR PLAN 'DARWIN': 1:300 RATIO.

BUILDER TO PROVIDE (2) LAYERS OF UNDERLAYMENT AT ANY ROOF W/ A SLOPE FROM 2:12 TO LESS THAN 4:12	
--------------------------------------------------------------------------------------------------	--



NO:	DATE:	REVISION:
	05.02.24	

PROJECT TITLE:

## 30' Series

FOR  
CONSTRUCTION

CLIENTS NAME:

**D·R·HORTON®**  
*America's Builder*

PROJECT NO: GMD-GAI4065

SHEET TITLE:  
**'DARWIN'**  
**ROOF PLAN**  
**'4DBF-G'**

PRINT DATE:

May 02, 2024

**SHEET NO:**

## 1.2 G

- GRADE CONDITIONS MAY VARY FOR INDIVIDUAL SITE FROM THAT SHOWN. BUILDER SHALL VERIFY AND COORDINATE PER ACTUAL SITE CONDITIONS.
- WINDOW HEAD HEIGHTS:  
1ST FLOOR = "T-0" U.N.O. ON ELEVATIONS.  
2ND FLOOR = "T-0" U.N.O. ON ELEVATIONS.
- ROOFING: PITCHED SHINGLES PER DEVELOPER.
- WINDOWS: MANUFACTURER PER DEVELOPER. DIVIDED LITES AS SHOWN ON THE EXTERIOR ELEVATIONS
- ENTRY DOOR: AS SELECTED BY DEVELOPER.
- GARAGE DOORS: AS SELECTED BY DEVELOPER, RAISED PANEL AS SHOWN.
- CHIMNEY: AS OCCURS. TOP OF CHIMNEYS TO BE A MINIMUM OF 24' ABOVE ANY ROOF WITHIN 10'-0" OF CHIMNEY.
- ALL EXTERIOR MATERIALS TO BE INSTALLED PER MANUFACTURER'S WRITTEN INSTRUCTIONS.
- PROTECTION AGAINST DECAY:  
(ALL PORTIONS OF A PORCH, SCREEN PORCH OR DECK FROM THE BOTTOM OF THE HEADER DOWN, INCLUDING POST, RAILS, PICKETS, STEPS AND FLOOR STRUCTURE.)

MASONRY:

ADHERED STONE VENEER AS SELECTED BY DEVELOPER. HEIGHT AS NOTED.

2 MASONRY FULL BRICK AS SELECTED BY DEVELOPER. HEIGHT AS NOTED.

3 MASONRY FULL STONE AS SELECTED BY DEVELOPER. HEIGHT AS NOTED.

4 8" SOLDIER COURSE.

5 ROWLOCK COURSE

6 DECORATIVE KEY. SEE DETAIL.

TYPICALS:

7 CORROSION RESISTANT SCREEN LOUVERED VENTS, SIZE AS NOTED.

8 CODE APPROVED TERMINATION CHIMNEY CAP.

9 CORROSION RESISTANT ROOF TO WALL FLASHING. CODE COMPLIANT FLASHING MUST BE INSTALLED AT ALL ROOF/WALL INTERSECTIONS.

10 STANDING SEAM METAL ROOF, INSTALL PER MANUFACTURER'S WRITTEN INSTRUCTIONS.

11 DECORATIVE WROUGHT IRON. SEE DETAILS.

SIDING:

12 FIBER CEMENT SHAKE SIDING PER DEVELOPER

W/ 5/4x4 CORNER TRIM BOARDS.

13 FIBER CEMENT LAP SIDING PER DEVELOPER

W/ 5/4x4 CORNER TRIM BOARDS.

14 FIBER CEMENT NAVY SIDING PER DEVELOPER

W/ 5/4x4 CORNER TRIM BOARDS.


15 FIBER CEMENT PANEL SIDING W/ 1X3 BATTS AT 12" O.C.  
(VINYL BOARD AND BATT SIDING)

16 1X FIBER CEMENT TRIM OR EQUAL, U.N.O. SIZE AS NOTED

17 FALSE WOOD SHUTTERS, TYPE AS SHOWN. SIZE AS NOTED.

ALL WINDOWS WHOSE OPENING IS LESS THAN 24" ABOVE THE FINISH FLOOR AND WHOSE OPENING IS GREATER THAN 72" ABOVE THE OUTSIDE WALKING SURFACE MUST HAVE WINDOW OPENING LIMITING DEVICES COMPLYING WITH LOCAL CODES



NO:	DATE:	REVISION:
	05.02.24	

**PROFESSIONAL SEAL:**

**PROJECT TITLE:**

## 30' Series

**CLIENTS NAME:**

**D·R·HORTON®**  
*America's Builder*

PROJECT NO: GMD-GAI4065

**SHEET TITLE:**  
**'DARWIN'**  
**EXTERIOR**  
**ELEVATIONS**  
**'4DBF-G'**

PRINT DATE:  
May 02, 2024

SHEET NO:

# 2G







**FOR  
CONSTRUCTION**



(USE 16" TJI WITH 3/4" PLYWOOD SUBFLOOR)  
15 TREADS AT 10" EACH VERIFY  
16 RISERS AT +/- 7.11" = 113 3/4" TOTAL  
RISE VERIFY

- WINDOW HEAD HEIGHTS:  
1ST FLOOR = 7'-0" U.N.O. ON ELEVATIONS.  
2ND FLOOR = 7'-0" U.N.O. ON ELEVATIONS.

ALL DIMENSIONS TO WINDOWS AND DOORS ARE TO CENTERLINE.

 <p>FULL HEIGHT 2X4 WOOD STUD PARTITION</p>	 <p>FULL HEIGHT 2X6 WOOD STUD PARTITION</p>
 <p>BRICK / STONE VENEER</p>	 <p>STUD WALL BELOW HEIGHT AND STUD SIZE AS NOTED</p>
 <p>LOW GYPSUM BOARD WALL HEIGHT AND STUD SIZE AS NOTED</p>	 <p>DRYWALL OPENING, HEIGHT AS NOTED ON PLAN.</p>

FIRE PROTECTION:

- 1 HOUSE TO GARAGE FIRE SEPARATION. GARAGE/HOUSE SEPARATION AT VERTICAL SURFACES SHALL BE PROTECTED WITH ONE (1) LAYER 1/2" GYPSUM BOARD. (PER LOCAL CODES)
- 2 GARAGE/HOUSE SEPARATION AT HORIZONTAL SURFACES SHALL BE PROTECTED WITH ONE (1) LAYER 5/8" TYPE "X" GYPSUM BOARD. (PER LOCAL CODES)
- 3 HOUSE TO GARAGE DOOR SEPARATION. PROVIDE 1-3/8" SOLID CORE DOOR OR APPROVED 20 MINUTE RATED DOOR. (PER LOCAL CODES)
- 4 BENEATH STAIRS AND LANDINGS, 1/2" GYPSUM BOARD ON WALLS AND CEILING OF ENCLOSED ACCESSIBLE AREAS. (PER LOCAL CODES)

## MEP'S

- |   |                                                                                                                                                                        |
|---|------------------------------------------------------------------------------------------------------------------------------------------------------------------------|
| 4 | GAS WATER HEATER ON 18" HIGH PLATFORM. (PER LOCAL CODES)                                                                                                               |
| 5 | FAU 8'X8' PLATFORM. VERIFY WITH TRUSS MANUFACTURER.<br>(6'-6" MIN. CLEAR HEIGHT TO HORIZONTAL MEMBERS,<br>2'X6" OVER 2'X4" BOTTOM CHORD. OF TRUSS, VERIFY W/ TRUSSES.) |
| 6 | A/C CONDENSER PAD. (VERIFY)                                                                                                                                            |

- 7 PRE-FABRICATED METAL FIREPLACE.  
INSTALL PER MANUFACTURER'S WRITTEN INSTRUCTIONS.

- 8 ATTIC ACCESS LARGE ENOUGH TO REMOVE LARGEST PIECE OF EQUIPMENT BUT NOT LESS THAN 30"x22". FIRE RATED ACCESS AS NOTED. (PER LOCAL CODES)  
ATTIC ACCESS LADDER, VERIFY LOCATION AND SIZE WITH TRUSSES.  
(25 1/2" X 54" SIZE.)  
TYPICALS:

- 9 TEMPERED SAFETY GLASS. (PER LOCAL CODES)

- 10 PLYWOOD SHELF ABOVE WITH DRYWALL FINISH OVER. HEIGHT AS NOTED.

- II HALF WALL, HEIGHT AS NOTED.

- 12 INTERIOR SOFFITS: FFL = 7'-6" U.N.O. SFL = 7'-6" U.N.O.

- BATHS:

- 13 SHOWER, TEMPERED GLASS ENCLOSURE.

- 14 TUB-SHOWER COMBO. TEMPERED GLASS ENCLOSURE.

- 15 CERAMIC TILE SHOWER AND FLOOR. TEMPERED GLASS ENCLOSURE.

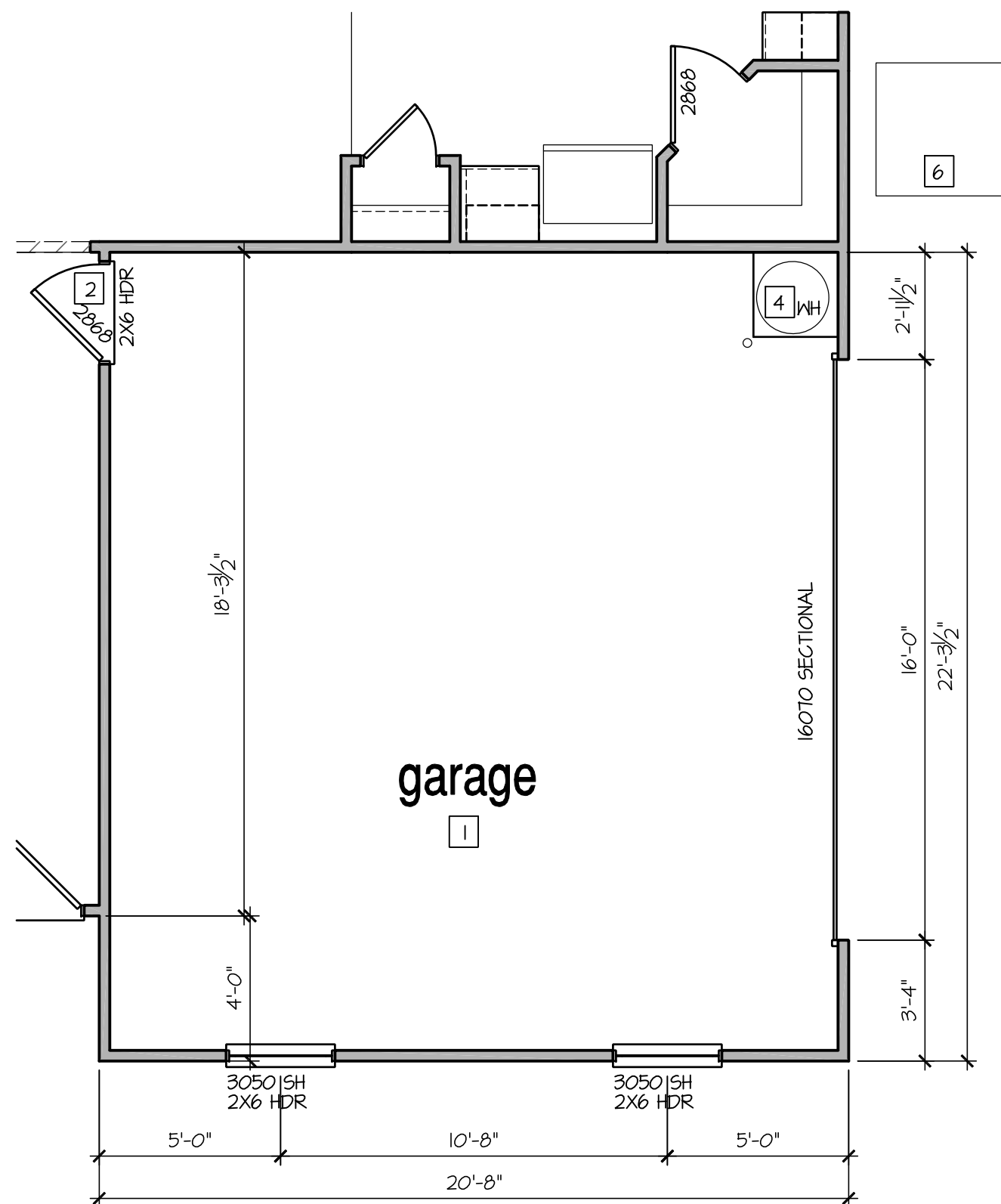
- 16 ACRYLIC TUB W/ CERAMIC PLATFORM

KITCHEN:

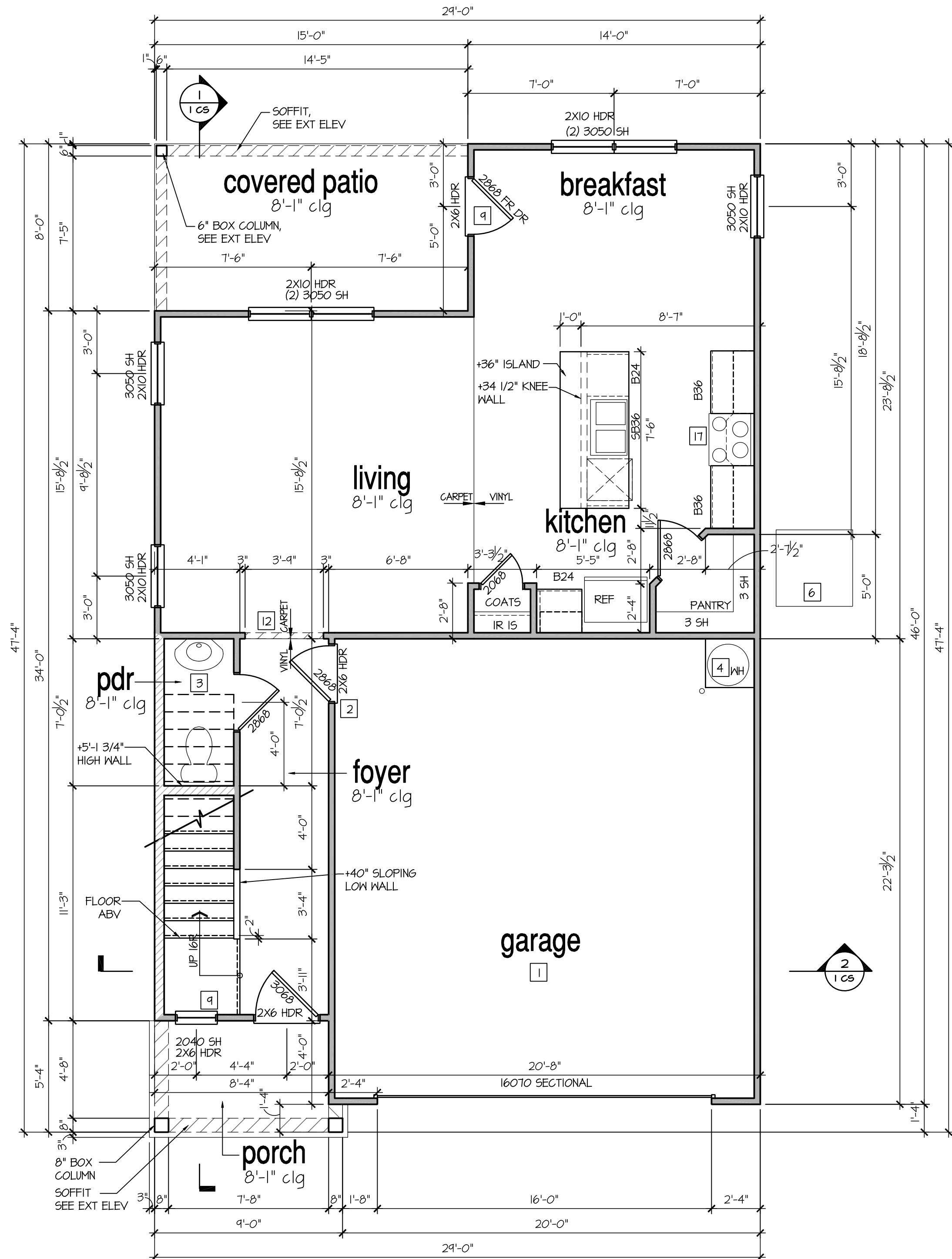
- 17 30" SLIDE-IN ELECTRICAL RANGE W/ HOOD AND MICRO ABV.  
VENT PER MANUFACTURER'S WRITTEN INSTRUCTIONS.

- 18 30" GAS COOKTOP AND HOOD.  
VENT PER MANUFACTURER'S WRITTEN INSTRUCTIONS.


- 19 ELECTRIC OVEN WITH MICROWAVE OVEN.



SCALE: 1/4"=1'-0" AT 22"X34" LAYOUT 1/8"=1'-0" AT 11"X17" LAYOUT



SCALE: 1/4"=1'-0" AT 22"X34" LAYOUT 1/8"=1'-0" AT 11"X17" LAYOUT

NO:	DATE:	REVISION:
	05.02.24	

PROFESSIONAL SEAL:

PROJECT TITLE:

## 30' Series

CLIENTS NAME:



PROJECT NO: GMD-GAI4065

**SHEET TITLE:**

**'DARWIN'**  
1st FLOOR  
PLAN '3DWF-G'

PRINT DATE:

May 02, 2024

**SHEET NO:**





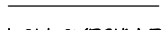

## 4 G

8'-1" STAIR NOTE:  
(USE 16" TJI WITH 3/4" PLYWOOD SUBFLOOR).  
15 TREADS AT 10" EACH VERIFY  
16 RISERS AT +/- TJI" = 113 3/4" TOTAL  
RISE VERIFY

- FOR ADDITIONAL NOTES SEE GENERAL NOTES ON TITLE SHEET AND DETAILS.  
- WINDOW HEAD HEIGHTS:  
1ST FLOOR = T'-0" U.N.O. ON ELEVATIONS.  
2ND FLOOR = T'-0" U.N.O. ON ELEVATIONS.

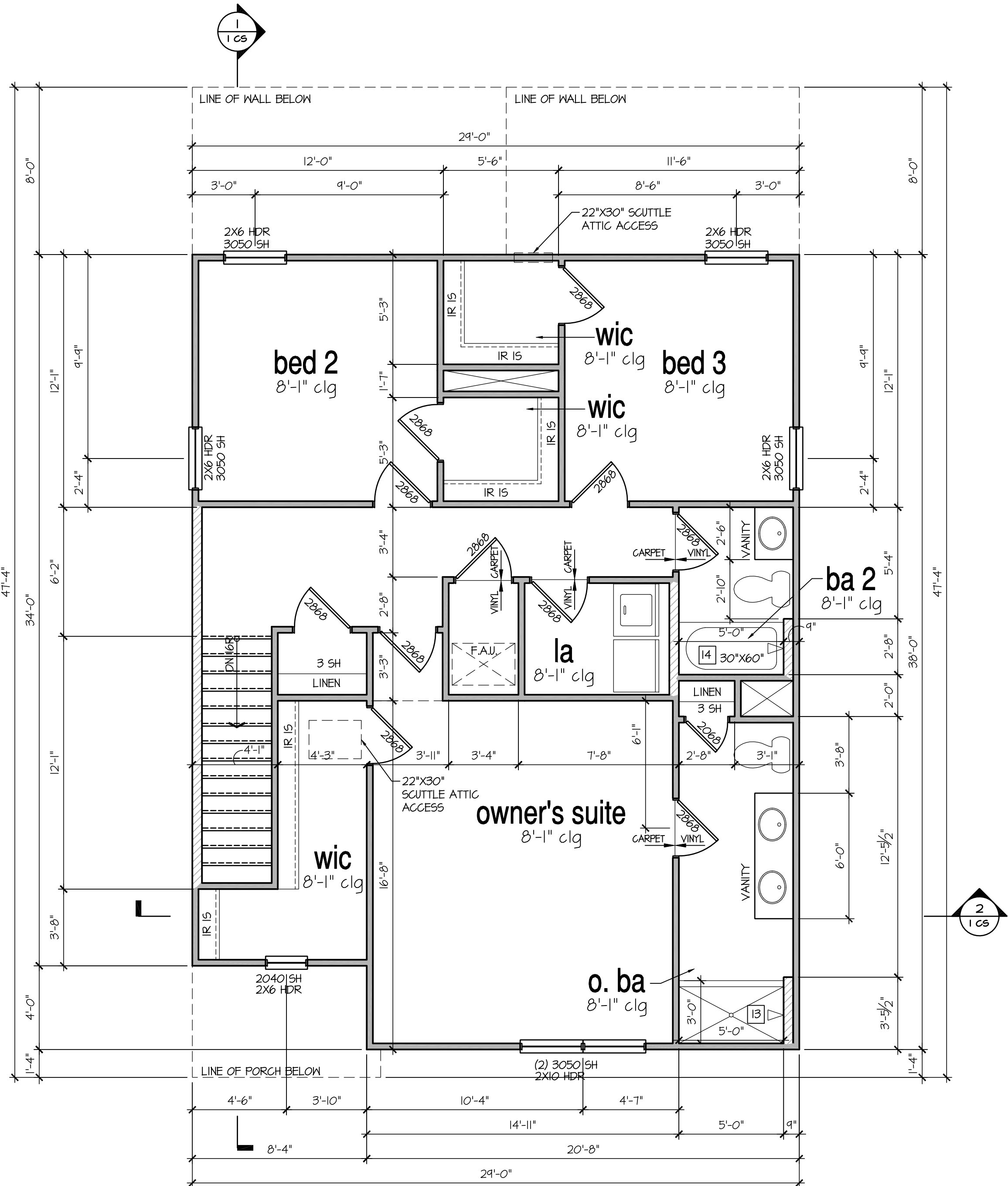
ALL DIMENSIONS TO WINDOWS AND DOORS ARE TO CENTERLINE.

WALL LEGEND:

 FULL HEIGHT 2X4 WOOD STUD PARTITION	 FULL HEIGHT 2X6 WOOD STUD PARTITION
 STUD WALL BELOW BRICK / STONE VENEER	 STUD WALL BELOW HEIGHT AND STUD SIZE AS NOTED
 LOW GYPSUM BOARD WALL HEIGHT AND STUD SIZE AS NOTED	 DRYWALL OPENING. HEIGHT AS NOTED ON PLAN.

KEY NOTES:

- FIRE PROTECTION:
- HOUSE TO GARAGE FIRE SEPARATION. GARAGE/HOUSE SEPARATION AT VERTICAL SURFACES SHALL BE PROTECTED WITH ONE (1) LAYER 1/2" GYPSUM BOARD. (PER LOCAL CODES)  
GARAGE/HOUSE SEPARATION AT HORIZONTAL SURFACES SHALL BE PROTECTED WITH ONE (1) LAYER 5/8" TYPE 'X' GYPSUM BOARD. (PER LOCAL CODES)
  - HOUSE TO GARAGE DOOR SEPARATION. PROVIDE 1-3/8" SOLID CORE DOOR OR APPROVED 20 MINUTE RATED DOOR. (PER LOCAL CODES)
  - BENEATH STAIRS AND LANDINGS. 1/2" GYPSUM BOARD ON WALLS AND CEILING OF ENCLOSED ACCESSIBLE AREAS. (PER LOCAL CODES)
- MEP'S:
- GAS WATER HEATER ON 18" HIGH PLATFORM. (PER LOCAL CODES)
  - FAU 8'X8' PLATFORM. VERIFY WITH TRUSS MANUFACTURER. (6'-6" MIN. CLEAR HEIGHT TO HORIZONTAL MEMBERS, 2"X6" OVER 2"X4" BOTTOM CHORD. OF TRUSS, VERIFY W/ TRUSSES.)
  - A/C CONDENSER PAD. (VERIFY)
  - PRE-FABRICATED METAL FIREPLACE. INSTALL PER MANUFACTURER'S WRITTEN INSTRUCTIONS.
  - ATTIC ACCESS LARGE ENOUGH TO REMOVE LARGEST PIECE OF EQUIPMENT BUT NOT LESS THAN 30"X22". FIRE RATED ACCESS AS NOTED. (PER LOCAL CODES)  
ATTIC ACCESS LADDER, VERIFY LOCATION AND SIZE WITH TRUSSES. (25 1/2" X 54" SIZE.)
- TYPICALS:
- TEMPERED SAFETY GLASS. (PER LOCAL CODES)
  - PLYWOOD SHELF ABOVE WITH DRYWALL FINISH OVER. HEIGHT AS NOTED.
  - HALF WALL, HEIGHT AS NOTED.
  - INTERIOR SOFFITS: FFL = T'-6" U.N.O. SFL = T'-6" U.N.O.
- BATHS:
- SHOWER. TEMPERED GLASS ENCLOSURE.
  - TUB-SHOWER COMBO. TEMPERED GLASS ENCLOSURE.
  - CERAMIC TILE SHOWER AND FLOOR. TEMPERED GLASS ENCLOSURE.
  - ACRYLIC TUB W/ CERAMIC PLATFORM
- KITCHEN:
- 30" SLIDE-IN ELECTRICAL RANGE W/ HOOD AND MICRO ABV. VENT PER MANUFACTURER'S WRITTEN INSTRUCTIONS.
  - 30" GAS COOKTOP AND HOOD. VENT PER MANUFACTURER'S WRITTEN INSTRUCTIONS.
  - ELECTRIC OVEN WITH MICROWAVE OVEN.



2nd Floor Plan 'G'

SCALE: 1/4"=1'-0" AT 22"X34" LAYOUT 1/8"=1'-0" AT 11"X17" LAYOUT

NO.	DATE:	REVISION:
1	05.02.24	

PROFESSIONAL SEAL:

PROJECT TITLE:

30' Series

CLIENTS NAME:



PROJECT NO: GMD-GA14065

SHEET TITLE:  
'DARWIN'  
2nd FLOOR  
PLAN '3DWF-G'

PRINT DATE:  
May 02, 2024

SHEET NO:  
5 G

FOR  
CONSTRUCTION