

ABBREVIATIONS		
ABV ABOVE	L LENGTH	
AC AIR CONDITIONING	LA LAUNDRY	
ADJ AREA DRAIN	LAV LAVATORY	
ADJ ADJUSTABLE	LVR LOUVER	
ALT ALTERNATE	MAX MAXIMUM	
ALUM ALUMINUM	MCH MECHANICAL	
ARCH ARCHITECTURAL	MFG MANUFACTURER	
BA BATHROOM	MIN MINIMUM	
BD BOARD	MISC MISCELLANEOUS	
BF BIFOLD (DOOR)	N NORTH	
BLDG BUILDING	N.T.S. NOT TO SCALE	
BLK BLOCK (CMU)	O.S.D. OVERHEAD GARAGE DOOR	
BLM BELON	OH OVERHEAD	
BM BEAM	OPT OPTIONAL	
BP BI-PASS (DOOR)	PAR PARALLEL	
BOT BOTTOM	P.B. PUSH BUTTON	
BTWN BETWEEN	PDR POWDER	
CAB CABINET	PED PEDESTAL	
CER CERAMIC	PL PLATE	
C.I. CONTROL JOINT OR CONSTRUCTION JOINT	PR PAIR	
CL CLOSET OR CENTER LINE	P.T. PRESSURE TREATED WOOD	
CLS CEILING	P.V.G. POLYVINYL CHLORIDE PIPE	
CLR CLEAR	P.V.M.T. PAVEMENT	
CMU CONCRETE MASONRY UNIT	P.W. PRE-WIRE	
COL COLUMN	PND PLYNWOOD	
CONC CONCRETE	R RISER	
C CARPET	RAG RETURN AIR GRILL	
CR CORROSION RESISTANT	REF REFERENCE	
CSMT CASEMENT	REFR REFRIGERATOR	
C.T. CERAMIC TILE	REQ REQUIRED	
D DRYER	S SOUTH	
DBL DOUBLE	SD SMOKE DETECTOR	
DH DOUBLE HUNG	S.F. SQUARE FEET	
DIM DIMENSION	S.G.D. SLIDING GLASS DOOR	
DISP DISPOSAL	SH SINGLE HUNG OR SHELF	
DN DOWN	SL SIMILAR	
DR DOOR	SLOPE / SLIDING	
DS DOWNSPOUT	S.S. SHELF AND POLE	
DW DISH WASHER	SPEC SPECIFICATIONS	
DWG DRAWING	STD STANDARD	
E EAST	STR STRUCTURAL	
EA EACH	SQ SQUARE	
ELEV ELEVATION	SYM SYMBOL	
ELEC ELECTRICAL	S4S SMOOTH FOUR SIDES	
EQ EQUAL	T TREAD (AT STAIRS) OR TILE	
EXT EXTERIOR	T.B. TOWEL BAR	
FAU FORCED AIR UNIT	TEMP TEMPERED (GLASS)	
F.G. FLOOR CHANGE	T&G TONGUE & GROOVE	
F.D. FLOOR DRAIN	T.O.C. TOP OF CURB	
FFL FINISH FLOOR LINE	TV TELEVISION	
F.G. FINISHED GRADE	TYP TYPICAL	
FLR FLOOR(ING)	UNO. UNLESS NOTED OTHERWISE	
FL FLOURESCENT (LIGHT)	V.B. VAPOR BARRIER	
FND FOUNDATION	VERT VERTICAL	
F.O.S. FACE OF STUD	V.T.R. VENT THRU ROOF	
FTG FOOTING	W WASHING MACHINE	
FX FIXED GLASS	WD WOOD	
GALV GALVANIZED	WDM WINDOM	
GAR GARAGE	WH WATER HEATER	
G.B. GYPSUM BOARD	W HROUGHT IRON	
GD GRADE OR GRADING	WIC WALK-IN CLOSET	
G.D.O. GARAGE DOOR OPENER	W NO WITH OR WITHOUT	
GFI GROUND FAULT INTERRUPTER	WP WATERPROOFING	
GL GLASS OR GLAZING	WM WELDED WIRE MESH	
GYP BD GYPSUM BOARD	IL PROPERTY LINE	
HD HOSE BIBB	Ø ROUND / DIAMETER	
HD HEAD OR HARD	4 AND	
HDR HEADER	CL CENTERLINE	
HGT HEIGHT	# POUND / NUMBER	
HVAC HEATING/VENTILATING/AIR COND.		
HWD HARDWOOD		
INT INTERIOR		
JST JOIST		
JT JOINT		
KIT KITCHEN		

BUILDING CODE COMPLIANCE / PROJECT INFORMATION 2018	
ALL CONSTRUCTION TO COMPLY WITH LOCAL CODES AND ORDINANCES CURRENTLY IN USE WITH THE LOCAL JURISDICTION.	
APPLICABLE CODES: FOLLOW ALL APPLICABLE STATE AND LOCAL CODES, ALABAMA STATE SUPPLEMENTS AND AMENDMENTS 2012	
2018- INTERNATIONAL RESIDENTIAL CODE (BUILDING)	
2018- INTERNATIONAL FIRE PREVENTION CODE	
2018- INTERNATIONAL PLUMBING CODE (BUILDING)	
2018- INTERNATIONAL MECHANICAL CODE (BUILDING)	
2018- INTERNATIONAL FUEL GAS CODE (BUILDING)	
2018- INTERNATIONAL ENERGY CONSERVATION CODE (BUILDING)	
2017- NATIONAL ELECTRICAL CODE	
PRODUCT: SINGLE FAMILY RESIDENCE	
OCCUPANCY CLASSIFICATION RESIDENTIAL R-3	
CONSTRUCTION TYPE: TYPE VB	

INDEX			
MODEL 'TAYLOR'			
0	TITLE SHEET / COVER SHEET	1 A 5	BUILDING SECTIONS
1 A	FRONT ELEVATION 'A'-1	2,1	ELEVATION OPTIONS
1.5 A	ROOF PLAN 'A'		
2 A	SIDE AND REAR ELEVATIONS 'A'	6	1ST FLOOR UTILITY PLAN
3 M5 A	MONOLITHIC SLAB PLAN 'A'	7	2ND FLOOR UTILITY PLAN
3 SW A	STEM WALL PLAN 'A'		
4 A	1ST FLOOR PLAN 'A'	19	ARCHITECTURAL SHEETS
5 A	2ND FLOOR PLAN 'A'		
1 B	FRONT ELEVATION 'B'-1		
1.5 B	ROOF PLAN 'B'		
2 B	SIDE AND REAR ELEVATIONS 'B'		
3 M5 B	MONOLITHIC SLAB PLAN 'B'		
3 SW B	STEM WALL PLAN 'B'		
4 B	1ST FLOOR PLAN 'B'		
5 B	2ND FLOOR PLAN 'B'		
ALL CONSULTANT DRAWINGS ACCOMPANYING THESE ARCHITECTURAL DRAWINGS HAVE NOT BEEN PREPARED BY OR UNDER THE DIRECTION OF GMD DESIGN GROUP, INC. GMD DESIGN GROUP INC. THEREFORE ASSUMES NO LIABILITY FOR THE COMPLETENESS OR CORRECTNESS OF THESE DRAWINGS.			

EXPRESS HOMES

30' SERIES

MODEL 'TAYLOR' - LH

PEAVINE CROSSINGS

PLAN CHANGES:			
DATE:	DESCRIPTION:		
05.02.24	INITIAL PLAN RELEASE		
CONSULTANTS:			
BUILDER:	DESIGNER:		
DR HORTON 2188 PARKWAY LAKE DRIVE SUITE 200 HOOVER, AL PHONE: (770) 730-7900	GMD DESIGN GROUP 1138 SATELLITE BLVD. STE 300 SUWANEE, GA. 30024 PHONE: (770) 375-7351		
CONTACT: GENE VANDEVENDER EMAIL: GVANDEVENDER@DRHORTON.COM	CONTACT: DONALD J. MCGRATH EMAIL: DONNIE@GMDDESIGNGROUP.COM		

GENERAL NOTES DESIGNER:		BUILDER SET:	AREA CALCULATIONS:
THESE DOCUMENTS ARE THE PROPERTY OF THE DESIGNER AND SHALL NOT BE COPIED, DUPLICATED, ALTERED, MODIFIED OR REVISED IN ANY WAY WITHOUT THE EXPRESSED WRITTEN APPROVAL OF THE DESIGNER. CONTRACTOR SHALL VERIFY ALL CONDITIONS AND DIMENSIONS AT THE SITE AND ALL INCONSISTENCIES SHALL BE BROUGHT TO THE ATTENTION OF THE DEVELOPER AND THE DESIGNER BEFORE PROCEEDING WITH WORK. ANY ERRORS OR OMISSIONS FOUND IN THESE DRAWINGS SHALL BE BROUGHT TO DEVELOPERS AND DESIGNERS ATTENTION IMMEDIATELY. DO NOT SCALE DRAWINGS. WRITTEN DIMENSIONS TAKE PRECEDENCE OVER SCALED DIMENSIONS. ALL DIMENSIONS ARE TO FACE OF STUD OR TO FACE OF FRAMING UNLESS OTHERWISE NOTED. ALL TRUSS DRAWINGS TO BE REVIEWED AND APPROVED BY THE STRUCTURAL ENGINEER PRIOR TO ISSUANCE OF BUILDING PERMIT. ALL OR EQUAL SUBSTITUTIONS MUST BE SUBMITTED TO AND APPROVED BY CITY BUILDING OFFICIAL PRIOR TO INSTALLATION. ALL ANGLED PARTITIONS ARE 45 DEGREES UNLESS OTHERWISE NOTED. PROVIDE FIREBLOCKING. (PER LOCAL CODES) ALL ELECTRICAL AND MECHANICAL EQUIPMENT AND METERS ARE SUBJECT TO RELOCATION DUE TO FIELD CONDITIONS, CONTRACTOR TO VERIFY.		THE BUILDER SHALL FURNISH ANY AND ALL REPORTS RECEIVED FROM THE GEOTECHNICAL ENGINEER (SOILS REPORT), ON THE STUDY OF THE PROPOSED SITE, TO THE DESIGNER, STRUCTURAL ENGINEER, AND GENERAL CONTRACTOR. IN THE EVENT THE GEOTECHNICAL REPORTS DO NOT EXIST, THE SOILS CONDITION SHALL BE ASSUMED TO BE A MINIMUM DESIGN SOIL. PRESSURE STATED BY THE STRUCTURAL ENGINEER OF RECORD FOR THE PURPOSE OF STRUCTURAL DESIGN. GENERAL CONTRACTOR SHALL ASSURE THE SOIL CONDITIONS MEET OR EXCEED THE CRITERIA. ALL WORK PERFORMED BY THE GENERAL CONTRACTOR SHALL COMPLY AND CONFORM WITH LOCAL AND STATE BUILDING CODES, ORDINANCES AND REGULATIONS, ALONG WITH ALL OTHER AUTHORITIES HAVING JURISDICTION. THE GENERAL CONTRACTOR IS RESPONSIBLE TO BE AWARE OF THESE REQUIREMENTS AND GOVERNING REGULATIONS. PROVIDE AN APPROVED WASHER DRAIN PAN AT SECOND FLOOR ONLY THAT DRAINS TO EXTERIOR. WINDOW SUPPLIER TO VERIFY AT LEAST ONE WINDOW IN ALL BEDROOMS TO HAVE A CLEAR EGRESS OPENING OF 5.7 SQ FT WITH MIN. DIMENSION OF 24" IN HEIGHT AND 20" IN WIDTH. SILL HEIGHT NOT GREATER THAN 44" ABOVE FLOOR. (PER LOCAL CODES) ALL HANDRAIL BALLUSTERS TO BE SPACED SUCH THAT A 4" SPHERE CANNOT PASS BETWEEN BALLUSTERS. (PER LOCAL CODES) PROVIDE STAIR HANDRAILS AND GUARDRAILS PER LOCAL CODES	THE SCOPE OF THIS SET OF PLANS IS TO PROVIDE A "BUILDER'S SET" OF CONSTRUCTION DOCUMENTS AND GENERAL NOTES HEREINAFTER REFERRED TO AS "PLANS". THIS SET OF PLANS IS SUFFICIENT TO OBTAIN A BUILDING PERMIT; HOWEVER, ALL MATERIALS AND METHODS OF CONSTRUCTION NECESSARY TO COMPLETE THE PROJECT ARE NOT NECESSARILY DESCRIBED. THE PLANS DELINEATE AND DESCRIBE ONLY LOCATIONS, DIMENSIONS, TYPES OF MATERIALS, AND GENERAL METHODS OF ASSEMBLING OR FASTENING. THEY ARE NOT INTENDED TO SPECIFY PARTICULAR PRODUCTS OR OTHER METHODS OF ANY SPECIFIC MATERIALS, PRODUCT OR METHOD. THE IMPLEMENTATION OF THE PLANS REQUIRES A CLIENT / CONTRACTOR THOROUGHLY KNOWLEDGEABLE WITH THE APPLICABLE BUILDING CODES AND METHODS OF CONSTRUCTION SPECIFIC TO THIS PRODUCT TYPE AND TYPE OF CONSTRUCTION. CONSTRUCTION REQUIREMENTS AND QUALITY: PROVIDE WORK OF THE SPECIFIC QUALITY, WHERE QUALITY LEVEL IS NOT INDICATED, PROVIDE WORK OF QUALITY CUSTOMARY IN SIMILAR TYPES OF WORK. WHERE THE PLANS AND SPECIFICATIONS, CODES, LAWS, REGULATIONS, MANUFACTURER'S RECOMMENDATIONS OR INDUSTRY STANDARDS REQUIRE WORK OF HIGHER QUALITY OR PERFORMANCE, PROVIDE WORK COMPLYING WITH THOSE REQUIREMENTS AND QUALITY. WHERE TWO OR MORE QUALITY PROVISIONS OF THOSE REQUIREMENTS CONFLICT WITH THE MOST STRINGENT REQUIREMENT; WHERE REQUIREMENTS ARE DIFFERENT BUT APPARENTLY EQUAL, AND WHERE IT IS UNCERTAIN WHICH REQUIREMENT IS MOST STRINGENT, OBTAIN CLARIFICATION FROM THE GMD DESIGN GROUP BEFORE PROCEEDING.
MODEL 'TAYLOR' SQUARE FOOTAGES			
AREA		ELEV 'A'	ELEV 'B'
1st FLOOR		620 SF	620 SF
2nd FLOOR		993 SF	993 SF
TOTAL LIVING		1613 SF	1613 SF
GARAGE		416 SF	416 SF
PORCH		42 SF	42 SF
OPT. COVERED PORCH		80 SF	80 SF

NO:	DATE:	REVISION:
△	05.04.24	

PROFESSIONAL SEAL:

PROJECT TITLE:

30' Series

CLIENTS NAME:



PROJECT NO: GMD14065

SHEET TITLE:

TITLE SHEET

PRINT DATE:

May 02, 2024

SHEET NO:

0

FOR CONSTRUCTION

NOTES: IRC

- GRADE CONDITIONS MAY VARY FOR INDIVIDUAL SITE FROM THAT SHOWN. BUILDER SHALL VERIFY AND COORDINATE PER ACTUAL SITE CONDITIONS.

- WINDOW HEAD HEIGHTS:
1ST FLOOR = 7'-0" U.N.O. ON ELEVATIONS.
2ND FLOOR = 7'-0" U.N.O. ON ELEVATIONS.

- ROOFING: PITCHED SHINGLES PER DEVELOPER.

- WINDOWS: MANUFACTURER PER DEVELOPER. DIVIDED LITES AS SHOWN ON THE EXTERIOR ELEVATIONS.

- ENTRY DOOR: AS SELECTED BY DEVELOPER.

- GARAGE DOORS: AS SELECTED BY DEVELOPER, RAISED PANEL AS SHOWN.

- CHIMNEY AS OCCURS: TOP OF CHIMNEYS TO BE A MINIMUM OF 24" ABOVE ANY ROOF WITHIN 10'-0" OF CHIMNEY.

- ALL EXTERIOR MATERIALS TO BE INSTALLED PER MANUFACTURER'S WRITTEN INSTRUCTIONS.

- PROTECTION AGAINST DECAY:
(ALL PORTIONS OF A PORCH, SCREEN PORCH OR DECK FROM THE BOTTOM OF THE HEADER DOWN, INCLUDING POST, RAILS, PICKETS, STEPS AND FLOOR STRUCTURE.)

KEY NOTES:

MASONRY:

1 ADHERED STONE VENEER AS SELECTED BY DEVELOPER. HEIGHT AS NOTED.

2 MASONRY FULL BRICK AS SELECTED BY DEVELOPER. HEIGHT AS NOTED.

3 MASONRY FULL STONE AS SELECTED BY DEVELOPER. HEIGHT AS NOTED.

4 8" SOLDIER COURSE.

5 RANLOCK COURSE

6 DECORATIVE KEY. SEE DETAIL.

TYPICALS:

7 CORROSION RESISTANT SCREEN LOUVERED VENTS, SIZE AS NOTED.

8 CODE APPROVED TERMINATION CHIMNEY CAP.

9 CORROSION RESISTANT ROOF TO WALL FLASHING. CODE COMPLIANT FLASHING MUST BE INSTALLED AT ALL ROOF/WALL INTERSECTIONS.

SIDING:

10 STANDING SEAM METAL ROOF, INSTALL PER MANUFACTURER'S WRITTEN INSTRUCTIONS.

11 DECORATIVE WROUGHT IRON. SEE DETAILS.

12 FIBER CEMENT SHAKE SIDING PER DEVELOPER
W/ 5/4x4 CORNER TRIM BOARDS.

13 FIBER CEMENT LAP SIDING PER DEVELOPER
W/ 5/4x4 CORNER TRIM BOARDS.

14 FIBER CEMENT WAVY SIDING PER DEVELOPER
W/ 5/4x4 CORNER TRIM BOARDS.

15 FIBER CEMENT PANEL SIDING W/ 1X3 BATTS AT 12" O.C.
(VINYL BOARD AND BATT SIDING)

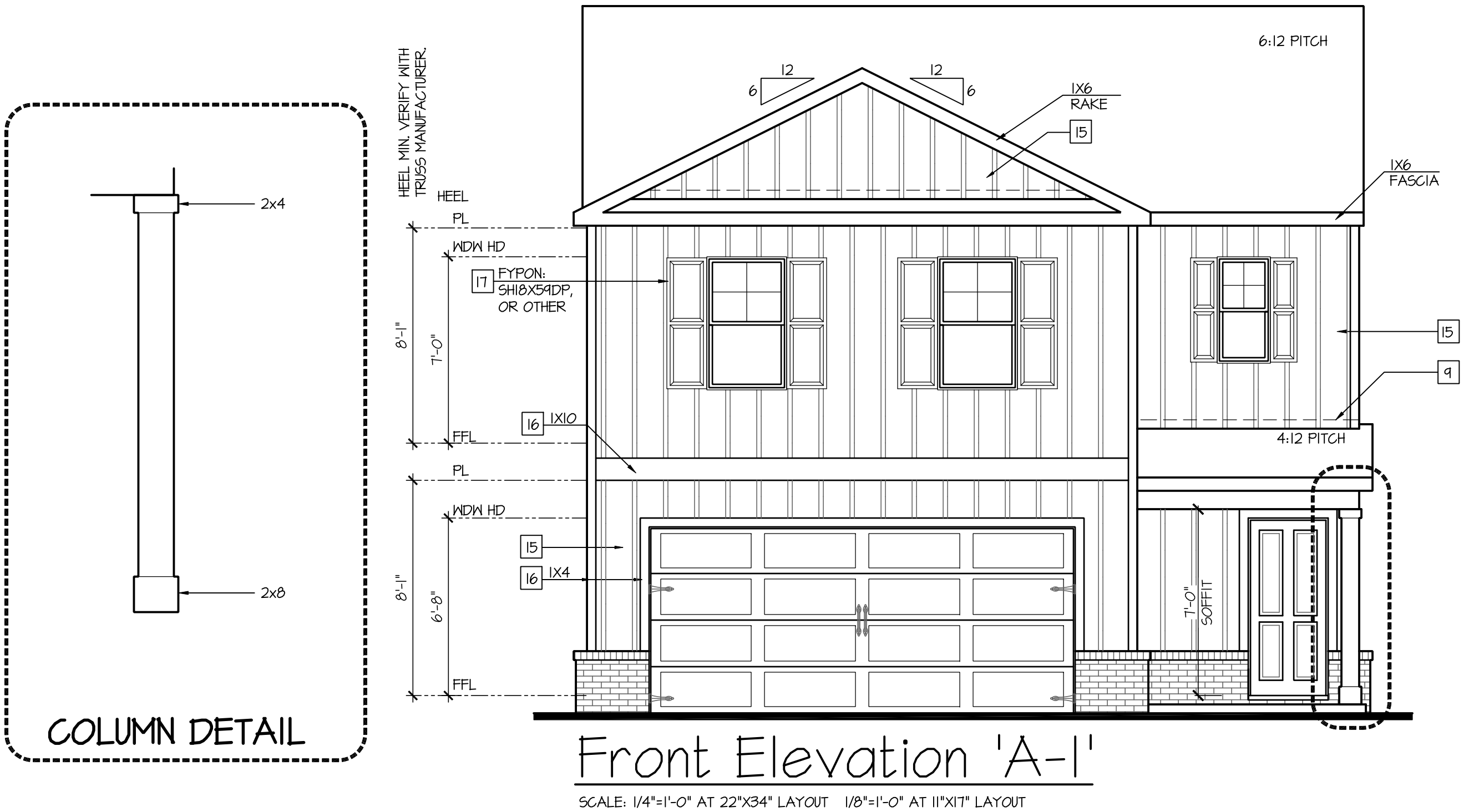
16 1X FIBER CEMENT TRIM OR EQUAL, U.N.O. SIZE AS NOTED

17 FALSE WOOD SHUTTERS, TYPE AS SHOWN. SIZE AS NOTED.

ALL WINDOWS WHOSE OPENING IS LESS THAN 24" ABOVE THE FINISH FLOOR AND WHOSE OPENING IS GREATER THAN 72" ABOVE THE OUTSIDE WALKING SURFACE MUST HAVE WINDOW OPENING LIMITING DEVICES COMPLYING WITH LOCAL CODES

AVAILABLE WITH OPTIONAL
9'-1" FIRST FLOOR PLATE

NOTES AT OPT 9'-1" PLT:
- WDW HT SET AT 7'-6"
- INTERIOR SOFFITS AT 8'-0"
- EXTERIOR SOFFITS AT 8'-0"



NO.	DATE:	REVISION:
<div>Δ1</div>	05.04.24	

PROFESSIONAL SEAL:

PROJECT TITLE:

30' Series

CLIENTS NAME:



PROJECT NO: GMD14065

SHEET TITLE:

'TAYLOR'
EXTERIOR
ELEVATIONS
'3EFF-A'

PRINT DATE:

May 02, 2024

SHEET NO:

1A

FOR
CONSTRUCTION

NOTES: IRC

- GRADE CONDITIONS MAY VARY FOR INDIVIDUAL SITE FROM THAT SHOWN. BUILDER SHALL VERIFY AND COORDINATE PER ACTUAL SITE CONDITIONS.

- WINDOW HEAD HEIGHTS:
1ST FLOOR = 7'-0" UNO. ON ELEVATIONS.
2ND FLOOR = 7'-0" UNO. ON ELEVATIONS.

- ROOFING: PITCHED SHINGLES PER DEVELOPER.

- WINDOWS: MANUFACTURER PER DEVELOPER. DIVIDED LITES AS SHOWN ON THE EXTERIOR ELEVATIONS

- ENTRY DOOR: AS SELECTED BY DEVELOPER.

- GARAGE DOORS: AS SELECTED BY DEVELOPER, RAISED PANEL AS SHOWN.

- CHIMNEY AS OCCURS: TOP OF CHIMNEYS TO BE A MINIMUM OF 24" ABOVE ANY ROOF WITHIN 10'-0" OF CHIMNEY.

- ALL EXTERIOR MATERIALS TO BE INSTALLED PER MANUFACTURER'S WRITTEN INSTRUCTIONS.

- PROTECTION AGAINST DECAY:
(ALL PORTIONS OF A PORCH, SCREEN PORCH OR DECK FROM THE BOTTOM OF THE HEADER DOWN, INCLUDING POST, RAILS, PICKETS, STEPS AND FLOOR STRUCTURE.)

KEY NOTES:

MASONRY:

1

ADHERED STONE VENEER AS SELECTED BY DEVELOPER. HEIGHT AS NOTED.

2

MASONRY FULL BRICK AS SELECTED BY DEVELOPER. HEIGHT AS NOTED.

3

MASONRY FULL STONE AS SELECTED BY DEVELOPER. HEIGHT AS NOTED.

4

8" SOLDIER COURSE.

5

RONLOCK COURSE

6

DECORATIVE KEY. SEE DETAIL.

TYPICALS:

1

CORROSION RESISTANT SCREEN LOUVERED VENTS, SIZE AS NOTED.

8

CODE APPROVED TERMINATION CHIMNEY CAP.

9

CORROSION RESISTANT ROOF TO WALL FLASHING. CODE COMPLIANT FLASHING MUST BE INSTALLED AT ALL ROOF/WALL INTERSECTIONS.

10

STANDING SEAM METAL ROOF, INSTALL PER MANUFACTURER'S WRITTEN INSTRUCTIONS.

11

DECORATIVE WROUGHT IRON. SEE DETAILS.

SIDING:

2

FIBER CEMENT SHAKE SIDING PER DEVELOPER
W/ 5/4x4 CORNER TRIM BOARDS.

3

FIBER CEMENT LAP SIDING PER DEVELOPER
W/ 5/4x4 CORNER TRIM BOARDS.

4

FIBER CEMENT NAVY SIDING PER DEVELOPER
W/ 5/4x4 CORNER TRIM BOARDS.

5

FIBER CEMENT PANEL SIDING W/ 1X3 BATTS AT 12" O.C.
(VINYL BOARD AND BATT SIDING)

16

1X FIBER CEMENT TRIM OR EQUAL, UNO. SIZE AS NOTED

17

FALSE WOOD SHUTTERS, TYPE AS SHOWN. SIZE AS NOTED.

ALL WINDOWS WHOSE OPENING IS LESS THAN 24" ABOVE THE FINISH FLOOR AND WHOSE OPENING IS GREATER THAN 12" ABOVE THE OUTSIDE WALKING SURFACE MUST HAVE WINDOW OPENING LIMITING DEVICES COMPLYING WITH LOCAL CODES

AVAILABLE WITH OPTIONAL
9'-1" FIRST FLOOR PLATE

NOTES AT OPT 9'-1" PLT:
- WDW HT SET AT 7'-6"
- INTERIOR SOFFITS AT 8'-0"
- EXTERIOR SOFFITS AT 8'-0"

Left Elevation 'A'

SCALE: 1/4"=1'-0" AT 22"X34" LAYOUT 1/8"=1'-0" AT 11"X17" LAYOUT

Right Elevation 'A'

SCALE: 1/4"=1'-0" AT 22"X34" LAYOUT 1/8"=1'-0" AT 11"X17" LAYOUT

Rear Elevation 'A'

SCALE: 1/4"=1'-0" AT 22"X34" LAYOUT 1/8"=1'-0" AT 11"X17" LAYOUT

NO.	DATE:	REVISION:
1	05.04.24	

PROFESSIONAL SEAL:

PROJECT TITLE:

30' Series

CLIENTS NAME:

PROJECT NO: GMD14065

SHEET TITLE:
'TAYLOR'
EXTERIOR
ELEVATIONS
'3EFF-A'

PRINT DATE:
May 02, 2024

SHEET NO:

2 A

FOR
CONSTRUCTION

9'-1" STAIR NOTE:
(USE 14" T.J.I WITH 3/4" PLYWOOD SUBFLOOR)
16 TREADS AT 10" EACH VERIFY
17 RISERS AT +/- 7.28" = 123 3/4" TOTAL
RISE VERIFY

- FOR ADDITIONAL NOTES SEE GENERAL NOTES ON TITLE SHEET AND DETAILS.

- WINDOW HEAD HEIGHTS:
1ST FLOOR = 7'-0" U.N.O. ON ELEVATIONS.
2ND FLOOR = 7'-0" U.N.O. ON ELEVATIONS.

ALL DIMENSIONS TO WINDOWS AND DOORS ARE TO CENTERLINE.

WALL LEGEND:

FULL HEIGHT
2X4 WOOD STUD PARTITION

BRICK / STONE VENEER

LOW GYPSUM BOARD WALL
HEIGHT AND STUD SIZE AS NOTED

FULL HEIGHT
2X6 WOOD STUD PARTITION

STUD WALL BELOW
HEIGHT AND STUD SIZE AS NOTED

DRYWALL OPENING HEIGHT
AS NOTED ON PLAN.

KEY NOTES:

FIRE PROTECTION:

1

HOUSE TO GARAGE FIRE SEPARATION. GARAGE/HOUSE SEPARATION AT VERTICAL SURFACES SHALL BE PROTECTED WITH ONE (1) LAYER 1/2" GYPSUM BOARD. (PER LOCAL CODES)

GARAGE/HOUSE SEPARATION AT HORIZONTAL SURFACES SHALL BE PROTECTED WITH ONE (1) LAYER 5/8" TYPE 'X' GYPSUM BOARD. (PER LOCAL CODES)

2

HOUSE TO GARAGE DOOR SEPARATION. PROVIDE 1-3/8" SOLID CORE DOOR OR APPROVED 20 MINUTE RATED DOOR. (PER LOCAL CODES)

3

BENEATH STAIRS AND LANDINGS, 1/2" GYPSUM BOARD ON WALLS AND CEILING OF ENCLOSED ACCESSIBLE AREAS. (PER LOCAL CODES)

MEP'S

4

GAS WATER HEATER ON 18" HIGH PLATFORM. (PER LOCAL CODES)

5

FAU 8'X8' PLATFORM. VERIFY WITH TRUSS MANUFACTURER.
(6'-6" MIN. CLEAR HEIGHT TO HORIZONTAL MEMBERS,
2"X6" OVER 2"X4" BOTTOM CHORD. OF TRUSS, VERIFY W/ TRUSSES.)

6

AVC CONDENSER PAD. (VERIFY)

1

PRE-FABRICATED METAL FIREPLACE.
INSTALL PER MANUFACTURER'S WRITTEN INSTRUCTIONS.

8

ATTIC ACCESS LARGE ENOUGH TO REMOVE LARGEST PIECE OF EQUIPMENT BUT NOT LESS THAN 30"x22". FIRE RATED ACCESS AS NOTED. (PER LOCAL CODES)
ATTIC ACCESS LADDER, VERIFY LOCATION AND SIZE WITH TRUSSES.
(25 1/2" X 54" SIZE.)

TYPICALS:

9

TEMPERED SAFETY GLASS. (PER LOCAL CODES)

10

PLYWOOD SHELF ABOVE WITH DRYWALL FINISH OVER. HEIGHT AS NOTED.

11

HALF WALL, HEIGHT AS NOTED.

12

INTERIOR SOFFITS: FFL = 7'-6" U.N.O. SFL = 7'-6" U.N.O.

BATHS:

13

SHOWER. TEMPERED GLASS ENCLOSURE.

14

TUB-SHOWER COMBO. TEMPERED GLASS ENCLOSURE.

15

CERAMIC TILE SHOWER AND FLOOR. TEMPERED GLASS ENCLOSURE.

KITCHEN:

17

30" SLIDE-IN ELECTRICAL RANGE W/ HOOD AND MICRO ABV.
VENT PER MANUFACTURER'S WRITTEN INSTRUCTIONS.

18

30" GAS COOKTOP AND HOOD.
VENT PER MANUFACTURER'S WRITTEN INSTRUCTIONS.

19

ELECTRIC OVEN WITH MICROWAVE OVEN.

The 2nd Floor Plan 'A' shows a rectangular layout with overall dimensions of 29'-0" by 30'-0". The plan includes four bedrooms (bed 1, bed 2, bed 3, bed 4), two bathrooms (ba 1, ba 2), a kitchen, a living area (la), and a washer/dryer area. Dimensions for rooms and walls are provided. Notes include: 'PATIO BELOW' at the top; 'LINE OF PORCH BELOW' on the right; 'ATTIC ACCESS, PULL DOWN STAIRS' near bed 3; '3" SH LINEN' near the stairs; '40" LOW WALL' near the stairs; 'PROVIDE WASHER PAN' near the kitchen; and '20" HO SH' near the kitchen. A north arrow is located on the left side of the plan.

NO.	DATE:	REVISION:
1	05.04.24	

PROFESSIONAL SEAL:

PROJECT TITLE:

30' Series

CLIENTS NAME:

PROJECT NO: GMD14065

SHEET TITLE:

'TAYLOR'
2nd FLOOR
PLAN '3EFF-A'

PRINT DATE:

May 02, 2024

SHEET NO:

5 A

FOR
CONSTRUCTION

NOTES: IRC

- GRADE CONDITIONS MAY VARY FOR INDIVIDUAL SITE FROM THAT SHOWN. BUILDER SHALL VERIFY AND COORDINATE PER ACTUAL SITE CONDITIONS.

- WINDOW HEAD HEIGHTS:
1ST FLOOR = 7'-0" U.N.O. ON ELEVATIONS.
2ND FLOOR = 7'-0" U.N.O. ON ELEVATIONS.

- ROOFING: PITCHED SHINGLES PER DEVELOPER.

- WINDOWS: MANUFACTURER PER DEVELOPER. DIVIDED LITES AS SHOWN ON THE EXTERIOR ELEVATIONS

- ENTRY DOOR: AS SELECTED BY DEVELOPER.

- GARAGE DOORS: AS SELECTED BY DEVELOPER, RAISED PANEL AS SHOWN.

- CHIMNEY AS OCCURS: TOP OF CHIMNEYS TO BE A MINIMUM OF 24" ABOVE ANY ROOF WITHIN 10'-0" OF CHIMNEY.

- ALL EXTERIOR MATERIALS TO BE INSTALLED PER MANUFACTURER'S WRITTEN INSTRUCTIONS.

- PROTECTION AGAINST DECAY:
(ALL PORTIONS OF A PORCH, SCREEN PORCH OR DECK FROM THE BOTTOM OF THE HEADER DOWN, INCLUDING POST, RAILS, PICKETS, STEPS AND FLOOR STRUCTURE.)

KEY NOTES:

MASONRY:

1 ADHERED STONE VENEER AS SELECTED BY DEVELOPER. HEIGHT AS NOTED.

2 MASONRY FULL BRICK AS SELECTED BY DEVELOPER. HEIGHT AS NOTED.

3 MASONRY FULL STONE AS SELECTED BY DEVELOPER. HEIGHT AS NOTED.

4 8" SOLDIER COURSE.

5 ROWLOCK COURSE

6 DECORATIVE KEY. SEE DETAIL.

TYPICALS:

7 CORROSION RESISTANT SCREEN LOUVERED VENTS, SIZE AS NOTED.

8 CODE APPROVED TERMINATION CHIMNEY CAP.

9 CORROSION RESISTANT ROOF TO WALL FLASHING. CODE COMPLIANT FLASHING MUST BE INSTALLED AT ALL ROOF/WALL INTERSECTIONS.

10 STANDING SEAM METAL ROOF, INSTALL PER MANUFACTURER'S WRITTEN INSTRUCTIONS.

11 DECORATIVE WROUGHT IRON. SEE DETAILS.

SIDING:

12 FIBER CEMENT SHAKE SIDING PER DEVELOPER

13 FIBER CEMENT LAP SIDING PER DEVELOPER

14 FIBER CEMENT WAVY SIDING PER DEVELOPER

15 FIBER CEMENT PANEL SIDING 1/4"X3 BATT S AT 12" O.C.

16 1X FIBER CEMENT TRIM OR EQUAL, U.N.O. SIZE AS NOTED

17 FALSE WOOD SHUTTERS, TYPE AS SHOWN. SIZE AS NOTED.

ALL WINDOWS WHOSE OPENING IS LESS THAN 24" ABOVE THE FINISH FLOOR AND WHOSE OPENING IS GREATER THAN 72" ABOVE THE OUTSIDE WALKING SURFACE MUST HAVE WINDOW OPENING LIMITING DEVICES COMPLYING WITH LOCAL CODES

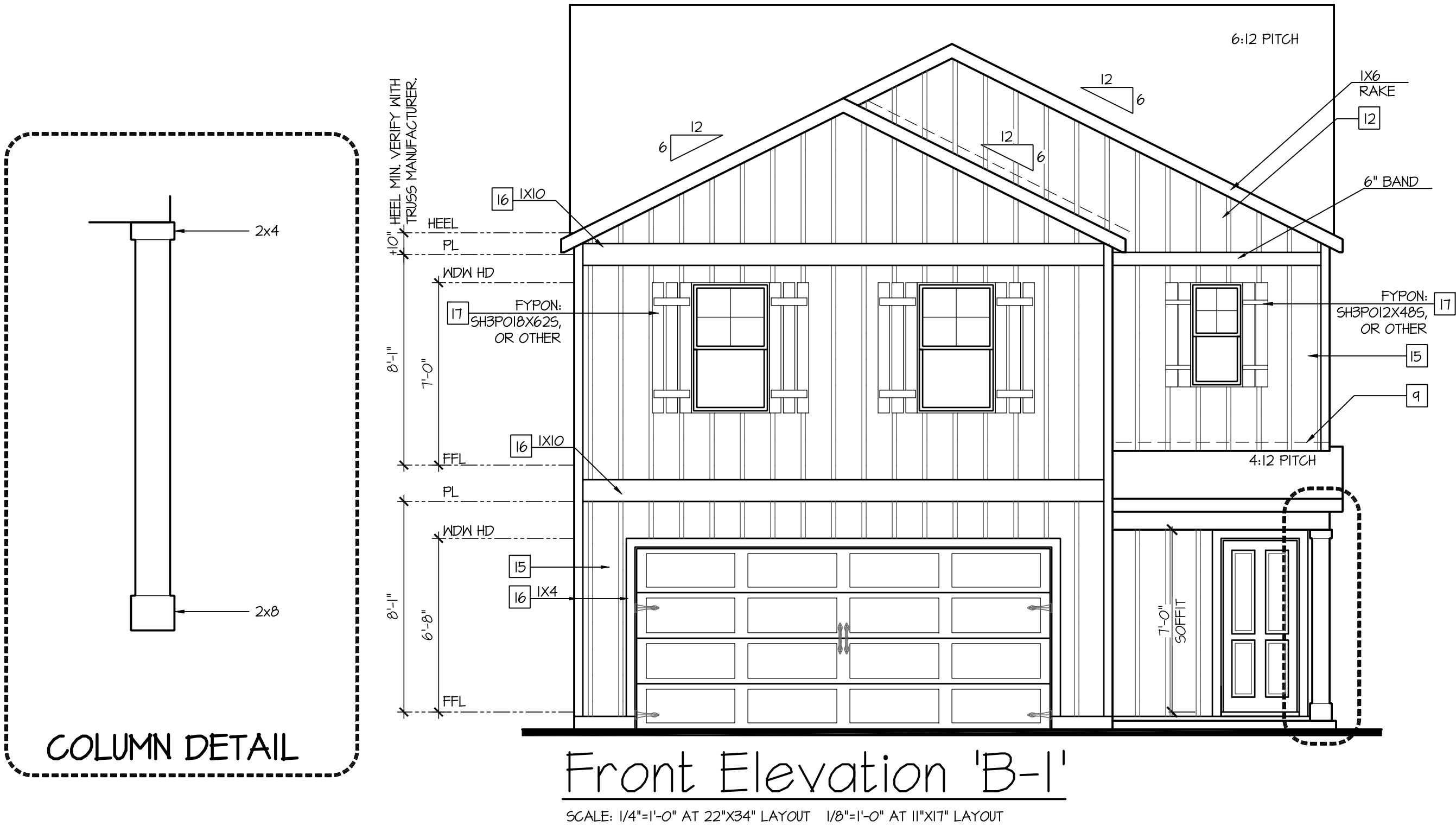
AVAILABLE WITH OPTIONAL
9'-1" FIRST FLOOR PLATE

NOTES AT OPT 9'-1" PLT:

- WDW HT SET AT 7'-6"

- INTERIOR SOFFITS AT 8'-0"

- EXTERIOR SOFFITS AT 8'-0"



NO.	DATE:	REVISION:
Δ1	05.04.24	

PROFESSIONAL SEAL:

PROJECT TITLE:

30' Series

CLIENTS NAME:



PROJECT NO: GMD14065

SHEET TITLE:
'TAYLOR'
EXTERIOR
ELEVATIONS
'3EFF-B'

PRINT DATE:

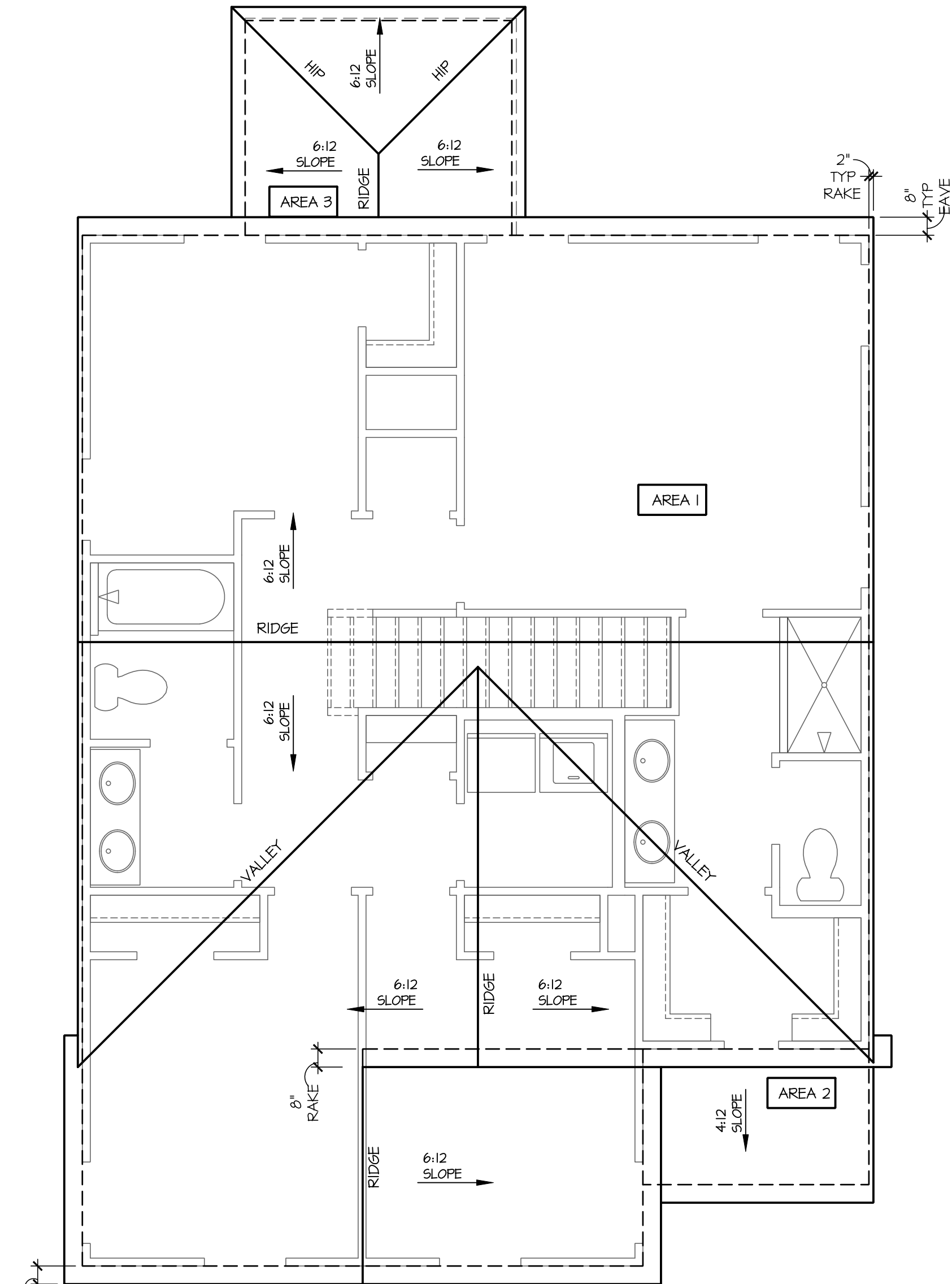
May 02, 2024

SHEET NO:

1 B

FOR
CONSTRUCTION

ATTIC VENT CALCULATION FOR MODEL 'TAYLOR': 1:150 RATIO.	
<p>THE NET FREE VENTILATING AREA SHALL NOT BE LESS THAN 1/150 OF THE AREA OF THE SPACE VENTILATED.</p> <p>GENERAL CONTRACTOR SHALL VERIFY THE NET FREE VENTILATION OF THE VENT PRODUCT SELECTED BY OWNER. VERIFY WITH MANUFACTURER OF HIGH AND LOW VENTS TO BE USED FOR MINIMUM CALCULATED VENTS REQUIRED. THE REQUIRED VENTILATION SHALL BE MAINTAINED. PROVIDE INSULATION STOP SUCH THAT INSULATION DOES NOT OBSTRUCT FREE AIR MOVEMENT AS REQUIRED BY THE BUILDING OFFICIAL.</p> <p>ALL OVERLAP FRAMED ROOF AREAS SHALL HAVE OPENINGS BETWEEN THE ADJACENT ATTICS IN THE ROOF SHEATHING (AS ALLOWED BY THE STRUCTURAL ENGINEER) TO ALLOW PASSAGE AND ATTIC VENTILATION BETWEEN THE TWO OR ISOLATED ATTIC SPACES SHALL BE VENTED INDEPENDENTLY TO CBC REQUIREMENTS.</p> <p>PER DEVELOPER, AT ALL CANTILEVERED FLOORS, CANTILEVERED ARCHITECTURAL POP-OUTS, AND ANY DOUBLE FRAMING PROJECTIONS THAT ARE SEPARATED FROM THE VENTING CALCULATIONS SHOWN ABOVE, PROVIDE A CONTINUOUS 2" CORROSION RESISTANT SOFFIT VENT AT UNDERSIDE OF FRAMED ELEMENT.</p>	<p>(PER IRC SECTION R806.2)</p> <p>1 SQUARE INCH VENT FOR EVERY 150 SQUARE INCHES OF CEILING</p> <p>*144 SQ. IN. = 1 SQ. FT.</p> <p>BLDG. CEILING (SF) X 144 = BLDG (SQ. IN.)</p> <p>BLDG. (SQ. IN.) / 150 = SQ. IN. OF VENT REQUIRED</p> <p>SQ. IN. OF VENT REQUIRED / 2 = 50% AT HIGH & 50% AT LOW.</p> <p>ROOF AREA 1:= 1035 SF 1035 SQ. FT. X 144 = 149040 SQ. IN. 149040 SQ. IN. / 150 = 993.60 SQ. IN. OF VENT REQ'D</p> <p>ROOF AREA 2:= 42 SF 42 SQ. FT. X 144 = 6048 SQ. IN. 6048 SQ. IN. / 150 = 40.32 SQ. IN. OF VENT REQ'D</p> <p>ROOF AREA 3:= 80 SF 80 SQ. FT. X 144 = 11520 SQ. IN. 11520 SQ. IN. / 150 = 76.80 SQ. IN. OF VENT REQ'D</p> <p>BUILDER TO PROVIDE ATTIC VENTING MINIMUM AREA PER LOCAL CODE WITH THE AMOUNT/NUMBER VENTS AND TYPE OF VENTING USED PER THE WRITTEN MANUFACTURER'S SPECIFICATIONS PRIOR TO THE FINISH OF ROOFING MATERIAL.</p>
<p>NOTES:</p> <div><div>- ALL ROOF DRAINAGE SHALL BE PIPED TO STREET OR APPROVED DRAINAGE FACILITY.</div><div>- DASHED LINES INDICATE WALL BELOW.</div><div>- LOCATE GUTTER AND DOWNSPOUTS PER BUILDER.</div><div>- PITCHED ROOFS AS NOTED.</div></div> <div><div>- TRUSS MANUFACTURER SHALL SUBMIT STRUCTURAL CALCS AND SHOP DRAWINGS TO THE BUILDER'S GENERAL CONTRACTOR AND BUILDING DEPARTMENT FOR REVIEW PRIOR TO FABRICATIONS.</div><div>- ALL PLUMBING VENTS SHALL BE COMBINED INTO A MINIMUM AMOUNT OF ROOF PENETRATIONS. ALL ROOF PENETRATIONS SHALL OCCUR TO THE REAR OF THE MAIN RIDGE.</div></div>	
ATTIC VENT CALCULATION FOR MODEL 'TAYLOR': 1:300 RATIO.	
<p>AS AN ALTERNATE TO THE 1/150 RATIO LISTED ABOVE, THE NET FREE CROSS-VENTILATION AREA MAY BE REDUCED TO 1/300 PER IRC SECTION R806.2</p> <p>GENERAL CONTRACTOR SHALL VERIFY THE NET FREE VENTILATION OF THE VENT PRODUCT SELECTED BY OWNER. VERIFY WITH MANUFACTURER OF HIGH AND LOW VENTS TO BE USED FOR MINIMUM CALCULATED VENTS REQUIRED. THE REQUIRED VENTILATION SHALL BE MAINTAINED. PROVIDE INSULATION STOP SUCH THAT INSULATION DOES NOT OBSTRUCT FREE AIR MOVEMENT AS REQUIRED BY THE BUILDING OFFICIAL.</p> <p>ALL OVERLAP FRAMED ROOF AREAS SHALL HAVE OPENINGS BETWEEN THE ADJACENT ATTICS IN THE ROOF SHEATHING (AS ALLOWED BY THE STRUCTURAL ENGINEER) TO ALLOW PASSAGE AND ATTIC VENTILATION BETWEEN THE TWO OR ISOLATED ATTIC SPACES SHALL BE VENTED INDEPENDENTLY TO CBC REQUIREMENTS.</p> <p>PER DEVELOPER, AT ALL CANTILEVERED FLOORS, CANTILEVERED ARCHITECTURAL POP-OUTS, AND ANY DOUBLE FRAMING PROJECTIONS THAT ARE SEPARATED FROM THE VENTING CALCULATIONS SHOWN ABOVE, PROVIDE A CONTINUOUS 2" CORROSION RESISTANT SOFFIT VENT AT UNDERSIDE OF FRAMED ELEMENT.</p>	<p>(PER IRC SECTION R806.2)</p> <p>1 SQUARE INCH VENT FOR EVERY 300 SQUARE INCHES OF CEILING</p> <p>*144 SQ. IN. = 1 SQ. FT.</p> <p>BLDG. CEILING (SF) X 144 = BLDG (SQ. IN.)</p> <p>BLDG. (SQ. IN.) / 300 = SQ. IN. OF VENT REQUIRED</p> <p>SQ. IN. OF VENT REQUIRED / 2 = 50% AT HIGH & 50% AT LOW.</p> <p>ROOF AREA 1:= 1035 SF 1035 SQ. FT. X 144 = 149040 SQ. IN. 149040 SQ. FT. / 300 = 496.80 SQ. IN. OF VENT REQ'D 496.80 SQ. IN. / 2 = 248.40 SQ. IN. 248.40 SQ. IN. OF VENT AT HIGH & 248.40 SQ. IN. OF VENT AT LOW REQUIRED.</p> <p>ROOF AREA 2:= 42 SF 42 SQ. FT. X 144 = 6048 SQ. IN. 6048 SQ. FT. / 300 = 20.16 SQ. IN. OF VENT REQ'D 20.16 SQ. IN. / 2 = 10.08 SQ. IN. 10.08 SQ. IN. OF VENT AT HIGH & 10.08 SQ. IN. OF VENT AT LOW REQUIRED.</p> <p>ROOF AREA 3:= 80 SF 80 SQ. FT. X 144 = 11520 SQ. IN. 11520 SQ. FT. / 300 = 38.40 SQ. IN. OF VENT REQ'D 38.40 SQ. IN. / 2 = 19.20 SQ. IN. 19.20 SQ. IN. OF VENT AT HIGH & 19.20 SQ. IN. OF VENT AT LOW REQUIRED.</p> <p>BUILDER TO PROVIDE ATTIC VENTING MINIMUM AREA PER LOCAL CODE WITH THE AMOUNT/NUMBER VENTS AND TYPE OF VENTING USED PER THE WRITTEN MANUFACTURER'S SPECIFICATIONS PRIOR TO THE FINISH OF ROOFING MATERIAL.</p>



Roof Plan 'B'

SCALE: 1/4"=1'-0" AT 22"X34" LAYOUT 1/8"=1'-0" AT 11"X17" LAYOUT

NO.	DATE:	REVISION:
△	05.04.24	

PROFESSIONAL SEAL:

PROJECT TITLE:

30' Series

CLIENTS NAME:



PROJECT NO: GMD14065

SHEET TITLE:

'TAYLOR'
ROOF PLAN
'3EFF-B'

PRINT DATE:

May 02, 2024

SHEET NO:

1.5 B

FOR
CONSTRUCTION

- GRADE CONDITIONS MAY VARY FOR INDIVIDUAL SITE FROM THAT SHOWN. BUILDER SHALL VERIFY AND COORDINATE PER ACTUAL SITE CONDITIONS.
- WINDOW HEAD HEIGHTS:
1ST FLOOR = 7'-0" U.N.O. ON ELEVATIONS.
2ND FLOOR = 7'-0" U.N.O. ON ELEVATIONS.
- FLOORING: PITCHED SHINGLES PER DEVELOPER.
- WINDOWS: MANUFACTURER PER DEVELOPER. DIVIDED LITES AS SHOWN ON THE EXTERIOR ELEVATIONS
- ENTRY DOOR: AS SELECTED BY DEVELOPER.
- GARAGE DOORS: AS SELECTED BY DEVELOPER, RAISED PANEL AS SHOWN.
- CHIMNEY AS OCCURS: TOP OF CHIMNEYS TO BE A MINIMUM OF 24" ABOVE ANY ROOF WITHIN 10'-0" OF CHIMNEY.
- ALL EXTERIOR MATERIALS TO BE INSTALLED PER MANUFACTURER'S WRITTEN INSTRUCTIONS.
- PROTECTION AGAINST DECAY:
(ALL PORTIONS OF A PORCH, SCREEN PORCH OR DECK FROM THE BOTTOM OF THE HEADER DOWN, INCLUDING POST, RAILS, PICKETS, STEPS AND FLOOR STRUCTURE.)

MASONRY:

- [1] ADHERED STONE VENEER AS SELECTED BY DEVELOPER. HEIGHT AS NOTED.
- [2] MASONRY FULL BRICK AS SELECTED BY DEVELOPER. HEIGHT AS NOTED.
- [3] MASONRY FULL STONE AS SELECTED BY DEVELOPER. HEIGHT AS NOTED.
- [4] 8" SOLDIER COURSE.
- [5] ROMLOCK COURSE
- [6] DECORATIVE KEY. SEE DETAIL.

TYPICALS:

- [7] CORROSION RESISTANT SCREEN LOUVERED VENTS; SIZE AS NOTED.
- [8] CODE APPROVED TERMINATION CHIMNEY CAP.
- [9] CORROSION RESISTANT ROOF TO WALL FLASHING. CODE COMPLIANT FLASHING MUST BE INSTALLED AT ALL ROOF/WALL INTERSECTIONS.
- [10] STANDING SEAM METAL ROOF. INSTALL PER MANUFACTURER'S WRITTEN INSTRUCTIONS.
- [11] DECORATIVE WROUGHT IRON. SEE DETAILS.

SIDING:

- [12] FIBER CEMENT SHAKE SIDING PER DEVELOPER
1/4" 5/4x4 CORNER TRIM BOARDS.
- [13] FIBER CEMENT LAP SIDING PER DEVELOPER
1/4" 5/4x4 CORNER TRIM BOARDS.
- [14] FIBER CEMENT HAVY SIDING PER DEVELOPER
1/4" 5/4x4 CORNER TRIM BOARDS.
- [15] FIBER CEMENT PANEL SIDING 1/4" 1X3 BATTS @ 12" O.C.
(VINYL BOARD AND BATT SIDING)
- [16] 1X FIBER CEMENT TRIM OR EQUAL, UN.O. SIZE AS NOTED
- [17] FALSE WOOD SHUTTERS, TYPE AS SHOWN. SIZE AS NOTED.


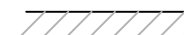

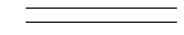
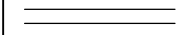

SCALE: 1/4"=1'-0" AT 22"X34" LAYOUT 1/8"=1'-0" AT 11"X17" LAYOUT

2 B

- FOR ADDITIONAL NOTES SEE GENERAL NOTES ON TITLE SHEET AND DETAILS.
- WINDOW HEAD HEIGHTS:
1ST FLOOR = 7'-0" U.N.O. ON ELEVATIONS.
2ND FLOOR = 7'-0" U.N.O. ON ELEVATIONS.

ALL DIMENSIONS TO WINDOWS AND DOORS ARE TO CENTERLINE.

WALL LEGEND:

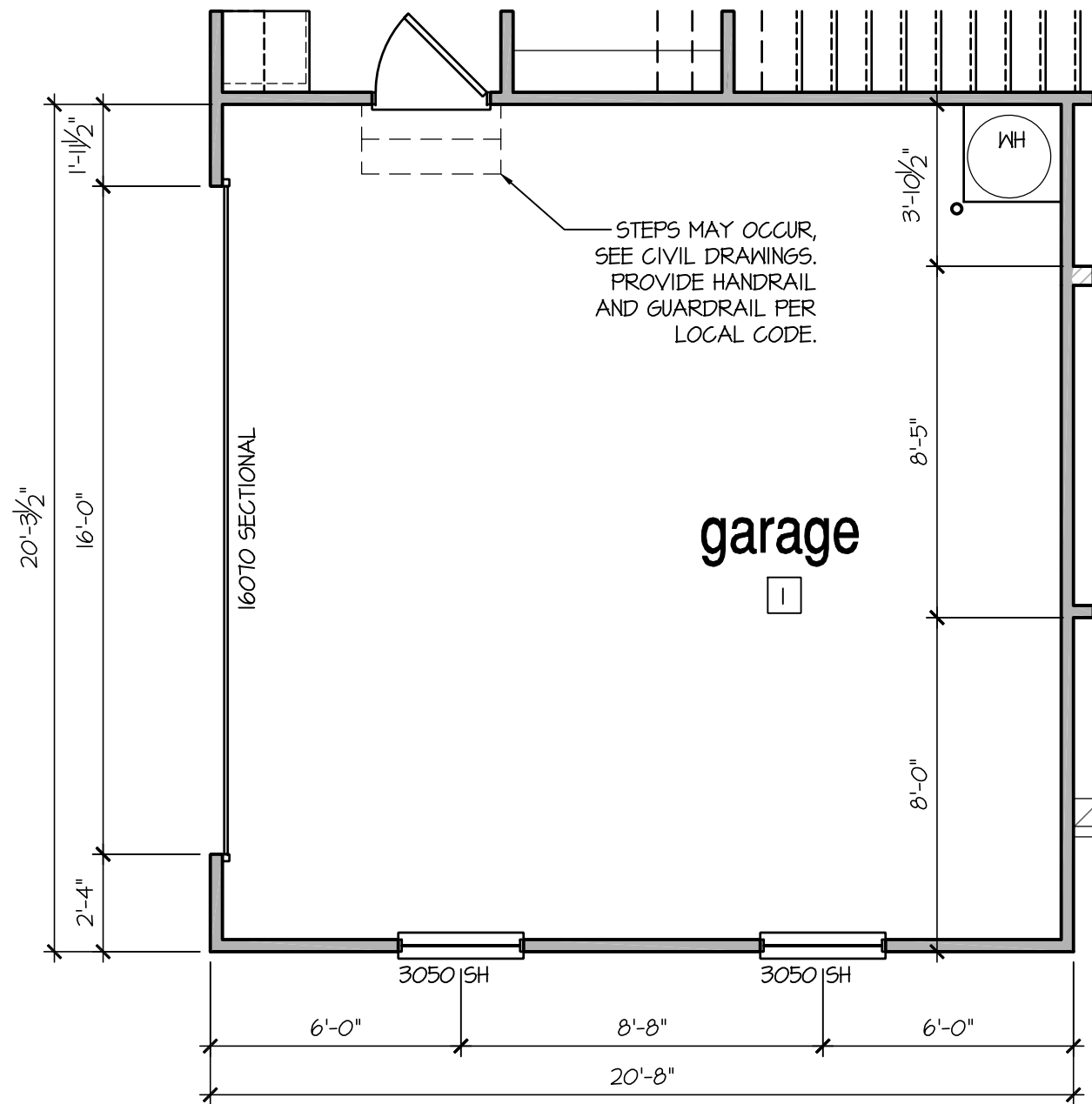
	
FULL HEIGHT 2X4 WOOD STUD PARTITION	FULL HEIGHT 2X6 WOOD STUD PARTITION
	
BRICK / STONE VENEER	STUD WALL BELOW HEIGHT AND STUD SIZE AS NOTED
	
LOW GYPSUM BOARD WALL HEIGHT AND STUD SIZE AS NOTED	DRYWALL OPENING, HEIGHT AS NOTED ON PLAN.

KEY NOTES:

- FIRE PROTECTION:
- [1] HOUSE TO GARAGE FIRE SEPARATION. GARAGE/HOUSE SEPARATION AT VERTICAL SURFACES SHALL BE PROTECTED WITH ONE (1) LAYER 1/2" GYPSUM BOARD. (PER LOCAL CODES)
- GARAGE/HOUSE SEPARATION AT HORIZONTAL SURFACES SHALL BE PROTECTED WITH ONE (1) LAYER 5/8" TYPE 'X' GYPSUM BOARD. (PER LOCAL CODES)
- [2] HOUSE TO GARAGE DOOR SEPARATION. PROVIDE 1-3/8" SOLID CORE DOOR OR APPROVED 20 MINUTE RATED DOOR. (PER LOCAL CODES)
- [3] BENEATH STAIRS AND LANDINGS, 1/2" GYPSUM BOARD ON WALLS AND CEILING OF ENCLOSED ACCESSIBLE AREAS. (PER LOCAL CODES)
- MEP'S
- [4] GAS WATER HEATER ON 18" HIGH PLATFORM. (PER LOCAL CODES)
- [5] FAU 8'X8' PLATFORM. VERIFY WITH TRUSS MANUFACTURER. (6'-6" MIN. CLEAR HEIGHT TO HORIZONTAL MEMBERS, 2'X6" OVER 2'X4" BOTTOM CHORD. OF TRUSS, VERIFY W/ TRUSSES.)
- [6] A/C CONDENSER PAD. (VERIFY)
- [7] PRE-FABRICATED METAL FIREPLACE. INSTALL PER MANUFACTURER'S WRITTEN INSTRUCTIONS.
- [8] ATTIC ACCESS LARGE ENOUGH TO REMOVE LARGEST PIECE OF EQUIPMENT BUT NOT LESS THAN 30"x22". FIRE RATED ACCESS AS NOTED. (PER LOCAL CODES)
- ATTIC ACCESS LADDER, VERIFY LOCATION AND SIZE WITH TRUSSES. (25 1/2" X 54" SIZE.)
- TYPICALS:
- [9] TEMPERED SAFETY GLASS. (PER LOCAL CODES)
- [10] PLYWOOD SHELF ABOVE WITH DRYWALL FINISH OVER. HEIGHT AS NOTED.
- [11] HALF WALL, HEIGHT AS NOTED.
- [12] INTERIOR SOFFITS: FFL = 7'-6" U.N.O. SFL = 7'-6" U.N.O.
- BATHS:
- [13] SHOWER. TEMPERED GLASS ENCLOSURE.
- [14] TUB-SHOWER COMBO. TEMPERED GLASS ENCLOSURE.
- [15] CERAMIC TILE SHOWER AND FLOOR. TEMPERED GLASS ENCLOSURE.
- [16] ACRYLIC TUB W/ CERAMIC PLATFORM
- KITCHEN:
- [17] 30" SLIDE-IN ELECTRICAL RANGE W/ HOOD AND MICRO ABV. VENT PER MANUFACTURER'S WRITTEN INSTRUCTIONS.
- [18] 30" GAS COOKTOP AND HOOD. VENT PER MANUFACTURER'S WRITTEN INSTRUCTIONS.
- [19] ELECTRIC OVEN WITH MICROWAVE OVEN.

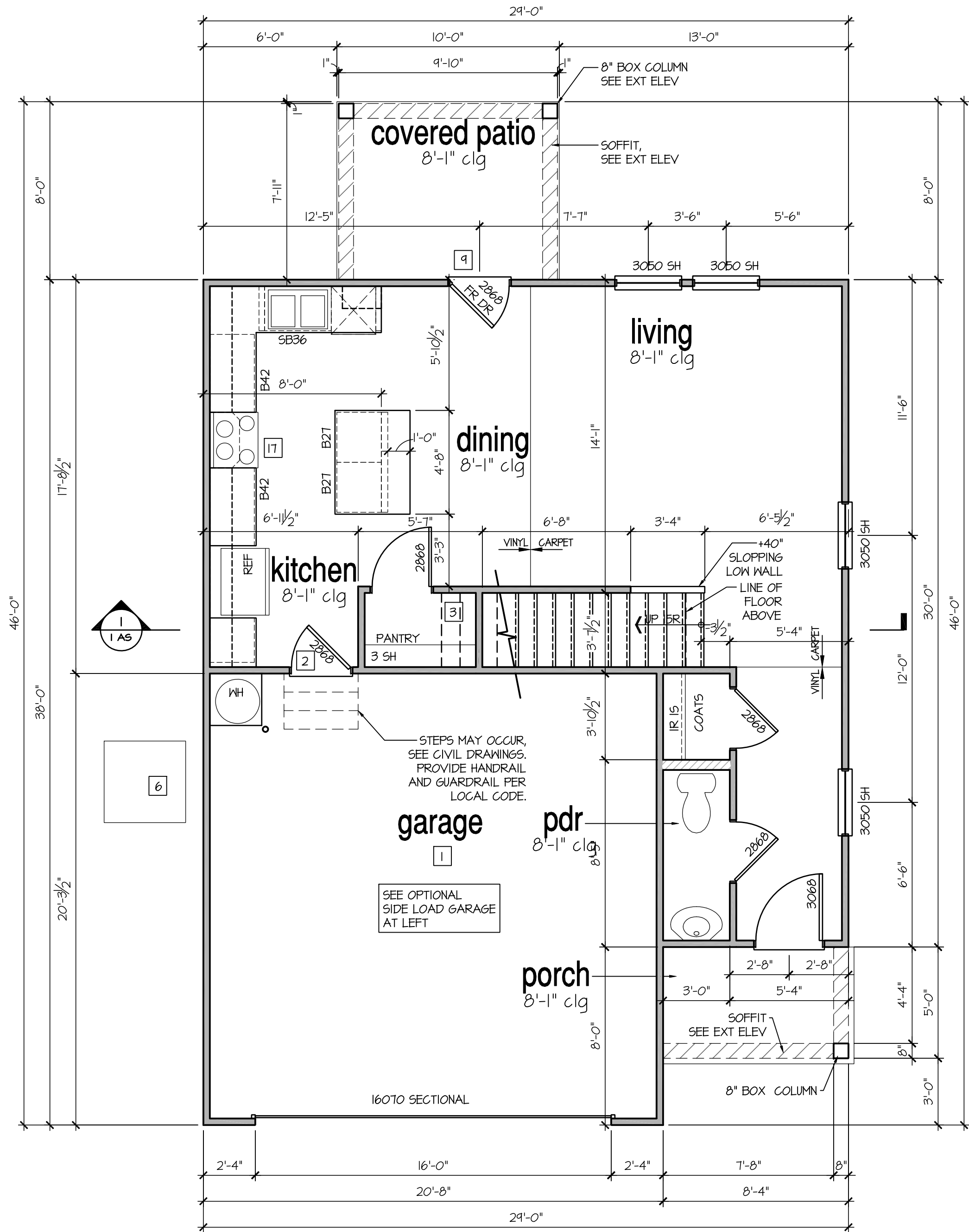
8'-1" STAIR NOTE:
(USE 16" T.J.I. WITH 3/4" PLYWOOD SUBFLOOR)
15 TREADS AT 10" EACH VERIFY
16 RISERS AT +/- 7.11" = 113 3/4" TOTAL
RISE VERIFY

9'-1" STAIR NOTE:
(USE 14" T.J.I. WITH 3/4" PLYWOOD SUBFLOOR)
16 TREADS AT 10" EACH VERIFY
17 RISERS AT +/- 7.28" = 123 3/4" TOTAL
RISE VERIFY



Opt Side Load Garage 'B'

SCALE: 1/4"=1'-0" AT 22"X34" LAYOUT 1/8"=1'-0" AT 11"X11" LAYOUT



1st Floor Plan 'B'

SCALE: 1/4"=1'-0" AT 22"X34" LAYOUT 1/8"=1'-0" AT 11"X11" LAYOUT

AVAILABLE WITH OPTIONAL
9'-1" FIRST FLOOR PLATE

NOTES AT OPT 9'-1" PLT:

- WDW HT SET AT 7'-6"
- INTERIOR SOFFITS AT 8'-0"
- EXTERIOR SOFFITS AT 8'-0"

NO.	DATE:	REVISION:
1	05.04.24	

PROFESSIONAL SEAL:

PROJECT TITLE:

30' Series

CLIENTS NAME:



PROJECT NO: GMD14065

SHEET TITLE:
'TAYLOR'
1st FLOOR
PLAN '3EFF-B'

PRINT DATE:

May 02, 2024

SHEET NO:

4 B


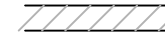

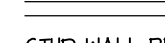
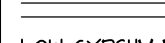

FOR
CONSTRUCTION

9'-1" STAIR NOTE:
(USE 14" T.J.I WITH 3/4" PLYWOOD SUBFLOOR)
16 TREADS AT 10" EACH VERIFY
17 RISERS AT +/- 7.28" = 123 3/4" TOTAL
RISE VERIFY

- FOR ADDITIONAL NOTES SEE GENERAL NOTES ON TITLE SHEET AND DETAILS.
- WINDOW HEAD HEIGHTS:
1ST FLOOR = 7'-0" U.N.O. ON ELEVATIONS.
2ND FLOOR = 7'-0" U.N.O. ON ELEVATIONS.

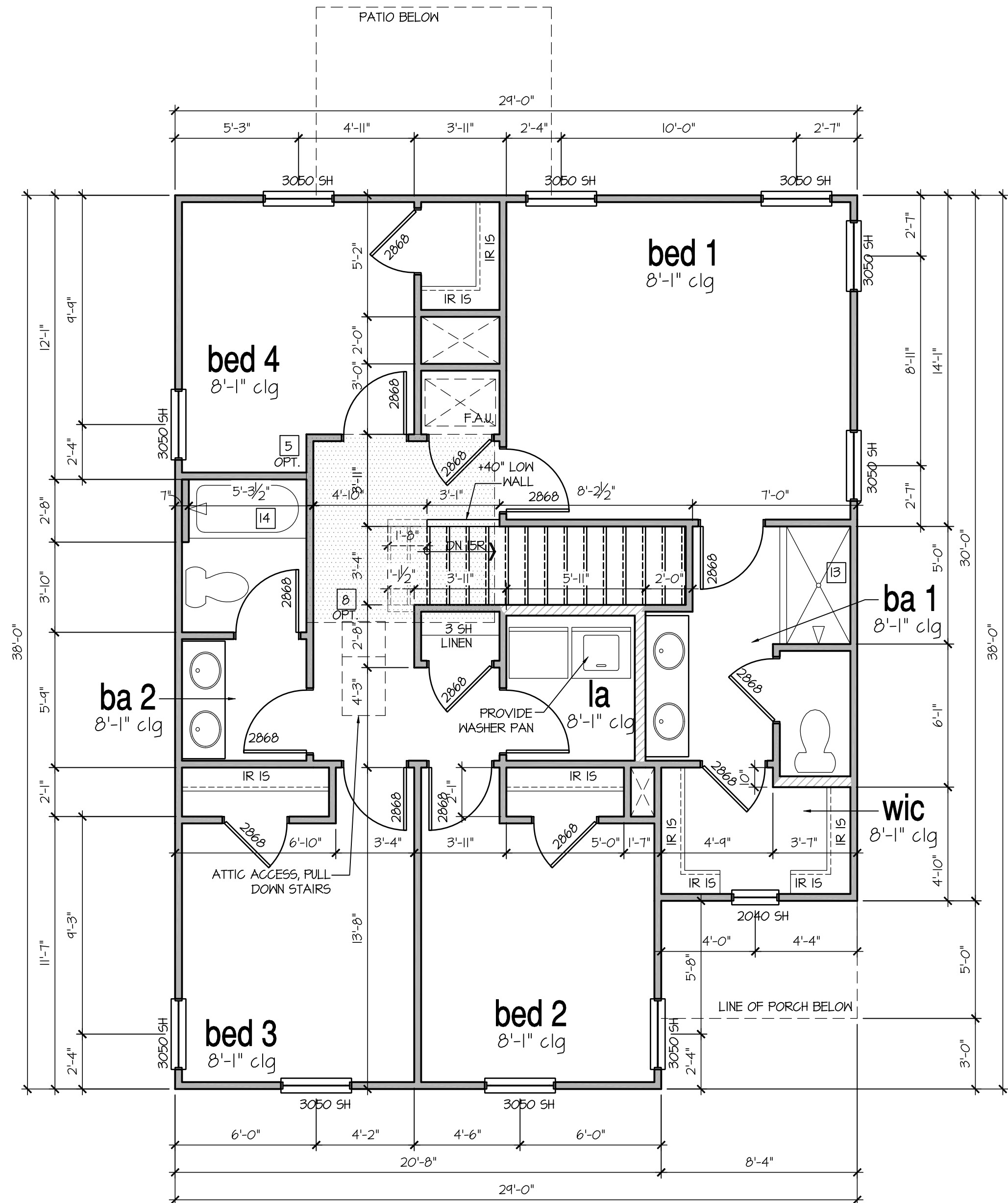
ALL DIMENSIONS TO WINDOWS AND DOORS ARE TO CENTERLINE.

WALL LEGEND:

	
FULL HEIGHT 2X4 WOOD STUD PARTITION	FULL HEIGHT 2X6 WOOD STUD PARTITION
	
BRICK / STONE VENEER	STUD WALL BELOW HEIGHT AND STUD SIZE AS NOTED
	
LOW GYPSUM BOARD WALL HEIGHT AND STUD SIZE AS NOTED	DRYWALL OPENING HEIGHT AS NOTED ON PLAN.

KEY NOTES:

- FIRE PROTECTION:
- HOUSE TO GARAGE FIRE SEPARATION. GARAGE/HOUSE SEPARATION AT VERTICAL SURFACES SHALL BE PROTECTED WITH ONE (1) LAYER 1/2" GYPSUM BOARD. (PER LOCAL CODES)
GARAGE/HOUSE SEPARATION AT HORIZONTAL SURFACES SHALL BE PROTECTED WITH ONE (1) LAYER 5/8" TYPE 'X' GYPSUM BOARD. (PER LOCAL CODES)
 - HOUSE TO GARAGE DOOR SEPARATION. PROVIDE 1-3/8" SOLID CORE DOOR OR APPROVED 20 MINUTE RATED DOOR. (PER LOCAL CODES)
 - BENEATH STAIRS AND LANDINGS, 1/2" GYPSUM BOARD ON WALLS AND CEILING OF ENCLOSED ACCESSIBLE AREAS. (PER LOCAL CODES)
- MEP'S
- GAS WATER HEATER ON 18" HIGH PLATFORM. (PER LOCAL CODES)
 - FAU 8'X8' PLATFORM. VERIFY WITH TRUSS MANUFACTURER. (6'-6" MIN. CLEAR HEIGHT TO HORIZONTAL MEMBERS, 2"X6" OVER 2"X4" BOTTOM CHORD. OF TRUSS, VERIFY W/ TRUSSES.)
 - AVC CONDENSER PAD. (VERIFY)
 - PRE-FABRICATED METAL FIREPLACE. INSTALL PER MANUFACTURER'S WRITTEN INSTRUCTIONS.
 - ATTIC ACCESS LARGE ENOUGH TO REMOVE LARGEST PIECE OF EQUIPMENT BUT NOT LESS THAN 30"x22". FIRE RATED ACCESS AS NOTED. (PER LOCAL CODES)
ATTIC ACCESS LADDER, VERIFY LOCATION AND SIZE WITH TRUSSES. (25 1/2" X 54" SIZE.)
TYPICALS:
 - TEMPERED SAFETY GLASS. (PER LOCAL CODES)
 - PLYWOOD SHELF ABOVE WITH DRYWALL FINISH OVER. HEIGHT AS NOTED.
 - HALF WALL, HEIGHT AS NOTED.
 - INTERIOR SOFFITS: FFL = 7'-6" U.N.O. SFL = 7'-6" U.N.O.
- BATHS:
- SHOWER. TEMPERED GLASS ENCLOSURE.
 - TUB-SHOWER COMBO. TEMPERED GLASS ENCLOSURE.
 - CERAMIC TILE SHOWER AND FLOOR. TEMPERED GLASS ENCLOSURE.
- KITCHEN:
- 30" SLIDE-IN ELECTRICAL RANGE W/ HOOD AND MICRO ABV. VENT PER MANUFACTURER'S WRITTEN INSTRUCTIONS.
 - 30" GAS COOKTOP AND HOOD. VENT PER MANUFACTURER'S WRITTEN INSTRUCTIONS.
 - ELECTRIC OVEN WITH MICROWAVE OVEN.



2nd Floor Plan 'B'

SCALE: 1/4"=1'-0" AT 22"X34" LAYOUT 1/8"=1'-0" AT 11"X17" LAYOUT

NO.	DATE:	REVISION:
1	05.04.24	

PROFESSIONAL SEAL:

PROJECT TITLE:

30' Series

CLIENTS NAME:



PROJECT NO: GMD14065

SHEET TITLE:
'TAYLOR'
2nd FLOOR
PLAN '3EFF-B'

PRINT DATE:

May 02, 2024

SHEET NO:

5 B

FOR
CONSTRUCTION