

Legal Description

Wynlake Drive

Being a roadway located in the Southeast 1/4 of Section 22, Township 21 South, Range 3 West, Shelby County Alabama, and being shown on Wynlake Sector 5 Amended Plat (BASIS OF BEARINGS) as recorded in Map Book 40, Page 125 in the Probate Office of said Shelby County and being more particularly described as follows:

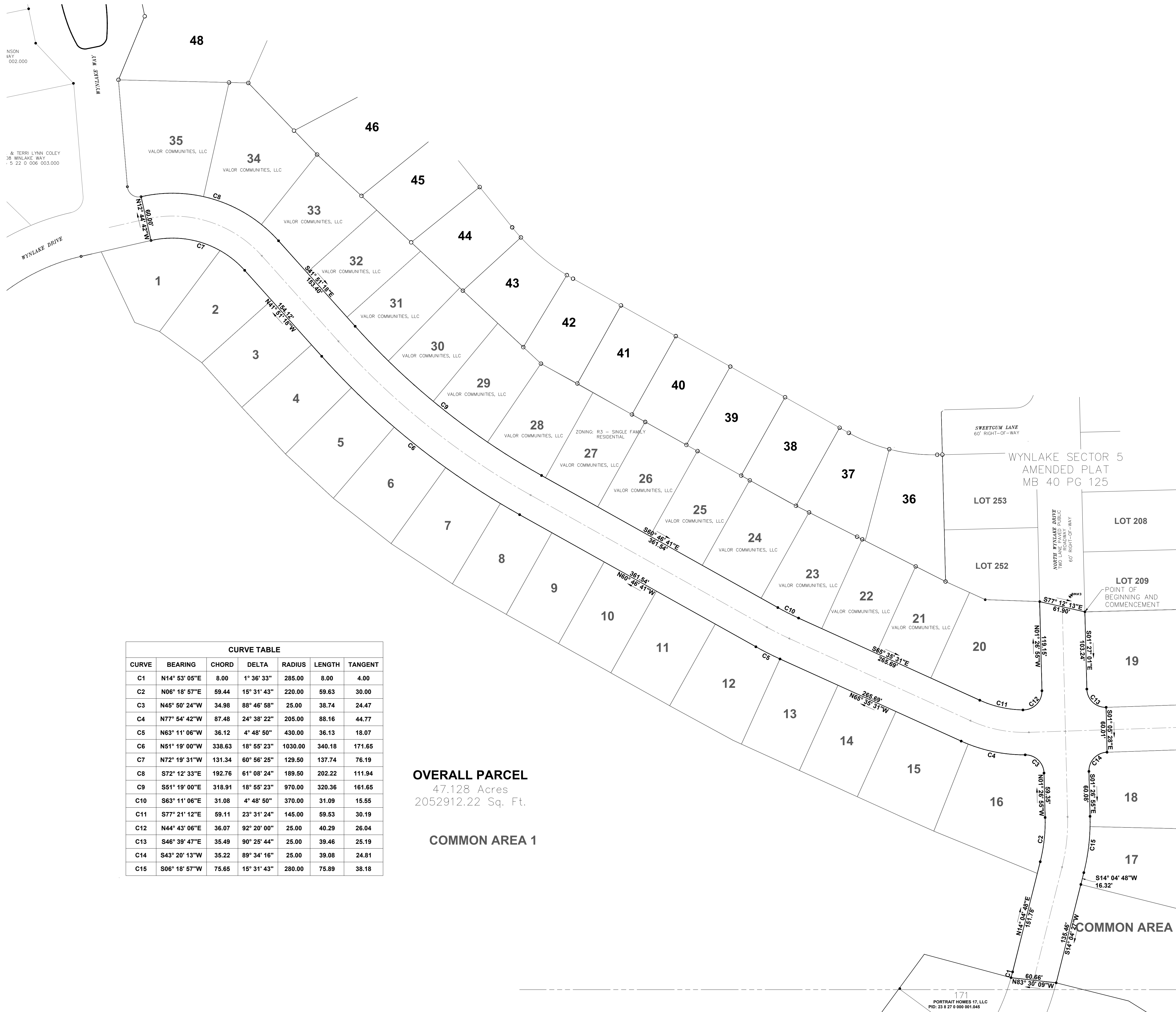
COMMENCE at the Southeast corner of Lot 209 as recorded in said Wynlake Sector 5 Amended Plat, also being the **POINT OF BEGINNING**, thence S01°27'01"E for a distance of 103.24 feet; thence a curve concaving northeasterly having a long chord S46°39'47"E a distance of 35.49 feet, with a central angle of 90°25'44", a radius of 25.00 feet, and arc length of 39.46 feet; thence S01°05'28"E for a distance of 60.01 feet; thence a curve concaving southeasterly having a long chord S43°20'13"W a distance of 35.22 feet, with a central angle of 89°34'16", a radius of 25.00 feet, and arc length of 39.08 feet; thence S01°26'55"E for a distance of 60.08 feet; thence a curve concaving westerly having a long chord S06°18'57"W a distance of 75.65 feet, with a central angle of 15°31'43", a radius of 280.00 feet, and arc length of 75.89 feet; thence S14°04'48"W for a distance of 16.32 feet; thence S14°04'27"W for a distance of 135.46 feet; thence N83°30'09"W for a distance of 60.66 feet; thence a curve concaving westerly having a long chord N14°53'05"E a distance of 8.00 feet, with a central angle of 01°36'33", a radius of 285.00 feet, and arc length of 8.00 feet; thence N14°04'48"E for a distance of 151.78 feet; thence a curve concaving westerly having a long chord N06°18'57"E a distance of 59.44 feet, with a central angle of 15°31'43", a radius of 220.00 feet, and arc length of 59.63 feet; thence N01°26'55"W for a distance of 59.35 feet; thence a curve concaving southwesterly having a long chord N45°50'24"W a distance of 34.98 feet, with a central angle of 88°46'58", a radius of 25.00 feet, and arc length of 38.74 feet; thence a curve concaving northeasterly having a long chord N77°54'42"W a distance of 87.48 feet, with a central angle of 24°38'22", a radius of 205.00 feet, and arc length of 88.16 feet; thence N65°35'31"W for a distance of 265.69 feet; thence a curve concaving northeasterly having a long chord N63°11'06"W a distance of 36.12 feet, with a central angle of 04°48'50", a radius of 430.00 feet, and arc length of 36.13 feet; thence N60°46'41"W for a distance of 361.54 feet; thence a curve concaving northeasterly having a long chord N51°19'00"W a distance of 338.63 feet, with a central angle of 18°55'23", a radius of 1030.00 feet, and arc length of 340.18 feet; thence N41°51'18"W for a distance of 154.12 feet; thence a curve concaving southwesterly having a long chord N72°19'31"W a distance of 131.34 feet, with a central angle of 60°56'25", a radius of 129.50 feet, and arc length of 137.74 feet; thence N12°44'42"W for a distance of 60.00 feet; thence a curve concaving southwesterly having a long chord S72°12'33"E a distance of 192.76 feet, with a central angle of 61°08'24", a radius of 189.50 feet, and arc length of 202.22 feet; thence S41°51'18"E for a distance of

153.40 feet; thence a curve concaving northeasterly having a long chord S51°19'00"E a distance of 318.91 feet, with a central angle of 18°55'23", a radius of 970.00 feet, and arc length of 320.36 feet; thence S60°46'41"E for a distance of 361.54 feet; thence a curve concaving northeasterly having a long chord S63°11'06"E a distance of 31.08 feet, with a central angle of 04°48'50", a radius of 370.00 feet, and arc length of 31.09 feet; thence S65°35'31"E for a distance of 265.69 feet; thence a curve concaving northeasterly having a long chord S77°21'12"E a distance of 59.11 feet, with a central angle of 23°31'24", a radius of 145.00 feet, and arc length of 59.53 feet; thence a curve concaving northwesterly having a long chord N44°43'06"E a distance of 36.07 feet, with a central angle of 92°20'00", a radius of 25.00 feet, and arc length of 40.29 feet; thence N01°26'55"W for a distance of 119.15 feet; thence S77°12'13"E for a distance of 61.90 feet to the **POINT OF BEGINNING.**

SOURCE BENCHMARK

PROJECT DATUM BASED ON: OPUS (NAVD '88)

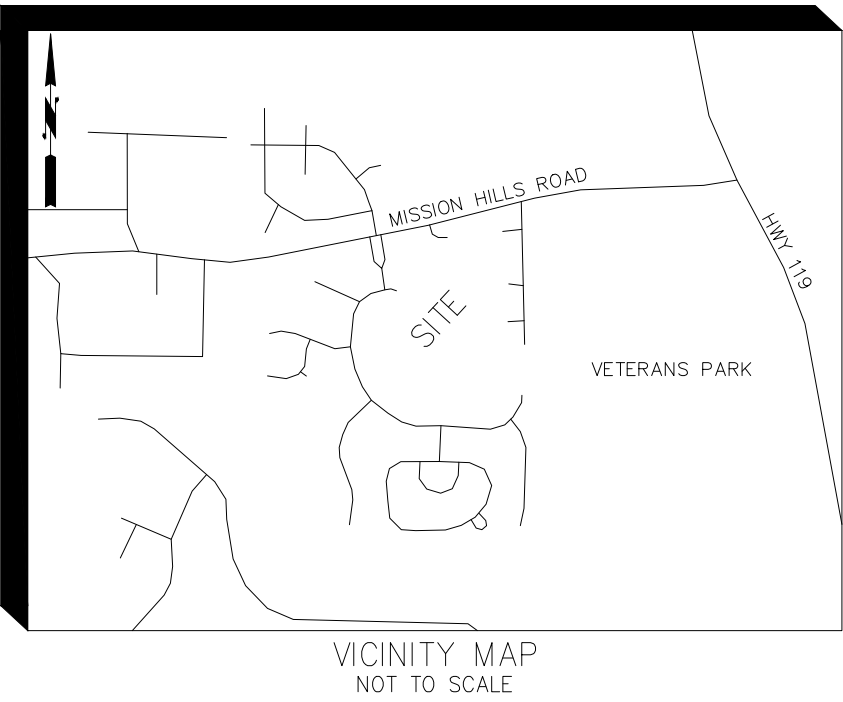
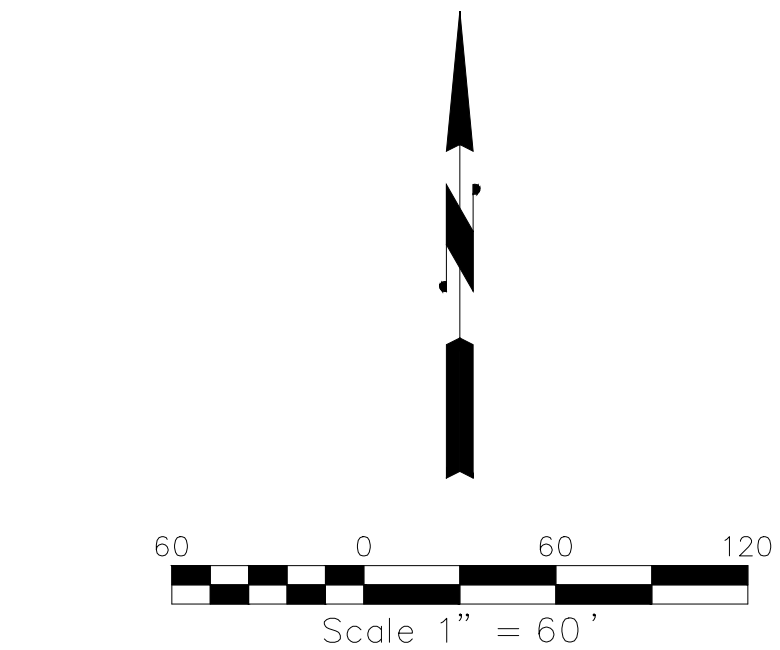
TBM NO.	ELEVATION	DESCRIPTION
BM #1	537.21'	MAG NAIL SET IN VALLEY GUTTER
BM #2	530.83'	MAG NAIL SET IN VALLEY GUTTER
BM #3	526.92'	MAG NAIL SET IN VALLEY GUTTER



CURVE TABLE						
CURVE	BEARING	CHORD	DELTA	RADIUS	LENGTH	TANGENT
C1	N14° 53' 05"E	8.00	1° 36' 33"	285.00	8.00	4.00
C2	N06° 18' 57"E	59.44	15° 31' 43"	220.00	59.63	30.00
C3	N45° 50' 24"W	34.98	88° 46' 58"	25.00	38.74	24.47
C4	N77° 54' 42"W	87.48	24° 38' 22"	205.00	88.16	44.77
C5	N63° 11' 06"W	36.12	4° 48' 50"	430.00	36.13	18.07
C6	N51° 19' 00"W	338.63	18° 55' 23"	1030.00	340.18	171.65
C7	N72° 19' 31"W	131.34	60° 56' 25"	129.50	137.74	76.19
C8	S72° 12' 33"E	192.76	61° 08' 24"	189.50	202.22	111.94
C9	S51° 19' 00"E	318.91	18° 55' 23"	970.00	320.36	161.65
C10	S63° 11' 06"E	31.08	4° 48' 50"	370.00	31.09	15.55
C11	S77° 21' 12"E	59.11	23° 31' 24"	145.00	59.53	30.19
C12	N44° 43' 06"E	36.07	92° 20' 00"	25.00	40.29	26.04
C13	S46° 39' 47"E	35.49	90° 25' 44"	25.00	39.46	25.19
C14	S43° 20' 13"W	35.22	89° 34' 16"	25.00	39.08	24.81
C15	S06° 18' 57"W	75.65	15° 31' 43"	280.00	75.89	38.18

OVERALL PARCEL
47.128 Acres
2052912.22 Sq. Ft.

COMMON AREA 1



ESP Associates AL, Inc.
291A Cahaba Valley Parkway North
Pelham, AL 35124
205-664-8498 (AL)
3475 Lakemont Blvd.
Fort Mill, SC 29708
704-583-4949 (NC)
803-802-2440 (SC)
www.espassociates.com



CIVIL SITE PLANS FOR
WYNLAKE SECTOR 6
PHASE I
CITY OF ALABASTER
SHELBY COUNTY, AL

DATE 08/31/2023		SCALE 1" = 100'	
DRAWN <i>JBC</i>		CHECKED <i>JBC</i>	
REVISIONS			
No.	DATE	BY	REVIEW
-DESCRIPTION- LEGAL DESCRIPTION			
ESP PROJ. NO. JQ35.400			
SHEET			
EX. 01			