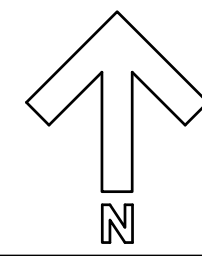
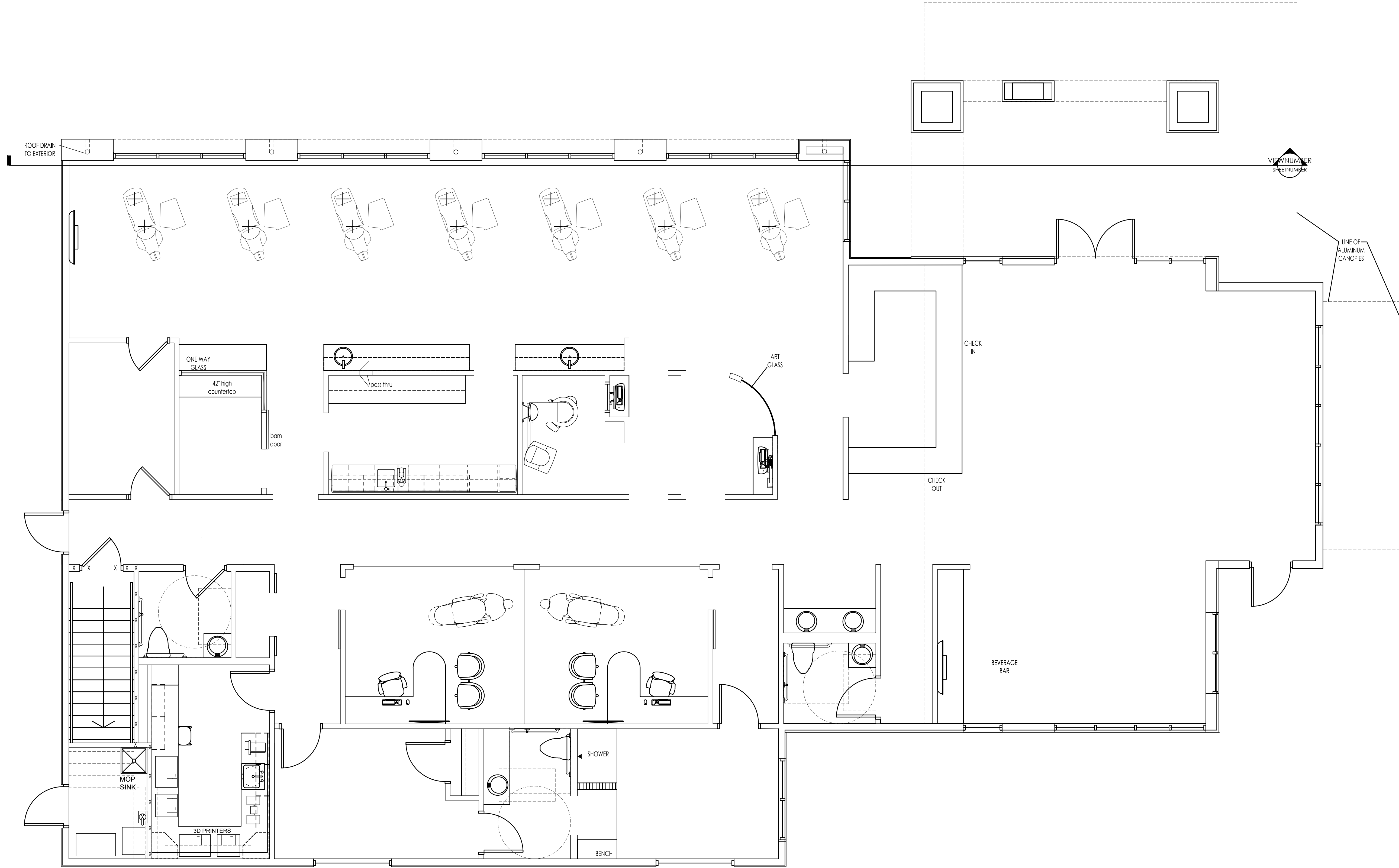




RYAN FREEMAN INC
GENERAL CONTRACTORS

ARCHITECT
LAWRENCE LEE VOWELS ARCHITECTS



First Floor Plan

1/4" = 1'-0"

Canales Orthodontics - Alabaster | job no: 32-57 | date: 9-16-2024 | drawn by: lv | checked by: lv | revision: (00) 00-0-2024

Birmingham office | 1000 edley parkway | liberty, alabama 35091 | 2059589888 | lcanal@me.com | www.lvva.com | ©COPRIG/LLV | Square Architects - Do not reproduce without written permission!

sheet no:

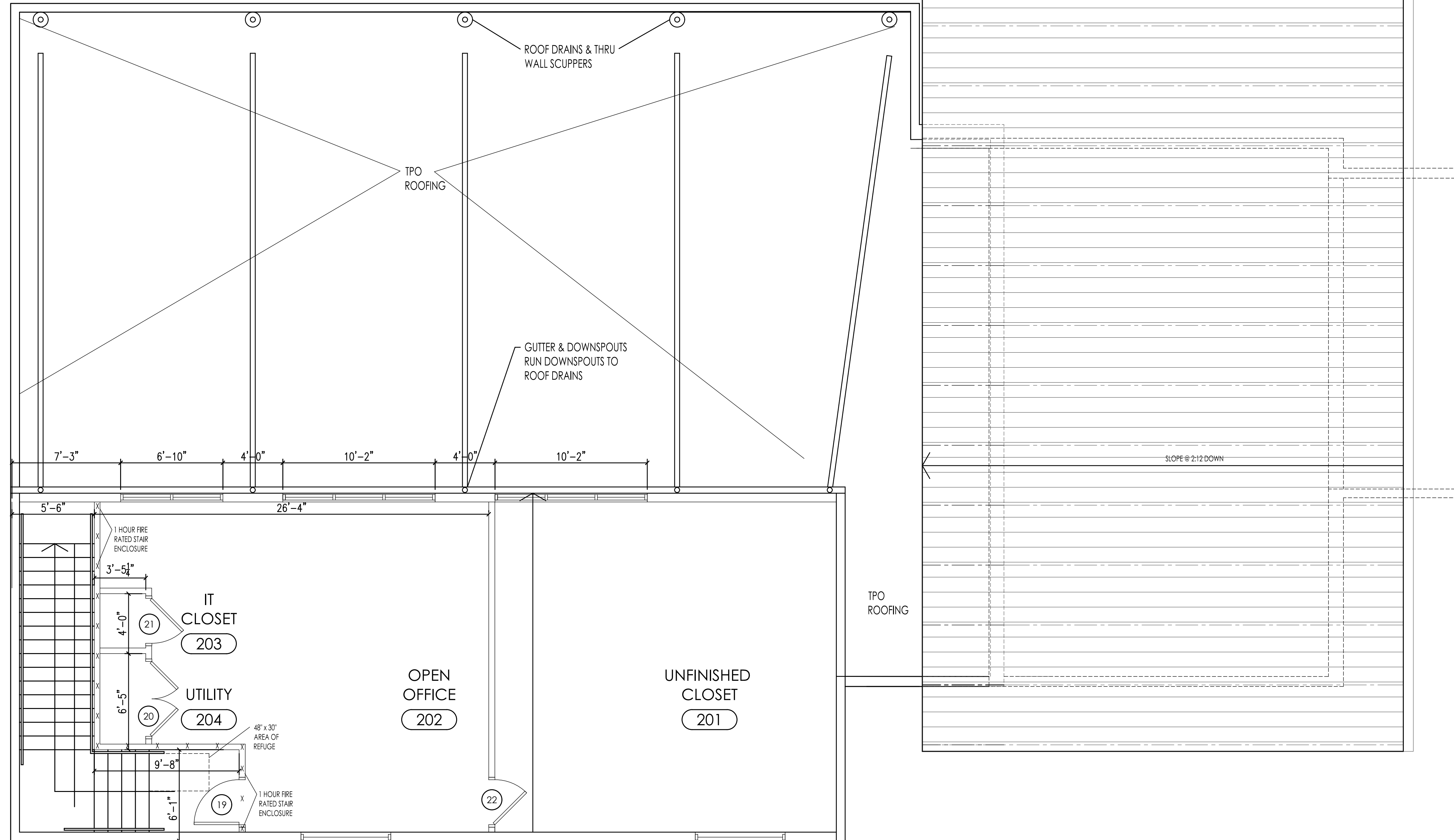
A-1.1

sheet description: First Floor Plan



RYAN FREEMAN INC
GENERAL CONTRACTORS

ARCHITECT
LAWRENCE LEE VOWELS ARCHITECTS



Second Floor Plan
1/4" = 1'-0"

Canales Orthodontics - Alabaster | job no: 32-571 | date: 9-16-2024 | drawn by: lv | checked by: lv | revision: (00) 00-0-2024

l: Birmingham office | 1000 | debby | parkway | liberty | alabama | 35091 | 2059598989 | l: can@ryanfreeman.com | www.ryanfreeman.com | ©COP/PG/INT | Square Architects - Do not reproduce without written permission!

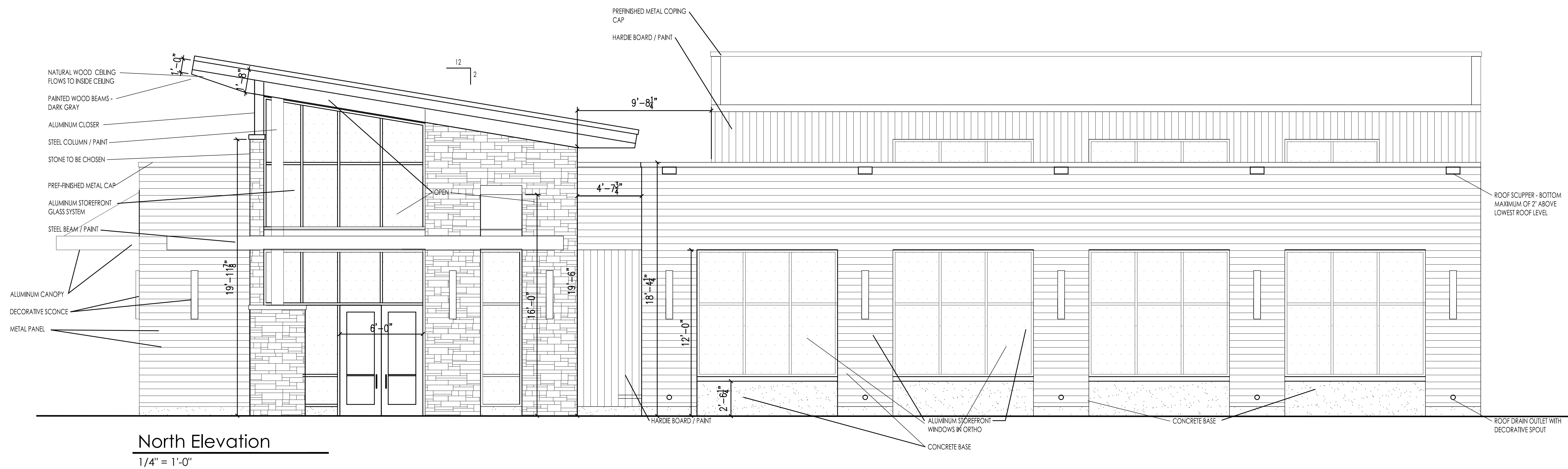
sheet no:

A-1.2

sheet description: Second Floor Plan



East Elevation
1/4" = 1'-0"

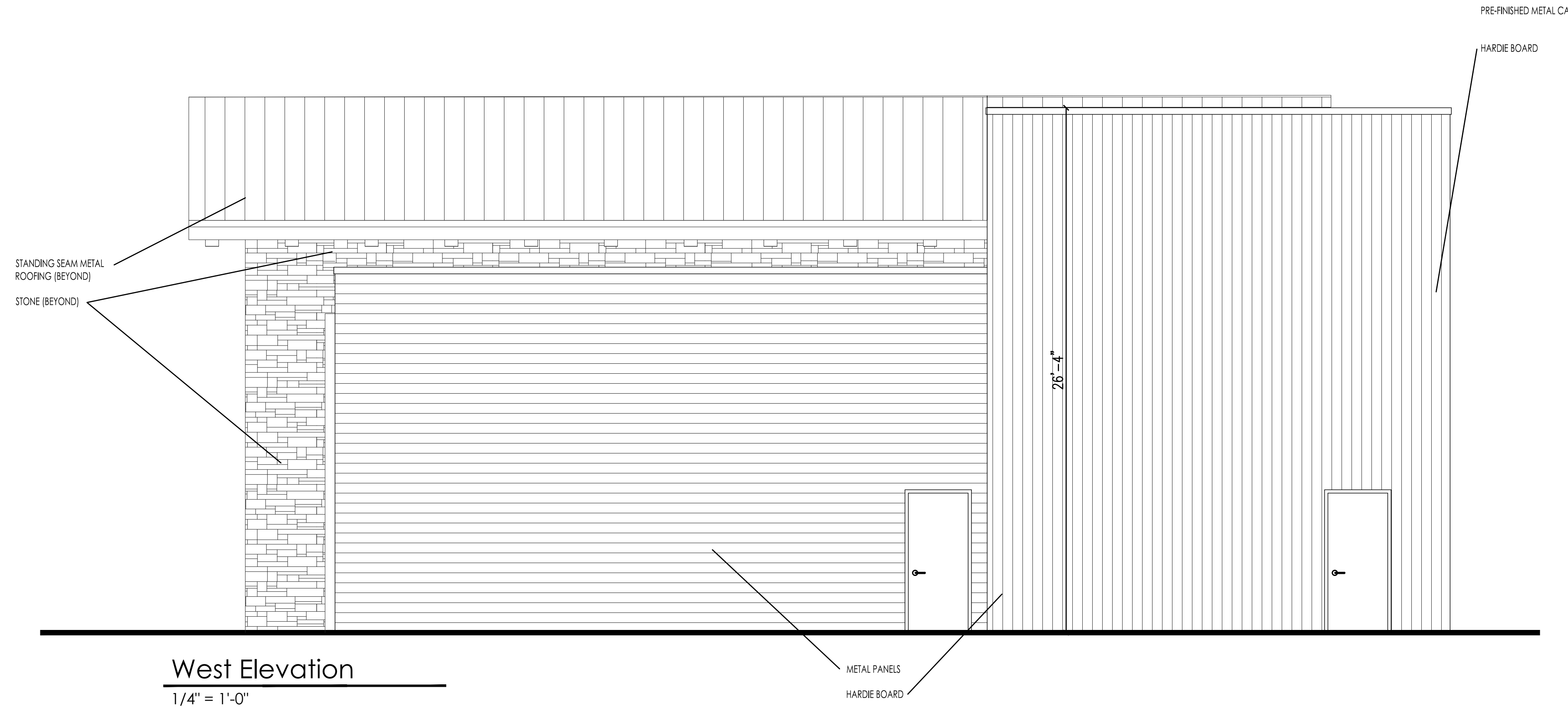


North Elevation
1/4" = 1'-0"

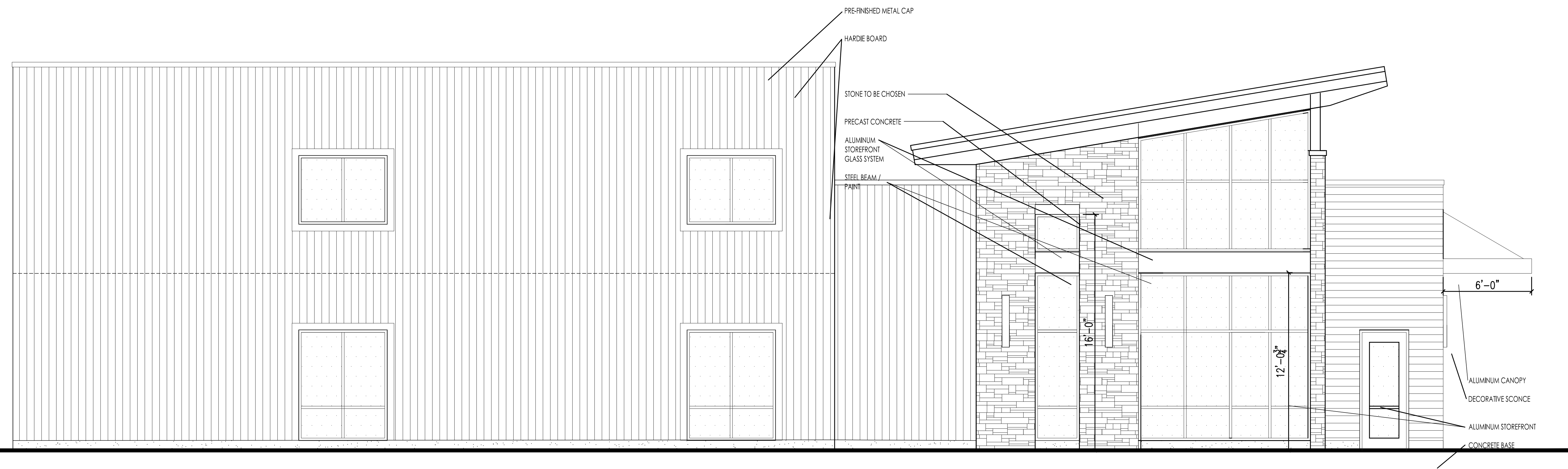


RYAN FREEMAN INC
GENERAL CONTRACTORS

ARCHITECT
LAWRENCE LEE VOWELS ARCHITECTS
C S Q U A R E D



West Elevation
1/4" = 1'-0"



South Elevation
1/4" = 1'-0"

Canales Orthodontics - Alabaster | job no: 32-571 | date: 9-16-2024 | drawn by: lv | checked by: lv | revision: (00) 00-0-2024
Birmingham office | 1000 edley parkway | liberty, alabama 35091 | 2059589888 | lcan@me.com | www.lv.com | ©COPRIGHT | Square Architects - Do not reproduce without written permission!

sheet no:

A-2.2

sheet description: Exterior Elevations