

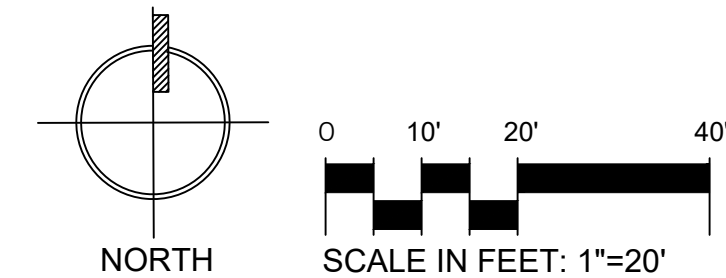
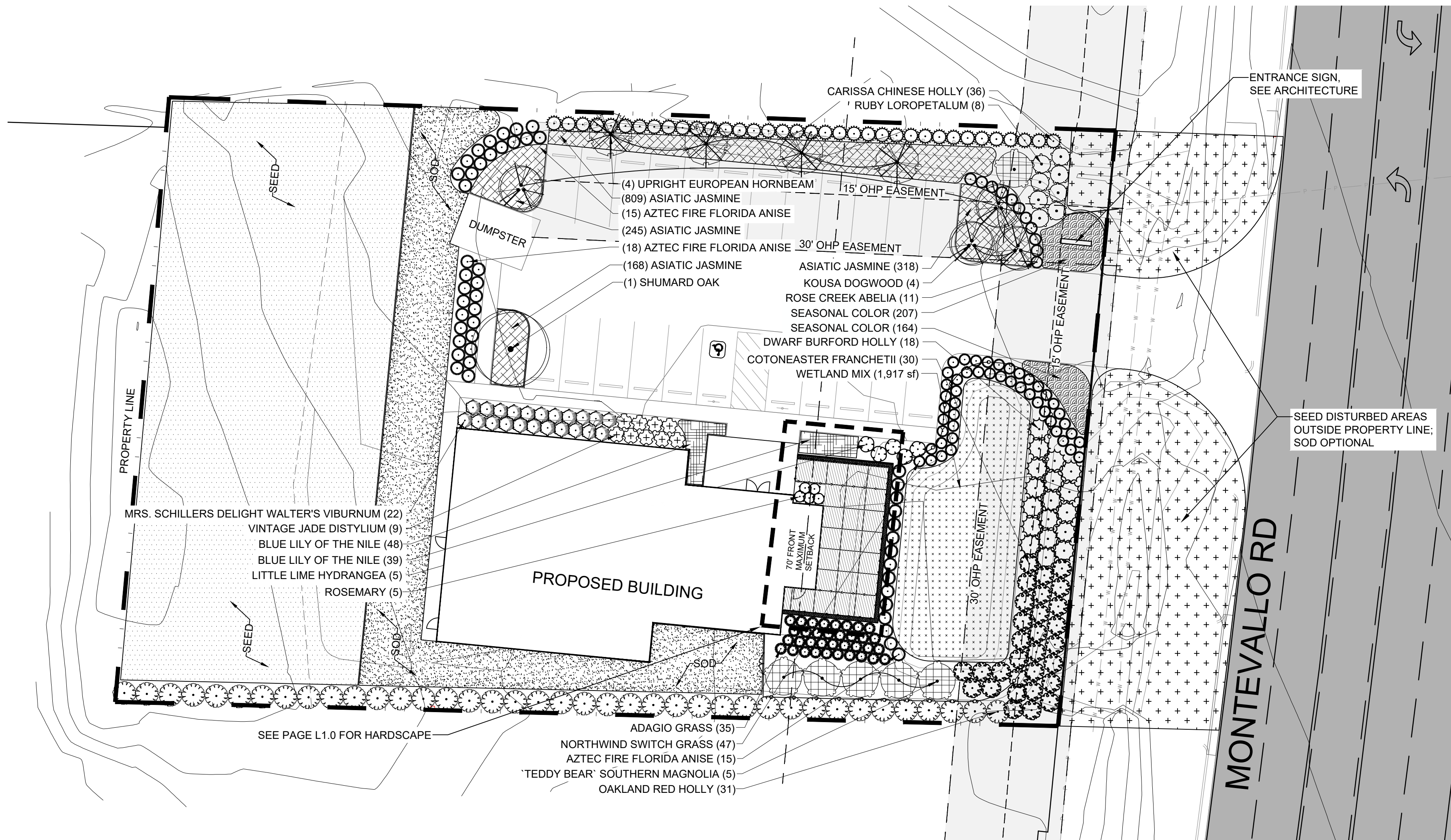
**GENERAL NOTES:**

- CONTRACTOR SHALL BE RESPONSIBLE FOR THE SITE INSPECTION PRIOR TO LANDSCAPE CONSTRUCTION AND INSTALLATION IN ORDER TO ACQUAINT HIMSELF WITH EXISTING CONDITIONS.
- THE LOCATION OF ALL SURFACE AND UNDERGROUND STRUCTURES AND UTILITIES SHALL BE VERIFIED BY THE CONTRACTOR AT GROUND BREAK. THE CONTRACTOR SHALL BE RESPONSIBLE FOR PROTECTING ALL EXISTING STRUCTURES AND UTILITIES TO REMAIN FROM DAMAGE AS REQUIRED DURING CONSTRUCTION AND TO REPAIR ANY DAMAGE WHICH SHOULD OCCUR TO THE SATISFACTION OF THE OWNER/DAMAGED PARTY.
- CONTRACTOR SHALL VERIFY PLANT COUNT FROM PLAN AND REPORT DIFFERENCES PRIOR TO CONSTRUCTION.
- ALL PLANTING AREAS SHALL BE FREE OF OBSTRUCTIONS LARGER THAN 1 1/2" IN SIZE.
- ALL TREES AND SPECIMEN PLANT MATERIAL SHALL BE LOCATED BY THE CONTRACTOR AT APPROVED NURSERIES OR THEIR EQUAL APPROVED PRIOR TO BIDDING.
- ALL PLANT MATERIALS ARE SUBJECT TO APPROVAL OR REFUSAL BY THE LANDSCAPE ARCHITECT AT THE JOB SITE.
- THE LOCATION OF ALL TREES SHALL BE APPROVED BY THE LANDSCAPE ARCHITECT BEFORE THE DIGGING OF PITS. PLANTING SHALL BE LOCATED WHERE SHOWN ON THE DRAWINGS OR WHERE FIELD LOCATED BY LANDSCAPE ARCHITECT.
- THE LOCATION OF ALL PLANTING BEDS SHALL BE APPROVED BY LANDSCAPE ARCHITECT BEFORE THE PREPARATION OF BEDS. PLANTING SHALL BE LOCATED WHERE SHOWN ON THE DRAWINGS OR WHERE FIELD LOCATED BY LANDSCAPE ARCHITECT A MINIMUM 72 HOUR NOTICE SHOULD BE GIVEN AND ANTICIPATED BY THE CONTRACTOR FOR THIS REVIEW.
- MINIMIZE ALL ROOT DISTURBANCE WITHIN THE DRIP LINE OF ALL EXISTING TREES.
- CONTRACTOR SHALL SUPPLY AND SPREAD 6" TOP-SOIL IN SHRUB BEDS AND ALL AREAS TO BE SEEDED UNLESS OTHERWISE NOTED IN SPECIFICATIONS.
- THE LANDSCAPE CONTRACTOR SHALL PROVIDE APPROVED TOPSOIL TO PERFORM INCIDENTAL GRADING WORK.
- CONTRACTOR SHALL BE RESPONSIBLE FOR PROVIDING POSITIVE DRAINAGE IN ALL PLANT AREAS.
- PLANTS SHALL BE WELL FORMED, VIGOROUS, GROWING SPECIMENS WITH GROWTH TYPICAL OF VARIETIES SPECIFIED AND SHALL BE FREE FROM INJURY, INSECTS AND DISEASES. PLANTS SHALL EQUAL OR SURPASS QUALITY AS DEFINED IN THE CURRENT ISSUE OF NURSERY "AMERICAN STANDARDS FOR NURSERY STOCK" AS PUBLISHED BY THE AMERICAN NURSERYMEN, INC.
- ALL PLANT MATERIAL SHALL BE BALLED AND BURLAPPED OR CONTAINER GROWN.
- ALL SHRUBS, TREES AND GROUND COVERS SHALL BE PLANTED WITH A SOIL MIXTURE CONSISTING OF 50% TOPSOIL AND ORGANIC MATERIAL AND PER SPECIFICATIONS.
- FRONT ROW OF SHRUBS SHALL BE PLANTED MINIMUM 24" BEHIND BED LINE @ LAWNS OR WALKS AND MINIMUM 36" BACK OF CURB @ PARKING SPACES.
- BACK ROW OF SHRUB PLANTING SHALL BE PLANTED @ 36" OFF FACE OF BUILDING WALL. GROUND COVERS SHALL BE 12" OUT FROM BUILDING AS REQUIRED BY PLANT SPECIFICATIONS.
- EXCAVATE EDGE OF ALL PLANTING BEDS TO 4" DEPTH TO FORM A NEAT CRISP DEFINITION.
- ALL PLANTING BEDS AND TREE PITS SHALL BE MULCHED WITH A 3" SETTLED LAYER OF PINE STRAW.
- MULCH ALL AREAS OF ANNUALS AND SPREADING GROUND COVER MASS PLANTING WITH 3 INCHES OF DOUBLE HAMMERED BROWN MULCH.
- GRASS: ALL AREAS TO BE GRASSED SHALL BE TILLED AND GRADED TO A DEPTH OF 6". SLAG OF LIME SHALL BE APPLIED AT A RATE OF 100 POUNDS PER 1000 SQ. FT. ADD TURF GREEN OR EQUAL (10-6-8 SLOW RATE) AT A RATE OF 50 POUNDS PER 1000 SQ. FT. SEEDED AREAS SHALL BE COVERED WITH A THIN LAYER OF WHEAT STRAW.
- ALL DISTURBED AREAS NOT PLANTED WITH SHRUBS, TREES, OR SOD SHALL BE SEEDED.
- GRADE ALL AREAS FOR APPROVAL BY LANDSCAPE ARCHITECT BEFORE SODDING.
- SEASONAL COLOR SHALL BE PLANTED IN FLOWERING STATE.
- CONTRACTOR SHALL GUARANTEE ALL PLANT MATERIAL, INCLUDING GRASS FOR ONE FULL YEAR FROM DATE OF SUBSTANTIAL COMPLETION.
- REMOVE ALL GUY WIRES AND STAKES AT END OF GUARANTEE PERIOD.
- WHEN TREES ARE PLANTED THE MONTHS OF MARCH THRU OCTOBER, THE LANDSCAPE CONTRACTOR SHALL AMEND THE SOIL MIX WITH A MOISTURE RETENTION AGENT AS 'TERRA-SORB' OR EQUAL FOR EACH TREE INSTALLATION.

NOTE: ALL TREES AND SHRUBS NOT COVERED BY IRRIGATION TO BE AMENDED WITH TERRA SORB WATER RETAINING AGENT AS PER MANUFACTURERS RECOMMENDATIONS.

**LAYOUT NOTES:**

- THE LOCATION OF ALL SURFACE AND UNDERGROUND STRUCTURES AND UTILITIES SHALL BE VERIFIED BY THE CONTRACTOR AT GROUND BREAK. THE CONTRACTOR SHALL BE RESPONSIBLE FOR PROTECTING ALL EXISTING STRUCTURES AND UTILITIES TO REMAIN FROM DAMAGE AS REQUIRED DURING CONSTRUCTION AND TO REPAIR ANY DAMAGE WHICH SHOULD OCCUR TO THE SATISFACTION OF THE OWNER/DAMAGED PARTY.
- THE FINISHED GRADES SHALL BE FREELY DRAINING.
- ALL SITE ELEMENT LOCATIONS SHALL BE APPROVED BY LANDSCAPE ARCHITECT PRIOR TO EXCAVATION/INSTALLATION.
- IF APPLICABLE, THE LOCATION OF ALL FOOTINGS SHALL BE APPROVED BY THE LANDSCAPE ARCHITECT PRIOR TO EXCAVATION. FOOTINGS SHALL BE LOCATED WHERE SHOWN ON THE DRAWINGS OR WHERE FIELD LOCATED BY LANDSCAPE ARCHITECT.
- THE LOCATION OF ALL PAVED AREAS SHALL BE APPROVED BY THE LANDSCAPE ARCHITECT PRIOR TO EXCAVATION. PAVED AREAS SHALL BE LOCATED WHERE SHOWN ON THE DRAWINGS OR WHERE FIELD LOCATED BY LANDSCAPE ARCHITECT.
- MINIMIZE ALL ROOT DISTURBANCE WITHIN THE DRIP LINE OF ALL EXISTING TREES.
- COORDINATE SLEEVE LOCATION/INSTALLATION WITH LANDSCAPE CONTRACTOR. INSTALLATION IS THE RESPONSIBILITY OF GENERAL CONTRACTOR.
- IRRIGATION SLEEVES ARE TO BE SCHEDULE 40 PVC PIPE, PER SPECIFICATIONS, EXTENDED 18" MINIMUM BEYOND CURB OR PAVEMENT EDGE.
- IRRIGATION SLEEVES ARE TO BE MARKED (EACH END) WITH A 2" X 4" STAKE FOR EASE OF LOCATION BY THE LANDSCAPE CONTRACTOR. SECURE OR CAP EACH END OF SLEEVE DURING INSTALLATION TO PREVENT LOGGING.



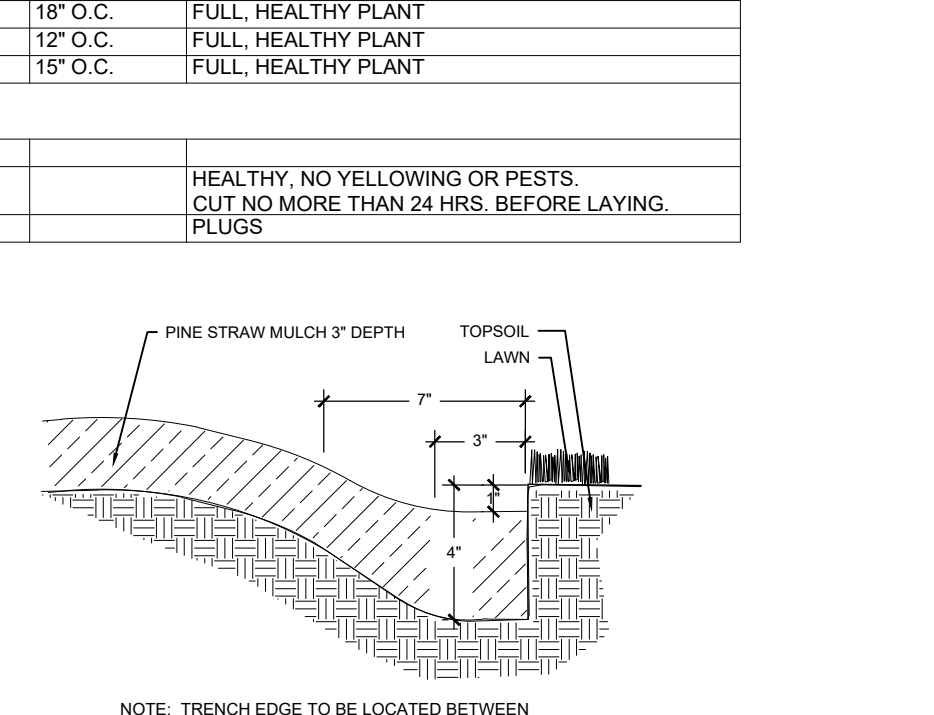
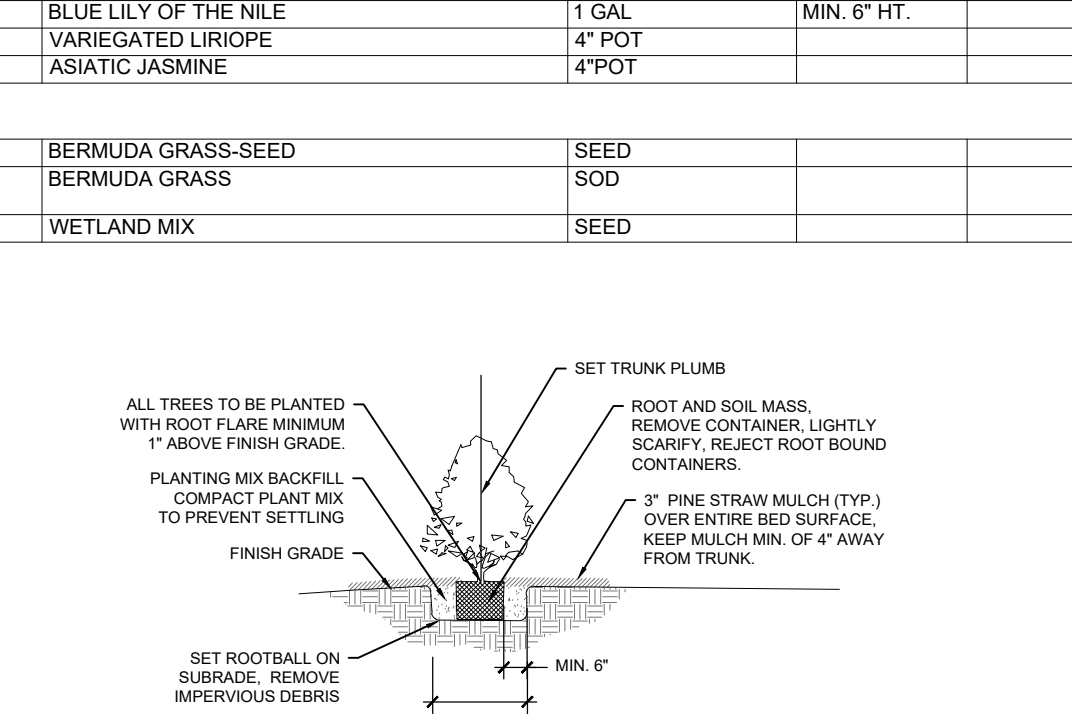
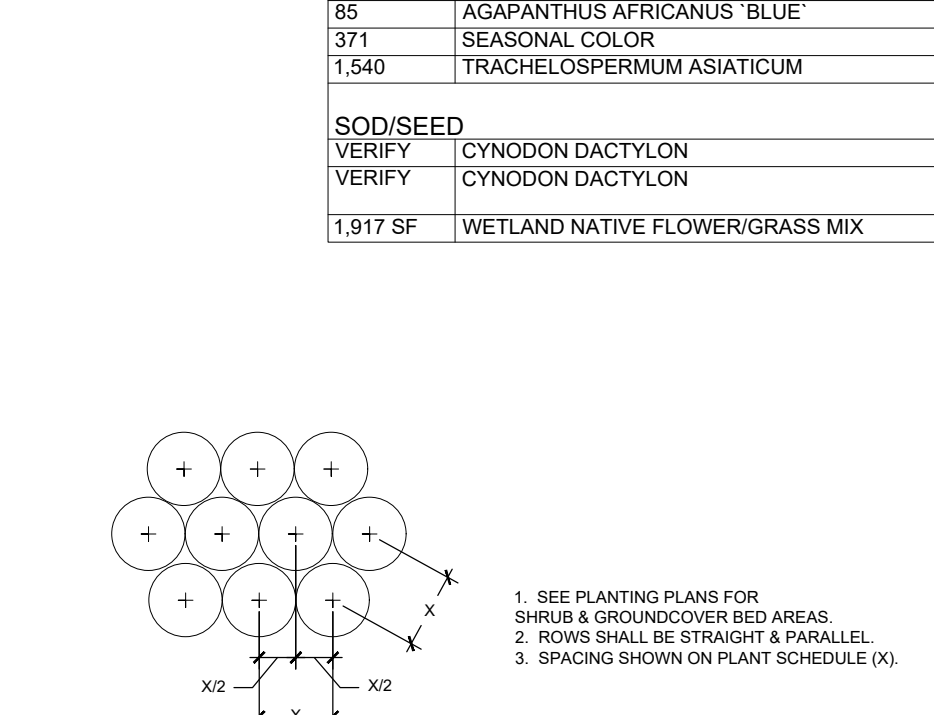
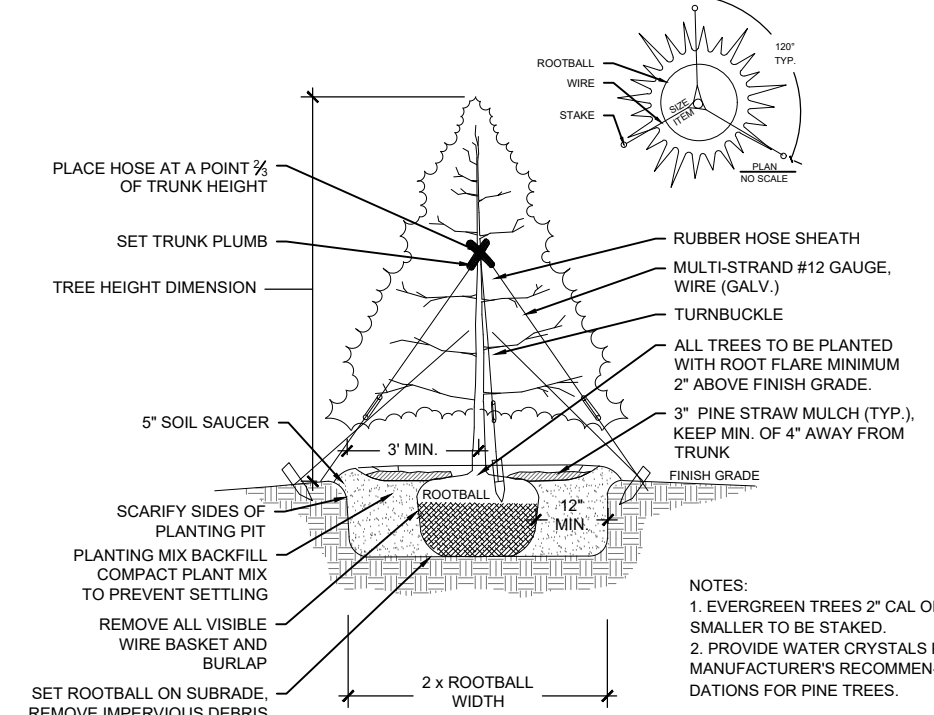
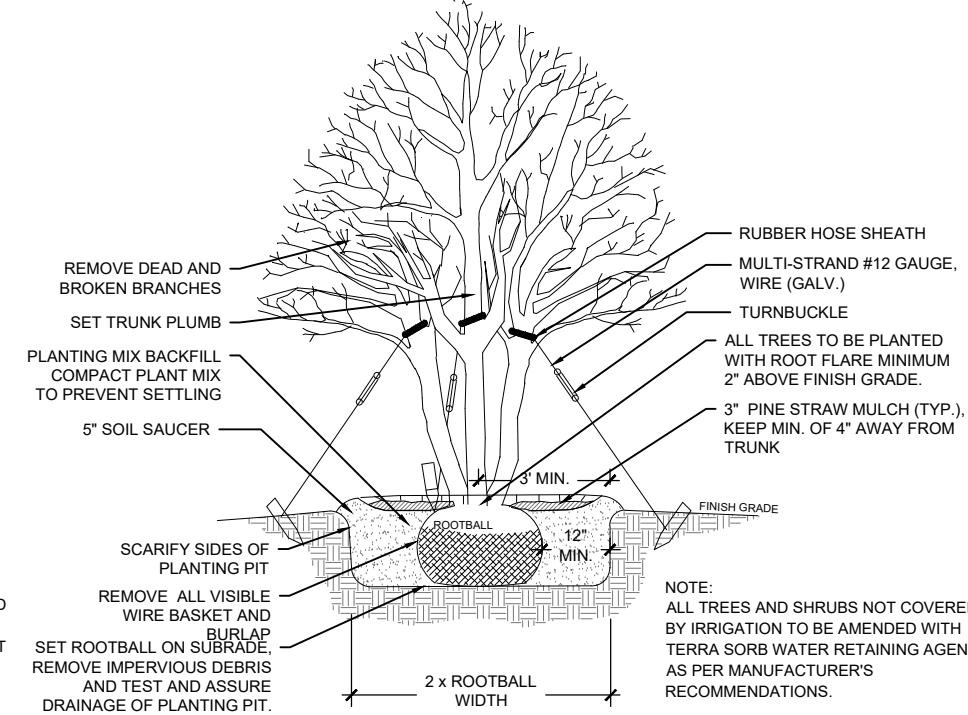
**Alabaster, AL - (R1B) Municipal Code Landscape Calculation**

Chapter 111, Article VIII - Alabaster, Alabama Code of Ordinances  
Perimeter Landscaping Requirements

Required:	Provided:
A landscaped strip at least ten feet wide, which shall not include a sidewalk or trail, shall be located between the vehicular area and the public right-of-way, except where driveways cross the property line. The entire ten-foot-wide strip shall be planted at least one shade tree for every 30 feet of frontage, and supplemented with a double staggered row of shrubs at an equivalent planting of one shrub every 36 inches on center. The shrubs shall be evergreen and a minimum of 30 inches high at the time of installation.	131.9 linear foot of frontage Required: 5 trees Provided: *See Note
A landscaped strip at least five feet wide shall be located along all property lines which separate vehicular areas and drives from adjoining property, except where driveways cross the property line. At least one shade tree for every 30 linear feet of required landscape strip, or portion thereof, shall be planted in the landscaped strip.	108.2 linear foot of frontage Required: 4 trees Provided: *See Note
*Variance requested due to Alabama Power easements located along perimeter of site	

**PLANT SCHEDULE**

QTY	BOTANICAL NAME	COMMON NAME	CAL	HT	SPREAD	SPACING	REMARKS
<b>TREES</b>							
4	CARPINUS BETULUS 'FASTIGIATA'	UPRIGHT EUROPEAN HORNBEAM	2.5' CAL	12' - 14' MIN	2' - 3' MIN.	25' O.C.	STRONG CENTRAL LEADER, HIGH-BRANCHED, HEALTHY
4	CORNUS KOUSA 'MILKY WAY'	KOUSA DOGWOOD	15 GAL	4' - 6' MIN.	3' - 4' MIN.	AS SHOWN	MIN. 3 STEMS, FULL, HEALTHY PLANT
39	ILEX X MAGLAND	OAKLAND RED HOLLY	15 GAL	5' - 6' MIN.	2' - 3' MIN.	6' O.C.	FULL TO GROUND, HEALTHY
6	MAGNOLIA GRANDIFLORA 'SOUTHERN CHARM'	'TEDDY BEAR' SOUTHERN MAGNOLIA	39 GAL	10' - 12' MIN.	5' - 6' MIN.	10' O.C.	FULL TO GROUND, HEALTHY
1	QUERCUS SHUMARDII	SHUMARD OAK	2.5' CAL	12' - 14' MIN	4' - 5' MIN.	N/A	STRONG CENTRAL LEADER
<b>SHRUBS</b>							
11	ABELIA X ROSE CREEK	ROSE CREEK ABELIA	3 GAL	12"-15" MIN.	12"-16" MIN.	36" O.C.	FULL HEALTHY PLANT
30	COTONEASTER FRANCHETII	COTONEASTER FRANCHETII	3 GAL	30" MIN.	60" O.C.	60" O.C.	FULL HEALTHY PLANT
9	DISTYLUM X VINTAGE JADE	VINTAGE JADE DISTYLUM	3 GAL	12"-15" MIN.	12"-16" MIN.	48" O.C.	FULL HEALTHY PLANT
5	HYDRANGEA PANICULATA 'LITTLE LIME'	LITTLE LIME HYDRANGEA	3 GAL	18"-24" MIN.	18"-24" MIN.	48" O.C.	FULL HEALTHY PLANT
18	ILEX CORNUTA 'BURFORDII NANA'	DWARF BURFORD HOLLY	3 GAL	30" MIN.	60" O.C.	60" O.C.	FULL HEALTHY PLANT
36	ILEX CORNUTA 'CARISSA'	CARISSA CHINESE HOLLY	7 GAL	12"-14" MIN.	20"-22" MIN.	42" O.C.	FULL HEALTHY PLANT
48	ILLICIUM FLORIDANUM 'AZTEC FIRE'	AZTEC FIRE FLORIDA ANISE	7 GAL	3' - 4' MIN.	12"-16" MIN.	42" O.C.	FULL HEALTHY PLANT
8	LOROPETALUM CHINENSIS 'RUBY'	RUBY LOROPETALUM	3 GAL	30" MIN.	60" O.C.	60" O.C.	FULL HEALTHY PLANT
35	MISCANTHUS SINENSIS 'ADAGIO'	ADAGIO GRASS	3 GAL	15" - 18" MIN.		36" O.C.	FULL HEALTHY PLANT
47	MUHLENBERGIA CAPILLARIS 'REGAL MIST' TM	PINK MUHLYGRASS	3 GAL	15" - 18" MIN.		36" O.C.	FULL HEALTHY PLANT
5	ROSMARINUS OFFICINALIS 'BLUE SPIRES'	ROSEMARY	3 GAL	12"-15" MIN.	10"-14" MIN.	36" O.C.	FULL HEALTHY PLANT
22	VIBURNUM OBOVATUM 'MRS. SCHILLER'S DELIGHT'	MRS. SCHILLER'S DELIGHT WALTER'S VIBURNUM	3 GAL	48" O.C.		48" O.C.	FULL HEALTHY PLANT
<b>GROUND COVERS</b>							
65	AGAPANTHUS AFRICANUS 'BLUE'	BLUE LILY OF THE NILE	1 GAL	MIN. 6" HT.		18" O.C.	FULL HEALTHY PLANT
371	SEASONAL COLOR	VARIEGATED LIRIOPE	4" POT	12" O.C.		12" O.C.	FULL HEALTHY PLANT
1,540	TRACHELOSPERMUM ASIATICUM	ASIATIC JASMINE	4" POT	15" O.C.		15" O.C.	FULL HEALTHY PLANT
<b>SOD/SEED</b>							
VERIFY	CYNODON DACTYLON	BERMUDA GRASS-SEED	SEED				HEALTHY, NO YELLOWING OR PESTS. CUT NO MORE THAN 24 HRS. BEFORE LAYING. PLUGS
VERIFY	CYNODON DACTYLON	BERMUDA GRASS	SOD				
1,917 SF	WETLAND NATIVE FLOWER/GRASS MIX	WETLAND MIX	SEED				



NOT FOR CONSTRUCTION  
FOR REVIEW

CANALES ORTHODONTICS  
9815 MONTEVALLO RD  
ALABASTER, AL

NO	DATE	DESCRIPTION

**LANDSCAPE PLAN**

JOB NO: CANA-2301  
DATE: 11/14/2024  
DRAWN BY: TJC  
CHECKED BY: AJR  
SHEET NUMBER:

**L2.0**